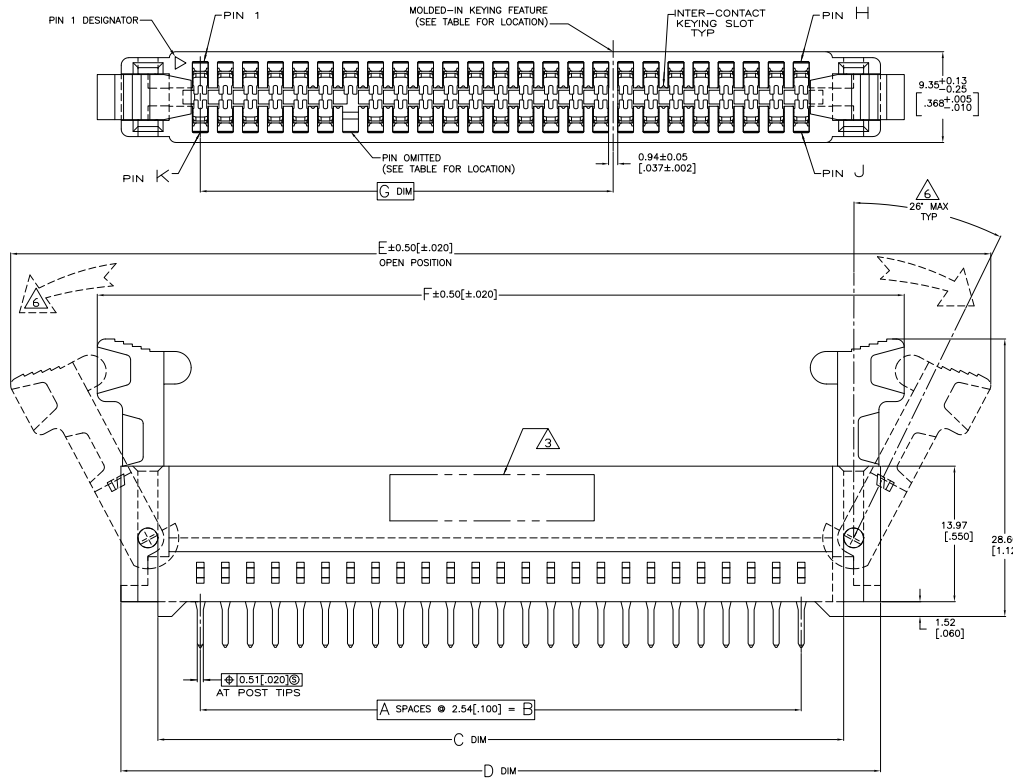
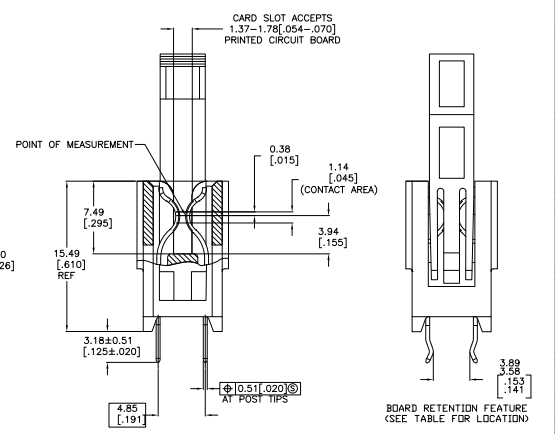


THIS DRAWING IS UNPUBLISHED
 ALL RIGHTS RESERVED
 © 1988 BY TYP ELECTRONICS CORPORATION

REV	DATE	DESCRIPTION	BY	APP
AA	00			
C	82-07-28835			



- MATERIAL:
HOUSING: GLASS FILLED POLYESTER, COLOR: BLACK.
CONTACT: PHOSPHOR BRONZE
LATCH: GLASS FILLED POLYESTER, COLOR: BLACK
- FINISH:
0.00076 [0.00030] MIN GOLD PLATE IN CONTACT AREA,
0.00254 [0.00100] MIN WATTE TIN ON SOLDER POSTS, ALL
OVER 0.00127 [0.00050] MIN NICKEL.
- AMP LOGO, TE PART NUMBER, DATE CODE AND CSA LOGO INK
STAMPED WHITE (HOT STAMPED OR LAZER PRINTED) IN THE APPROXIMATE
AREA SHOWN, EITHER SIDE PERMISSABLE, WHEN HOUSING SIZE PERMITS
- DATUMS AND BASIC DIMENSIONS ESTABLISHED BY CUSTOMER
- CONNECTORS SHOWN ARE USED IN APPLICATIONS WITH VRM MODULES WEIGHING
3 OUNCES OR LESS. ALTERNATE CONNECTOR AND LATCH METHOD IS AVAILABLE FOR
VRM MODULES WEIGHING UP TO 6 OUNCES.
- CAUTION: LATCHES ARE INTENDED FOR RETENTION OF PC BOARD TO CONNECTOR.
DO NOT ATTEMPT TO FULLY EJECT PC BOARD FROM CONNECTOR WHILE DISENGAGING
LATCHES. DAMAGE TO LATCHES AND/OR CONNECTOR MAY OCCUR.



OBsolete	5145432-7
OBsolete	5145432-6
OBsolete	5145432-4
OBsolete	5145432-3
	PART NUMBER

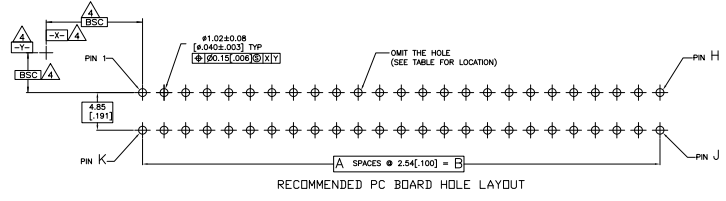
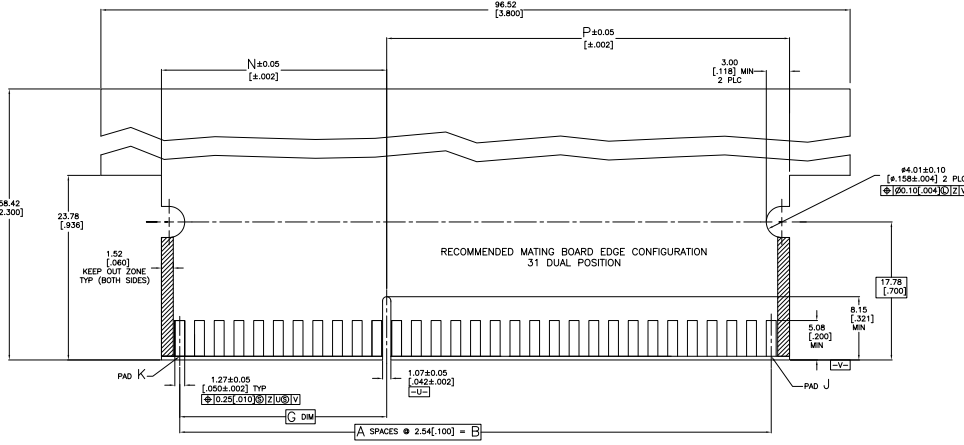
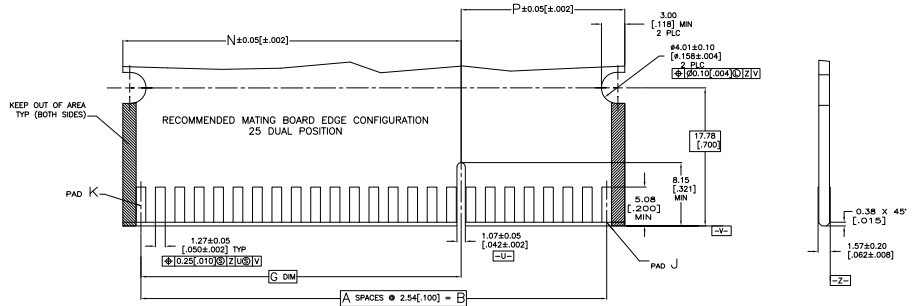
2, 3, 23, 24, 27, 28, 48, 49	21 & 22	44	11.25 [0.443]	54.43 [2.143]	50	26	25	52.07 [2.050]	79.60 [3.130]	97.10 [3.820]	74.78 [2.944]	67.28 [2.649]	60.96 [2.400]	24	25	5145432-8
2, 3, 29, 30, 33, 34, 60, 61	7 & 8	6	62.05 [2.443]	18.87 [0.743]	62	32	31	16.51 [0.650]	94.80 [3.730]	112.40 [4.420]	90.02 [3.544]	82.52 [3.249]	76.20 [3.000]	30	31	5145432-5
2, 3, 23, 24, 27, 28, 48, 49	17 & 18	44	21.41 [0.843]	44.27 [1.743]	50	26	25	41.91 [1.650]	79.60 [3.130]	97.10 [3.820]	74.78 [2.944]	67.28 [2.649]	60.96 [2.400]	24	25	5145432-2
RETENTION FEATURE LOCATION	MOLDED-IN KEYING FEATURE BETWEEN	OMITTED PIN & HOLE	P	N	K	J	H	G	F	E	D	C	B	A	NO. OF DUAL POSN	PART NUMBER

THIS DRAWING IS A CONTROLLED DOCUMENT. **REV. A** LAMINATE. **REV. B** STANDARD. **REV. C** CUSTOMER DRAWING.

DATE: 108-9039
 DRAWN BY: 114-13018
 CHECKED BY: A1 00779
 CUSTOMER DRAWING: 5145432

THIS DRAWING IS A CONTROLLED DOCUMENT. **REV. A** LAMINATE. **REV. B** STANDARD. **REV. C** CUSTOMER DRAWING.

DATE: 108-9039
 DRAWN BY: 114-13018
 CHECKED BY: A1 00779
 CUSTOMER DRAWING: 5145432



THIS DRAWING IS A CONTROLLED DOCUMENT.		REV. A. J. MAYER	DATE 10/18/88	BY T. J. BENTLEY	DATE 10/18/88	APP'D	DATE 10/18/88	BY	DATE 10/18/88
DIMENSIONS IN INCHES		108-9039		114-13018		A1		00779	
DRAWING NO.		108-9039		114-13018		A1		00779	
REVISED BY		T. J. BENTLEY		T. J. BENTLEY		T. J. BENTLEY		T. J. BENTLEY	
REVISED DATE		10/18/88		10/18/88		10/18/88		10/18/88	
REVISED DESCRIPTION		CONNECTOR ASSEMBLY, STANDARD EDGE I, DUAL POSITION, 2.54[100] CENTERLINE		CONNECTOR ASSEMBLY, STANDARD EDGE I, DUAL POSITION, 2.54[100] CENTERLINE		CONNECTOR ASSEMBLY, STANDARD EDGE I, DUAL POSITION, 2.54[100] CENTERLINE		CONNECTOR ASSEMBLY, STANDARD EDGE I, DUAL POSITION, 2.54[100] CENTERLINE	
REVISED BY		T. J. BENTLEY		T. J. BENTLEY		T. J. BENTLEY		T. J. BENTLEY	
REVISED DATE		10/18/88		10/18/88		10/18/88		10/18/88	
REVISED DESCRIPTION		CONNECTOR ASSEMBLY, STANDARD EDGE I, DUAL POSITION, 2.54[100] CENTERLINE		CONNECTOR ASSEMBLY, STANDARD EDGE I, DUAL POSITION, 2.54[100] CENTERLINE		CONNECTOR ASSEMBLY, STANDARD EDGE I, DUAL POSITION, 2.54[100] CENTERLINE		CONNECTOR ASSEMBLY, STANDARD EDGE I, DUAL POSITION, 2.54[100] CENTERLINE	
REVISED BY		T. J. BENTLEY		T. J. BENTLEY		T. J. BENTLEY		T. J. BENTLEY	
REVISED DATE		10/18/88		10/18/88		10/18/88		10/18/88	
REVISED DESCRIPTION		CONNECTOR ASSEMBLY, STANDARD EDGE I, DUAL POSITION, 2.54[100] CENTERLINE		CONNECTOR ASSEMBLY, STANDARD EDGE I, DUAL POSITION, 2.54[100] CENTERLINE		CONNECTOR ASSEMBLY, STANDARD EDGE I, DUAL POSITION, 2.54[100] CENTERLINE		CONNECTOR ASSEMBLY, STANDARD EDGE I, DUAL POSITION, 2.54[100] CENTERLINE	