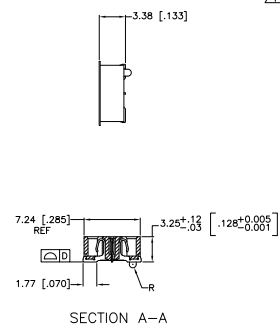
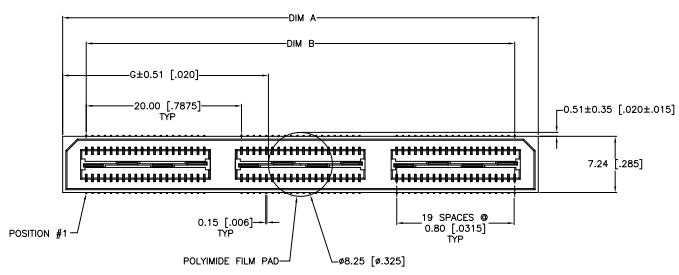


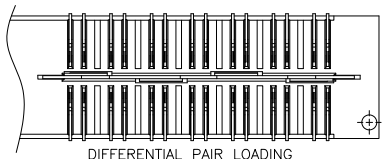
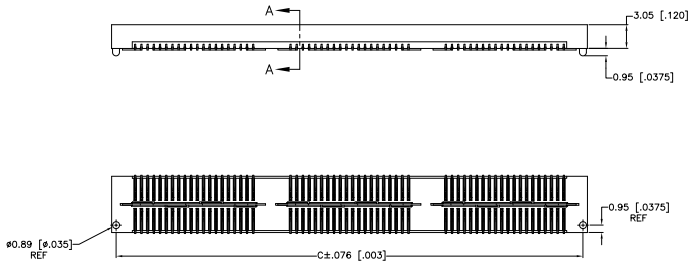
THIS DRAWING IS UNCLASSIFIED  
 UNLESS INDICATED OTHERWISE  
 ALL RIGHTS RESERVED

REV	DATE	DESCRIPTION	BY	CHK	APP
AD	00				
M2		REVISED PER ECU-11-004835			

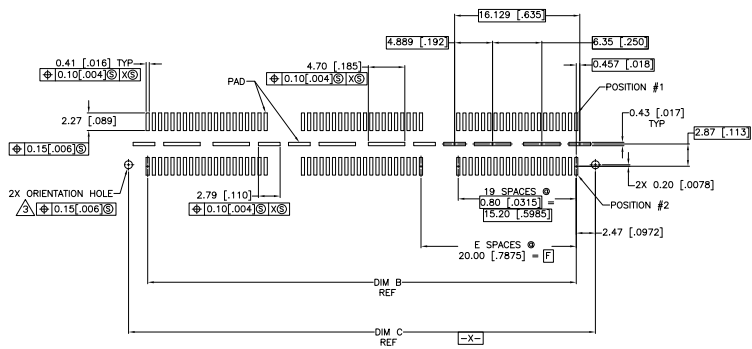
- △ HOUSING: LEP. BLACK.
- △ CONTACT & GROUND PLANE: PHOS BRONZE.
- △ CONTACT PLATING: SELECT 0.25 MICROMETERS (.00010 IN) MIN. GOLD.
- △ FOR STANDARD APPLICATIONS, ORIENTATION HOLE TO BE #1.02 [#0.400].
- △ OBSOLETE PARTS: OBSOLETE CIS STREAMLINING PER D.RENAUD/D.SINISI



SECTION A-A



DIFFERENTIAL PAIR LOADING (BOTTOM VIEW) SCALE 2:1



RECOMMENDED PC BOARD LAYOUT VIEWED FROM CONNECTOR SIDE

QTY	DESCRIPTION	UNIT	REV	DATE	BY	CHK	APP	REVISIONS
25 521 (044)	40 001 (575)	2	0.152 (0060)	80 132 (505)	95 202 (173)	61 282 (412)	YES	POCKET TAPE YES 84 1-1658012-2
18 511 (650)	20 000 (7874)	1	0.102 (0040)	40 131 (580)	35 201 (386)	41 281 (625)	YES	POCKET TAPE YES 56 7-1658012-2
6 521 (257)	0 (000)	0	0.102 (0040)	20 131 (793)	15 201 (988)	21 281 (838)	YES	POCKET TAPE YES 38 7-1658012-1
25 521 (044)	40 001 (575)	2	0.152 (0060)	80 132 (505)	95 202 (173)	61 282 (412)	YES	POCKET TAPE NO 120 6-1658012-2
18 511 (650)	20 000 (7874)	1	0.102 (0040)	40 131 (580)	35 201 (386)	41 281 (625)	YES	POCKET TAPE NO 80 6-1658012-2
6 521 (257)	0 (000)	0	0.102 (0040)	20 131 (793)	15 201 (988)	21 281 (838)	YES	POCKET TAPE NO 40 6-1658012-1
-	40 001 (575)	2	0.152 (0060)	80 132 (505)	95 202 (173)	61 282 (412)	NO	POCKET TAPE YES 84 5-1658012-3
-	20 000 (7874)	1	0.102 (0040)	40 131 (580)	35 201 (386)	41 281 (625)	NO	POCKET TAPE YES 56 5-1658012-2
-	40 001 (575)	2	0.152 (0060)	80 132 (505)	95 202 (173)	61 282 (412)	NO	POCKET TAPE NO 120 4-1658012-2
-	20 000 (7874)	1	0.102 (0040)	40 131 (580)	35 201 (386)	41 281 (625)	NO	POCKET TAPE NO 80 4-1658012-2
-	0 (000)	0	0.102 (0040)	20 131 (793)	15 201 (988)	21 281 (838)	NO	POCKET TAPE NO 40 4-1658012-1
46 531 (832)	80 003 (150)	4	0.152 (0060)	100 143 (643)	95 203 (748)	101 303 (588)	YES	TRAY YES 140 3-1658012-3
35 521 (438)	80 002 (362)	3	0.152 (0060)	80 143 (55)	75 202 (611)	81 283 (200)	YES	TRAY YES 112 3-1658012-3
25 521 (044)	40 001 (575)	2	0.152 (0060)	80 132 (505)	95 202 (173)	61 282 (412)	YES	TRAY YES 58 3-1658012-3
18 511 (650)	20 000 (7874)	1	0.102 (0040)	40 131 (580)	35 201 (386)	41 281 (625)	YES	TRAY YES 28 3-1658012-2
6 521 (257)	0 (000)	0	0.102 (0040)	20 131 (793)	15 201 (988)	21 281 (838)	YES	TRAY YES 28 3-1658012-1
46 531 (832)	80 003 (150)	4	0.152 (0060)	100 143 (643)	95 203 (748)	101 303 (588)	YES	TRAY NO 200 2-1658012-5
35 521 (438)	80 002 (362)	3	0.152 (0060)	80 143 (55)	75 202 (611)	81 283 (200)	YES	TRAY NO 160 2-1658012-4
25 521 (044)	40 001 (575)	2	0.152 (0060)	80 132 (505)	95 202 (173)	61 282 (412)	YES	TRAY NO 120 2-1658012-3
18 511 (650)	20 000 (7874)	1	0.102 (0040)	40 131 (580)	35 201 (386)	41 281 (625)	YES	TRAY NO 80 2-1658012-2
6 521 (257)	0 (000)	0	0.102 (0040)	20 131 (793)	15 201 (988)	21 281 (838)	YES	TRAY NO 40 2-1658012-1
-	80 002 (362)	3	0.152 (0060)	80 143 (55)	75 202 (611)	81 283 (200)	NO	TRAY YES 112 1-1658012-4
-	40 001 (575)	2	0.152 (0060)	80 132 (505)	95 202 (173)	61 282 (412)	NO	TRAY YES 84 1-1658012-3
-	20 000 (7874)	1	0.102 (0040)	40 131 (580)	35 201 (386)	41 281 (625)	NO	TRAY YES 56 1-1658012-2
-	0 (000)	0	0.102 (0040)	20 131 (793)	15 201 (988)	21 281 (838)	NO	TRAY YES 28 1-1658012-1
-	80 003 (150)	4	0.152 (0060)	100 143 (643)	95 203 (748)	101 303 (588)	NO	TRAY NO 200 1658012-5
-	80 002 (362)	3	0.152 (0060)	80 143 (55)	75 202 (611)	81 283 (200)	NO	TRAY NO 160 1658012-4
-	40 001 (575)	2	0.152 (0060)	80 132 (505)	95 202 (173)	61 282 (412)	NO	TRAY NO 120 1658012-3
-	20 000 (7874)	1	0.102 (0040)	40 131 (580)	35 201 (386)	41 281 (625)	NO	TRAY NO 80 1658012-2
-	0 (000)	0	0.102 (0040)	20 131 (793)	15 201 (988)	21 281 (838)	NO	TRAY NO 40 1658012-1

THIS DRAWING IS A CONTROLLED DOCUMENT. THE MASTER COPY IS KEPT IN THE DESIGN DEPARTMENT. ANY CHANGES TO THIS DRAWING MUST BE APPROVED BY THE DESIGN DEPARTMENT AND THE MANUFACTURING DEPARTMENT. THE MANUFACTURING DEPARTMENT IS RESPONSIBLE FOR THE PRODUCTION OF THIS DRAWING.

RECEPTACLE ASSEMBLY, VERTICAL 0.80MM CL.

SIZE: 4.1 (1) 1 (1) M2

CUSTOMER DRAWING: A100779 (1658012)