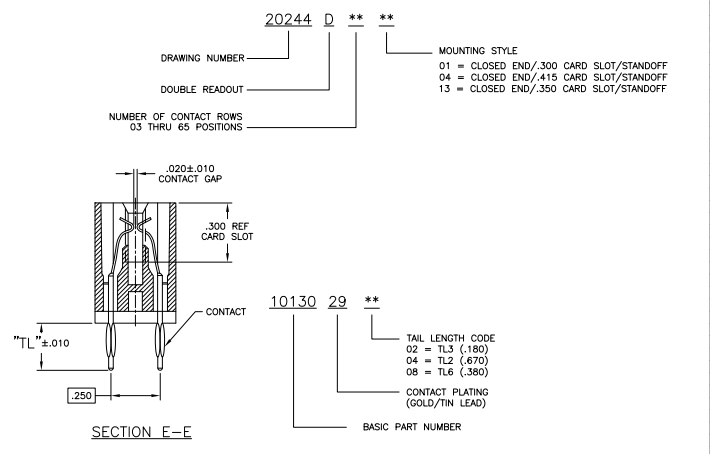
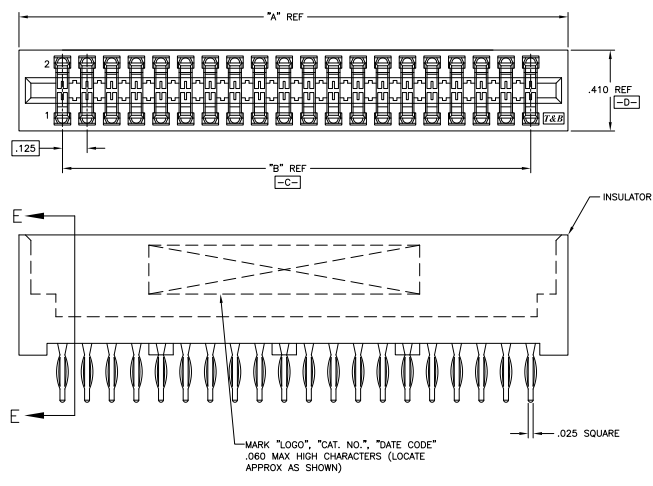
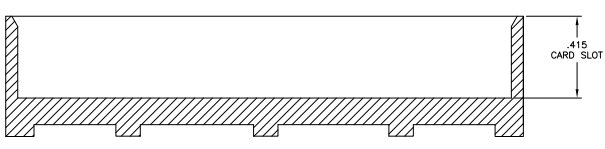


REV	DATE	DESCRIPTION	BY	CHK
A	5/13/99		SS	MM
A1	REVISED PER ECO-09-024027		1040699	KKK AEG

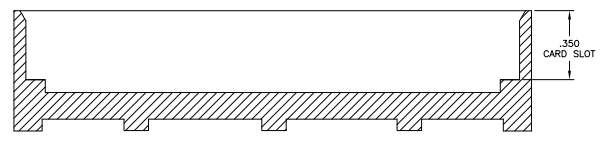
1 INTERPRET GEOMETRIC CHARACTERISTIC SYMBOLS PER STANDARD ANSI Y14.5M (1982).
 △ OBSOLETE PARTS: OBSOLETE CIS STREAMLINING PER D.RENAUD/D.SINISI



MOUNTING STYLE "01", 20 POSITION ILLUSTRATED
 (ADDITIONAL MOUNTING STYLES AS SHOWN)

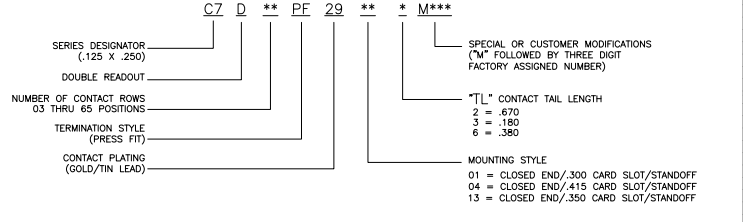


MOUNTING STYLE "04"

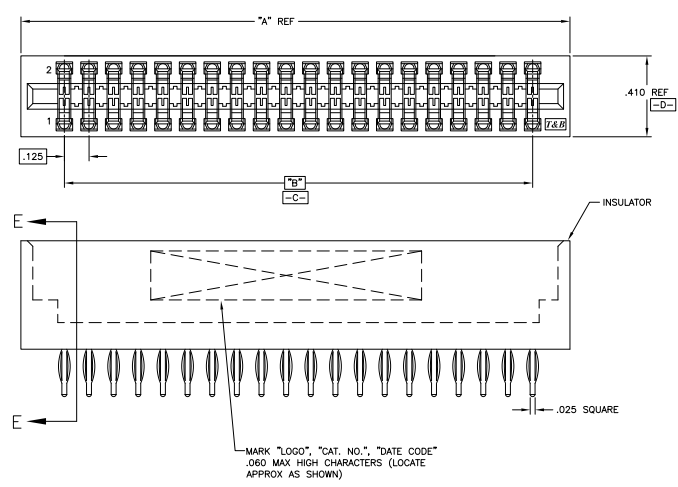


MOUNTING STYLE "13"

CATALOG NUMBER CODE DESCRIPTION

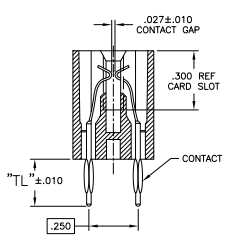


THIS DRAWING IS A CONTROLLED DOCUMENT.		DATE: 5/13/99	BY: SS	CHK: MM
DRAWN BY: MICHAEL		DATE: 5/13/99	BY: MICHAEL	CHK: MICHAEL
CHECKED BY: MICHAEL		DATE: 5/13/99	BY: MICHAEL	CHK: MICHAEL
APPROVED BY: MICHAEL		DATE: 5/13/99	BY: MICHAEL	CHK: MICHAEL
CUSTOMER DRAWING		DATE: 4-1	REV: 1	BY: A1



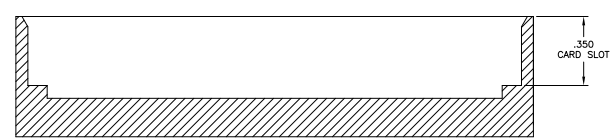
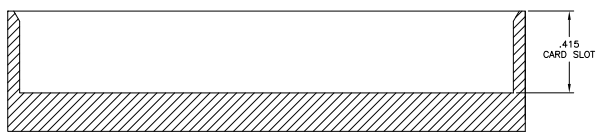
20244 D ** **
 DRAWING NUMBER
 DOUBLE READOUT
 NUMBER OF CONTACT ROWS
 03 THRU 65 POSITIONS

MOUNTING STYLE
 02 = CLOSED END/415 CARD SLOT/NO STANDOFF
 03 = CLOSED END/300 CARD SLOT/NO STANDOFF
 14 = CLOSED END/350 CARD SLOT/NO STANDOFF



10130 29 **
 TAIL LENGTH CODE
 01 = TL3 (.180)
 03 = TL2 (.670)
 07 = TL6 (.380)
 CONTACT PLATING
 (GOLD/TIN LEAD)
 BASIC PART NUMBER

MOUNTING STYLE "03", 20 POSITION ILLUSTRATED
 (ADDITIONAL MOUNTING STYLES AS SHOWN)



CATALOG NUMBER CODE DESCRIPTION
 C7 D ** PF 29 ** * M***

SERIES DESIGNATOR (125 X .250)
 DOUBLE READOUT
 NUMBER OF CONTACT ROWS 03 THRU 65 POSITIONS
 TERMINATION STYLE (PRESS FIT)
 CONTACT PLATING (GOLD/TIN LEAD)

SPECIAL OR CUSTOMER MODIFICATIONS ("M" FOLLOWED BY THREE DIGIT FACTORY ASSIGNED NUMBER)
 "TL" CONTACT TAIL LENGTH
 2 = .670
 3 = .180
 6 = .380

MOUNTING STYLE
 02 = CLOSED END/415 CARD SLOT/NO STANDOFF
 03 = CLOSED END/300 CARD SLOT/NO STANDOFF
 14 = CLOSED END/350 CARD SLOT/NO STANDOFF

THIS DRAWING IS A CONTROLLED DOCUMENT.		DATE: 07/80	BY: MICHAEL	APP'D: MICHAEL	DATE: 07/80	BY: MICHAEL	APP'D: MICHAEL
DESIGNED BY: MICHAEL	DRAWN BY: MICHAEL	CHECKED BY: MICHAEL	DATE: 07/80	DATE: 07/80	DATE: 07/80	DATE: 07/80	DATE: 07/80
TWO ELECTRONICS CORPORATION HARRISBURG, PA 17105-3608				CONN ASSY, CARD EDGE, PRESS FIT (C7 SERIES, .125 X .250)			
SIZE: A1	DATE: 07/80	DRAWING NO: 100779	REV: 1	REV: 2	REV: 3	REV: 4	REV: 5
CUSTOMER DRAWING		DATE: 4.1		REV: 2		REV: 3	

THIS DRAWING IS UNPUBLISHED
 ALL INFORMATION HEREIN IS UNCLASSIFIED
 EXCEPT WHERE SHOWN OTHERWISE

REV	DATE	BY	DESCRIPTION	DATE	BY	APP
1			SEE SHEET 1			

NUMBER OF CONTACT ROWS	NUMBER OF CONTACTS	DIM ("A")	DIM ("B")
65	130	8.410	8.000
64	128	8.285	7.875
63	126	8.160	7.750
62	124	8.035	7.625
61	122	7.910	7.500
60	120	7.785	7.375
59	118	7.660	7.250
58	116	7.535	7.125
57	114	7.410	7.000
56	112	7.285	6.875
55	110	7.160	6.750
54	108	7.035	6.625
53	106	6.910	6.500
52	104	6.785	6.375
51	102	6.660	6.250
50	100	6.535	6.125
49	98	6.410	6.000
48	96	6.285	5.875
47	94	6.160	5.750
46	92	6.035	5.625
45	90	5.910	5.500
44	88	5.785	5.375
43	86	5.660	5.250
42	84	5.535	5.125
41	82	5.410	5.000
40	80	5.285	4.875
39	78	5.160	4.750
38	76	5.035	4.625
37	74	4.910	4.500
36	72	4.785	4.375
35	70	4.660	4.250

NUMBER OF CONTACT ROWS	NUMBER OF CONTACTS	DIM ("A")	DIM ("B")
34	68	4.535	4.125
33	66	4.410	4.000
32	64	4.285	3.875
31	62	4.160	3.750
30	60	4.035	3.625
29	58	3.910	3.500
28	56	3.785	3.375
27	54	3.660	3.250
26	52	3.535	3.125
25	50	3.410	3.000
24	48	3.285	2.875
23	46	3.160	2.750
22	44	3.035	2.625
21	42	2.910	2.500
20	40	2.785	2.375
19	38	2.660	2.250
18	36	2.535	2.125
17	34	2.410	2.000
16	32	2.285	1.875
15	30	2.160	1.750
14	28	2.035	1.625
13	26	1.910	1.500
12	24	1.785	1.375
11	22	1.660	1.250
10	20	1.535	1.125
09	18	1.410	1.000
08	16	1.285	.875
07	14	1.160	.750
06	12	1.035	.625
05	10	.910	.500
04	8	.785	.375
03	6	.660	.250

QTY	CONTACT P/N	HOUSING P/N (QTY=1)	DESCRIPTION	TE	PART NO
100	1437263-1	3-1454282-9	C7D50PF29023	6-1437263-0	
100	1437263-1	3-1454282-2	C7D50PF29143	5-1437263-7	
100	1437263-2	1437263-3	C7D50PF29013	5-1437263-2	
86	1437263-2	3-1454282-1	C7D43PF29013	5-1437263-0	
80	1437263-2	2-1454282-9	C7D40PF29043	4-1437263-8	
80	1454243-3	3-1454282-6	C7D40PF29032	4-1437263-7	
80	1437263-1	4-1454282-1	C7D40PF29023	4-1437263-6	
80	1437263-2	2-1454282-8	C7D40PF29013	4-1437263-5	
80	1454243-4	2-1454282-8	C7D40PF29012	4-1437263-4	
72	1437263-1	4-1454282-0	C7D36PF29143	6-1437263-1	
72	1437263-1	2-1454282-7	C7D36PF29033	4-1437263-3	
72	1437263-2	2-1454282-6	C7D36PF29013	4-1437263-2	
72	1454243-4	2-1454282-6	C7D36PF29012	4-1437263-1	
70	1437263-2	2-1454282-5	C7D35PF29013	4-1437263-0	
70	1454243-4	2-1454282-5	C7D35PF29012	3-1437263-9	
60	1454243-3	3-1454282-7	C7D30PF29032	2-1437274-7	
60	1437263-2	2-1454282-1	C7D30PF29043	3-1437263-3	
60	1437263-1	2-1454282-0	C7D30PF29023	3-1437263-2	
60	1437263-2	1-1454282-9	C7D30PF29013	3-1437263-1	
56	1454243-3	3-1454282-5	C7D28PF29032	2-1437274-3	
56	1454244-2	1-1454282-5	C7D28PF49013	3-1437263-0	
56	1437263-1	1-1454282-8	C7D28PF29023	2-1437263-9	
56	1437263-2	1-1454282-7	C7D28PF29013	2-1437263-8	
56	1454243-4	1-1454282-7	C7D28PF29012	2-1437263-7	
56	1454243-7	1-1454282-6	C7D27PF29026	2-1437263-6	
54	1454243-3	1-1454282-6	C7D27PF29022	2-1437263-5	
44	1437263-1	1-1454282-5	C7D22PF29023	2-1437263-4	
44	1437263-2	1-1454282-4	C7D22PF29013	2-1437263-3	
40	1437263-1	1-1454282-2	C7D20PF29023	2-1437263-1	
40	1437263-2	1-1454282-1	C7D20PF29013	2-1437263-0	
40	1437263-2	1-1454282-1	C7D20PF29012	1-1437263-9	
36	1437263-2	1-1454282-0	C7D18PF29043	1-1437263-8	
36	1454263-1	1454282-9	C7D18PF29023	1-1437263-7	
36	1454243-3	1454282-9	C7D18PF29022	1-1437263-6	
36	1437263-2	1454282-8	C7D18PF29013	1-1437263-5	
36	1454243-4	1454282-8	C7D18PF29012	1-1437263-4	
32	1437263-1	1454282-7	C7D16PF29043	1-1437263-3	
32	1437263-1	1454282-6	C7D16PF29023	1-1437263-2	
22	1437263-1	1454282-4	C7D11PF29023	1-1437263-1	
12	1437263-2	1454282-3	C7D06PF29053	1437263-9	
12	1437263-2	1454282-2	C7D06PF29043	1437263-8	
12	1437263-1	1454282-1	C7D06PF29023	1437263-7	

THIS DRAWING IS A CONTROLLED DOCUMENT. **THE SCHUEBLER GROUP** Harrisburg, PA 17105-3608

DESIGNED BY: MICHAEL WELLS
 DRAWN BY: MICHAEL WELLS
 CHECKED BY: MICHAEL WELLS
 APPROVED BY: MICHAEL WELLS

DATE: 00779
 SIZE: 3 x 3
 SHEET: 1

DESCRIPTION: CONN ASSY, CARD EDGE, PRESS FIT (C7 SERIES, .125 X .250)

CUSTOMER DRAWING: 1437263-7