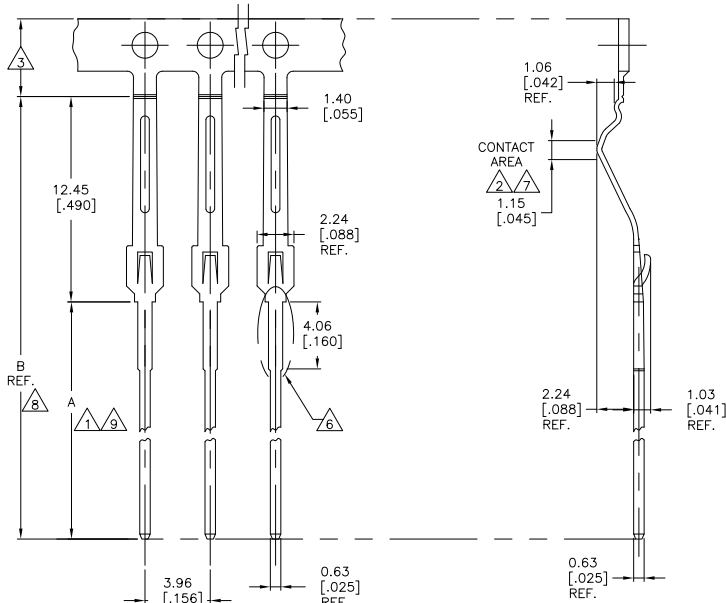


THIS DRAWING IS UNPUBLISHED. RELEASED FOR PUBLICATION.  
 © COPYRIGHT BY TYCO ELECTRONICS CORPORATION. ALL RIGHTS RESERVED.

LOC	DIST	REVISIONS					
AD	14	F	LNK	DESCRIPTION	DATE	BY	APPD
		K		REVISED PER EC 063C-0205-05	06MAR06	GS	MM
		K1		REVISED PER ECO-09-020932	01SEP09	KK	AEQ

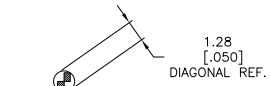


- 1 GOLD PLATE PER MIL-0-45204 .000001 MIN. THK. OVER NICKEL PLATE.
- 2 GOLD PLATE PER MIL-G-45204 .000015 MIN. THK. OVER NICKEL PLATE.
- 3 PLATING IS NOT RREQUIRED ON CARRIER STRIP.
- 4 POST DIAGONAL .0310/.0350 AFTER PLATING
- 5 QUANTITY PER REEL-25,000
- 6 ACTION PIN AREA.
- 7 GOLD PL. PER MIL-G-45204 .000030 MIN. THK. OVER NICKEL PL.
- 8 GOLD PL. PER QQ-N-290 .000050 MIN. THK.
- 9 SOLDER PL. .000100 MIN. THK. OVER NICKEL PL.
- 10 MATTE TIN PL. .000100 MIN. THK. OVER NICKEL PL.
- 11 OBSOLETE PARTS: OBSOLETE CIS STREAMLINING PER D.RENAUD/D.SINISI

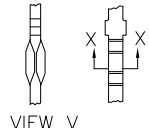
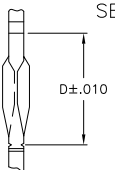
OBSOLETE

COMB NO.	DETAIL C(D)	FINISH	B	A	PART NO.
119328	-	UNPLATED	.965	.475	7-117285-3
-	.160		.965	.475	6-117285-8
-	.160		.965	.475	2-117285-7
-	.405		1.192	.702	2-OBSOLETE-5
-	.190		.965	.475	2-4
-	.160		.965	.475	2-3
-	.415		1.192	.702	2-OBSOLETE-2
-	.200		.965	.475	2-OBSOLETE-1
119529	.160		.965	.475	2-0
119330	-		1.192	.702	1-9
119328	-		.965	.475	1-117285-8

COMB NO.	DETAIL C(D)	FINISH	B	A	PART NO.
-			1.192	.702	1-OBSOLETE-7
-			.965	.475	1-6
-			.965	.475	1-OBSOLETE-5
-			1.192	.702	1-OBSOLETE-4
-	.190		.965	.475	1-3
-	.160		.965	.475	1-2
-	.415		.965	.475	1-OBSOLETE-1
-	.200		.965	.475	1-OBSOLETE-0
-	.160		.965	.475	1-9
-			1.192	.702	117285-8
-			.965	.475	117285-7
-			1.192	.702	117285-5
-			.965	.475	117285-2



SECTION "X"-"X"



NOTE:  
REFER TO AMP SPEC. 106-14018 OR 106-14019, AS APPLICABLE FOR SPECIFIC HOLE SIZE RECOMMENDATIONS.

DETAIL C

ACTION PIN AREA

THIS DRAWING IS A CONTROLLED DOCUMENT.

DIMENSIONS: mm [INCHES]	TOLERANCES UNLESS OTHERWISE SPECIFIED:	0 PLG ± .010	1 PLG ± .010	2 PLG ± .010	3 PLG ± .010	4 PLG ± .010	ANGLES ± .5°
MATERIAL: COPPER-NICKEL-TIN ALLOY STRIP COVER ALLOY: 95.75% SPRING TEMPER	FINISH: 1 2 7 8 9	TYCO ELECTRONICS CORPORATION Harrisburg, Pa 17105-3608		CONTACT, ECONOMATE I (.156 X .200 CL.)		SIZE: CASE CODE: DRAWING NO: A2 00779 ©=117285	
CUSTOMER DRAWING		SCALE: 6:1		SHEET: 1 OF 1		REV: K1	

AMP 1471-9 REV 31MM2000

117285

A