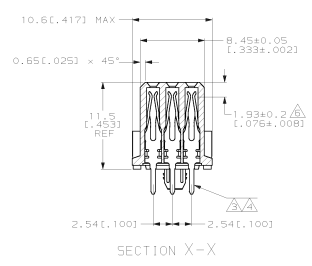
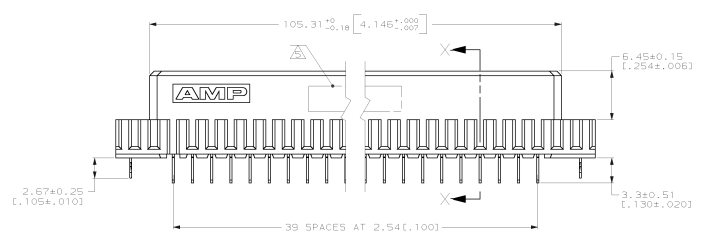
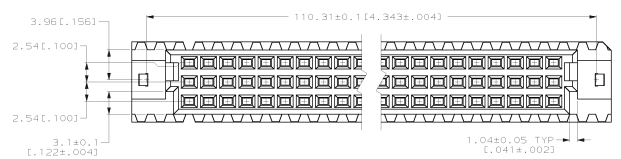
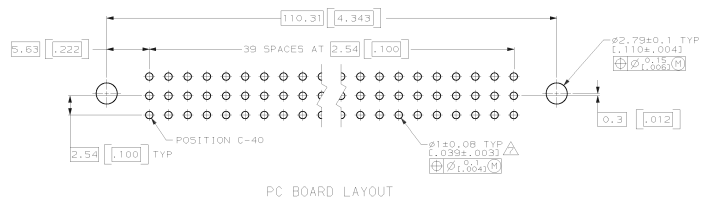
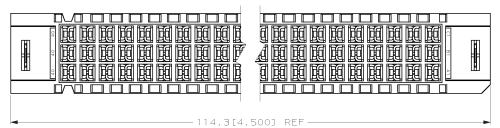


DRAWING MADE IN THIRD ANGLE PROJECTION
 THIS DRAWING IS UNPUBLISHED. RELEASED FOR PUBLICATION
 © COPYRIGHT 19 BY AMP INCORPORATED. ALL INTERNATIONAL RIGHTS RESERVED.

REV. NO.		DATE		DESCRIPTION		DATE	APP.
0	DRAWN	-	-	-	-	-	-
A	EC 0010-1437-95	11/11/96	CR				
B	EC 0010-1489-95	01/17/96	CR				
C	EC 0504-0087-96	11/18/96	CR				
D	REV PER EC 0018-0367-00	04/28/01	CR				



- △ HOUSING MATERIAL; GLASS-FILLED POLYESTER. COLOR; GRAY.
- △ CONTACT MATERIAL; PHOSPHOR BRONZE.
- △ CONTACT FINISH; DIN 41612 CLASS 2 IN CONTACT AREA. TIN-LEAD ON POSTS.
- △ CONTACT FINISH; DIN 41612 CLASS 3 IN CONTACT AREA. TIN-LEAD ON POSTS.
- △ PART NUMBER, DATE CODE IDENTIFICATION, CSA LOGO IN THIS APPROXIMATE AREA.
- △ CONTACT POINT.
- △ RECOMMENDED HOLE SIZE FOR MANUAL APPLICATION OF CONNECTOR ONTO PC BOARD.



SUPERSEDED BY	POSITIONS LOADED	C	B	A	NO. OF LOADED POSITIONS	ASSY PART NUMBER
						536494-5
						536494-4

DO NOT SCALE PRINT. UNLESS SPECIFIED DIMENSIONS IN MM (INCHES)	DR	DATE	AMP AMP INCORPORATED Murrysburg, PA 17155
	L. BRINER	10/19/92	
	EC	10/28/92	NAME RECEPTACLE ASSEMBLY, EUROCARD, TYPE "C" WITH BOARD-LOCKS
	R. PATTERSON	10/28/92	
	APRD	10/29/92	SIZE D 00779 DRAWING NO. 536494
	D. C. SUBERNAL		
	MATERIAL		SCALE 1:1 SHEET 1 OF 1
	HSG CONT		
	FINISH		
	APPLICATION SPEC		
	HEIGHT		

CUSTOMER DRAWING