

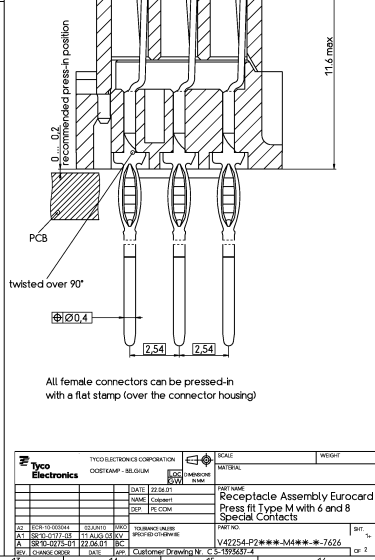
V42254-P2\*\*\*-M6\*\*

Performance level acc to DIN41612 and IEC 603-2	Noble metals	Code
Class I	PdNi + Au or Au	4
Class II	PdNi + Au or Au	5
Class III	PdNi + Au or Au	3

Nickel underlayer  
Protection film: HF-grease

V24254-P2\*\*\*-M\*\*\*

	L	Code
Pressfit	3.7 ±0.3	63
Pressfit	6.0 ±0.3	70
Pressfit - insertion area	13 ±0.5	60
Pressfit - wire-wrap	17 ±0.5	61
Pressfit - wire-wrap	20 ±0.5	68



All female connectors can be pressed-in with a flat stamp (over the connector housing)

TYCO ELECTRONICS CORPORATION		SCALE		MATERIAL		WEIGHT	
DATE	22/02/01	DATE	22/02/01	PART NAME	Receptacle Assembly Eurocard	DATE	11/08/00
NAME	Colombet	NAME	Colombet	DESCRIPTION	Press fit Type M with 6 and 8	DATE	11/08/00
REF	ES-C04	REF	ES-C04	TERMINATION	Special Contacts	DATE	11/08/00
DL	ES-C04-000000	DL	ES-C04-000000	PREPARED BY	V42254-P2***-M4***-7626	DATE	11/08/00
AL	ES-C04-000000	AL	ES-C04-000000	PROPOSED BY		DATE	11/08/00
PL	ES-C04-000000	PL	ES-C04-000000	DATE		DATE	11/08/00
CH	CHANGE 0000	CH	CHANGE 0000	Customer Drawing N°	C5-199607-4	DATE	11/08/00

THIS INFORMATION IS CONFIDENTIAL AND PROPRIETARY TO TYCO ELECTRONICS CORPORATION AND ITS WORLDWIDE SUBSIDIARIES AND AFFILIATES. IT MAY NOT BE DISCLOSED TO ANYONE, OTHER THAN TYCO ELECTRONICS PERSONNEL, WITHOUT WRITTEN AUTHORIZATION FROM TYCO ELECTRONICS CORPORATION, HARRISBURG, PENNSYLVANIA, USA.

PROPRIETARY:

Old Part Number	TE Part Number	Style & Number of Positions	Termination posts	Loaded Rows	Performance Level	Board Locks	
V42254-P2263-M240	5-1393637-4	M24+8	3.7mm Press-in terminals	every row , every pitch	2	No	OBSELETE
V42254-P2263-M420	5-1393637-7	M42+6	3.7mm Press-in terminals	every row , every pitch	2	No	

Active part numbers.  
Contact Tyco Electronics for other configuration availability

		TYCO ELECTRONICS CORPORATION		SCALE		WEIGHT	
		OOSTKAMP - BELGIUM		DIMENSIONS IN MM		MATERIAL	
		DATE 22.06.01		PART NAME			
		NAME Colpaert		Press fit Type M with 6 and 8			
		DEP. PE COM		Special Contacts			
		TOLERANCE UNLESS SPECIFIED OTHERWISE		PART NO.		SHT. 2-	
A2 SEE SHEET 1		Customer Drawing Nr. C.5-1393637-4		V42254-P2***-M4***-7626		OF 2	
REV.	CHANGE ORDER	DATE	APP.				