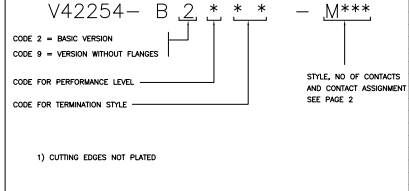
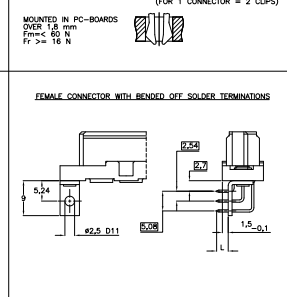
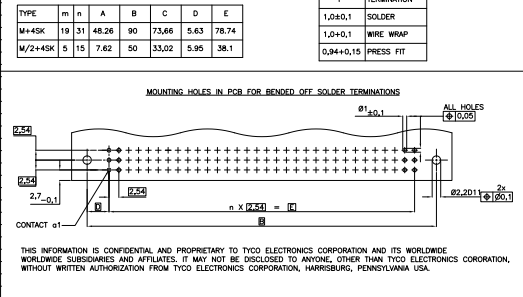
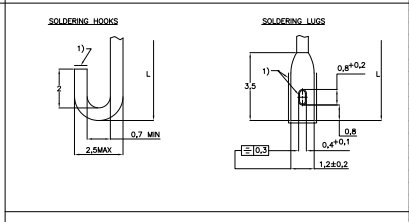
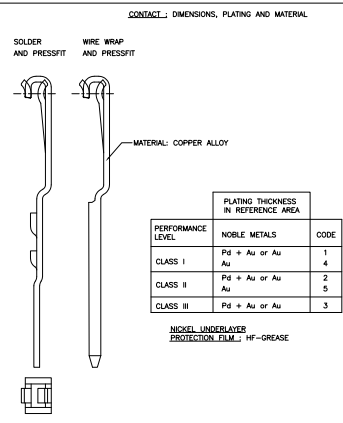
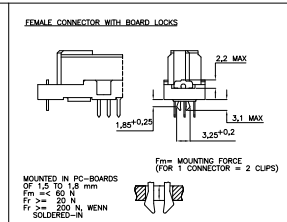
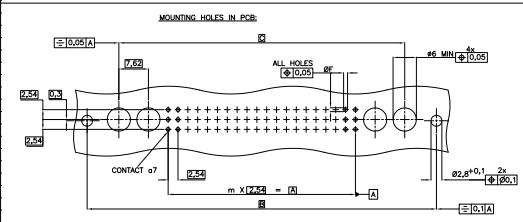


REV	DATE	DESCRIPTION	BY	CHK
H				
B4	SR10-0294-03		06-01-04	KV
B5	ECR-08-020743		19-09-09	AEG MKO
B6	ECR-10-02555		01-04-10	PK MKO

TERMINATION STYLES	L	CODE
	2,9±0,3	01
	3,7±0,3	02
	4,5±0,3	04
	5,3±0,3	03
	7,1±0,3	40
	13±0,5	30
	5,5±0,3	35
	10±0,5	36
	5,5±0,3	10
	10±0,5	00
	3-0.4	10
	1,55-0.4	00



THIS DRAWING IS A CONTROLLED DOCUMENT.		DATE: 10/09/04		DRAWN BY: H. HARTIG		CHECKED BY: H. HARTIG		DATE: 10/09/04	
DIMENSIONS: mm		SCALE: 1:1		PROJECT: RECEPTACLE ASSEMBLY EUROCARD		PART: TYPE M+4 SPECIAL CONTACTS AND SHORT VERSIONS		REVISION: 1	
DRAWING NO: A1		DATE: 10/09/04		DRAWING NO: 1-1393640-2		REVISION: 1		DATE: 10/09/04	
CUSTOMER DRAWING		DATE: 10/09/04		DRAWING NO: 1-1393640-2		REVISION: 1		DATE: 10/09/04	

PRODUCT DESCRIPTION CODE	TE PART NUMBER	STYLE & NUMBER OF POSITIONS	TERMINATION POSTS	LOADED ROWS	PERFORMANCE LEVEL	BOARD LOCKS	
V42254-B2101-M120	1-1393640-2	M12+4	2,9mm STRAIGHT SOLDER LEADS	EVERY ROW , EVERY PITCH	1	NO	OBSOLETE
V42254-B2102-M120	2-1393640-7	M12+4	4,5mm STRAIGHT SOLDER LEADS	EVERY ROW , EVERY PITCH	1	NO	OBSOLETE
V42254-B2102-M600	2-1393640-9	M60+4	4,5mm STRAIGHT SOLDER LEADS	EVERY ROW , EVERY PITCH	1	NO	OBSOLETE
V42254-B2102-M610	3-1393640-0	M60+4	4,5mm STRAIGHT SOLDER LEADS	EVERY ROW , EVERY PITCH	1	YES	OBSOLETE
V42254-B2110-M600	4-1393640-3	M60+4	RIGHT-ANGLE SOLDER LEADS WITH MOUNTING BRACKET	EVERY ROW , EVERY PITCH	1	NO	OBSOLETE
V42254-B2135-M120	5-1393640-2	M12+4	5,5/10mm SOLDER LUGS	EVERY ROW , EVERY PITCH	1	NO	OBSOLETE
V42254-B2140-M120	6-1393640-3	M12+4	13mm STRAIGHT WIRE-WRAP PINS	EVERY ROW , EVERY PITCH	1	NO	OBSOLETE
V42254-B2140-M600	6-1393640-6	M60+4	13mm STRAIGHT WIRE-WRAP PINS	EVERY ROW , EVERY PITCH	1	NO	OBSOLETE
V42254-B2201-M110	9-1393640-6	M12+4	2,9mm STRAIGHT SOLDER LEADS	EVERY ROW , EVERY PITCH	2	YES	OBSOLETE
V42254-B2201-M600	1393641-3	M60+4	2,9mm STRAIGHT SOLDER LEADS	EVERY ROW , EVERY PITCH	2	NO	OBSOLETE
V42254-B2201-M603	1393641-4	M60+4	2,9mm STRAIGHT SOLDER LEADS	ROW A+C , EVERY PITCH	2	NO	OBSOLETE
V42254-B2202-M120	4-1393641-1	M12+4	4,5mm STRAIGHT SOLDER LEADS	EVERY ROW , EVERY PITCH	2	NO	OBSOLETE
V42254-B2202-M600	4-1393641-6	M60+4	4,5mm STRAIGHT SOLDER LEADS	EVERY ROW , EVERY PITCH	2	NO	OBSOLETE
V42254-B2202-M603	4-1393641-8	M60+4	4,5mm STRAIGHT SOLDER LEADS	ROW A+C , EVERY PITCH	2	NO	OBSOLETE
V42254-B2202-M610	4-1393641-9	M60+4	4,5mm STRAIGHT SOLDER LEADS	EVERY ROW , EVERY PITCH	2	YES	SUPERSEDED BY 4-1393641-6
V42254-B2202-M613	5-1393641-0	M60+4	4,5mm STRAIGHT SOLDER LEADS	ROW A+C , EVERY PITCH	2	YES	OBSOLETE
V42254-B2203-M600	6-1393641-2	M60+4	6,3mm STRAIGHT SOLDER LEADS	EVERY ROW , EVERY PITCH	2	NO	OBSOLETE
V42254-B2203-M603	6-1393641-3	M60+4	6,3mm STRAIGHT SOLDER LEADS	ROW A+C , EVERY PITCH	2	NO	OBSOLETE
V42254-B2210-M603	8-1393641-1	M60+4	RIGHT-ANGLE SOLDER LEADS WITH MOUNTING BRACKET	ROW A+C , EVERY PITCH	2	NO	OBSOLETE
V42254-B2235-M120	9-1393641-7	M12+4	5,5/10mm SOLDER LUGS	EVERY ROW , EVERY PITCH	2	NO	OBSOLETE
V42254-B2235-M600	9-1393641-9	M60+4	5,5/10mm SOLDER LUGS	EVERY ROW , EVERY PITCH	2	NO	OBSOLETE
V42254-B2240-M120	2-1393642-2	M12+4	13mm STRAIGHT WIRE-WRAP PINS	EVERY ROW , EVERY PITCH	2	NO	OBSOLETE
V42254-B2240-M600	2-1393642-6	M60+4	13mm STRAIGHT WIRE-WRAP PINS	EVERY ROW , EVERY PITCH	2	NO	OBSOLETE
V42254-B2240-M603	2-1393642-7	M60+4	13mm STRAIGHT WIRE-WRAP PINS	ROW A+C , EVERY PITCH	2	NO	OBSOLETE

1) ACCORDING TO BT 236 LEVEL 2.

ACTIVE PART NUMBERS.
CONTACT TYCO ELECTRONICS FOR OTHER CONFIGURATION AVAILABILITY

THIS DRAWING IS A CONTROLLED DOCUMENT.

UN CHG REV REVISIONS

GW - - - - -

DESCRIPTION DATE

SEE SHEET 1

RECEIPTABLE ASSEMBLY EUROCARD TYPE M+4 SPECIAL CONTACTS AND SHORT VERSIONS

SIZE DATE SIZE DRAWING NO. 100779 G-1-1393640-2

CUSTOMER DRAWING

NTS 2 2 BE