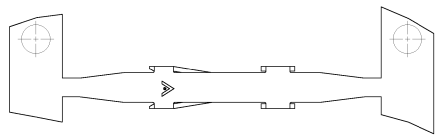
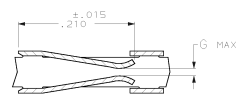
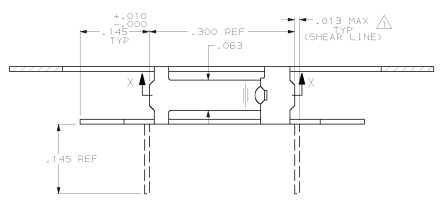


DRAWING MADE IN THIRD ANGLE PROJECTION
 THIS DRAWING IS UNPUBLISHED. RELEASED FOR PUBLICATION
 © COPYRIGHT 19 BY AMP INCORPORATED. ALL INTERNATIONAL RIGHTS RESERVED.

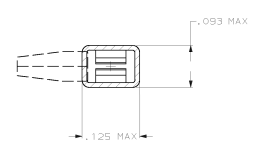
REV	BY	DATE	ZONE	LTG	DESCRIPTION	DATE	APPD
27	AD	39					
					M REV REDRAWN PER AB2730	04-19-99	-
					J REV PER ECU AB2785	04-19-99	-
					K REV LOC & DIST AB-4171	03-30-99	BF
					L REV PER 0010-1175-95	02-20-98	JH
					M REV PER 0030-0062-00	11-08-00	MZ



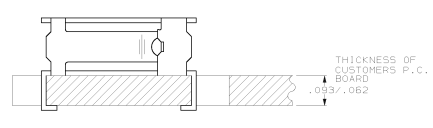
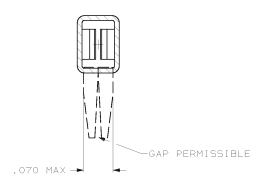
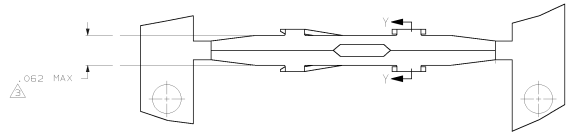
- △ CONTACT LEGS SHOWN DOTTED & SHEAR LINES DEFINE LOOSE PIECE PART.
- △ .000030 GOLD OVER .000050 NICKEL ENTIRE TERMINAL.
- △ .000100-.000200 BRIGHT TIN OVER .000030 NICKEL.
- △ GOLD FLASH OVER .000050 NICKEL ENTIRE TERMINAL, .000030 GOLD IN CONTACT AREA ONLY.
- △ GOLD FLASH OVER .000050 NICKEL ENTIRE TERMINAL, .000015 GOLD IN CONTACT AREA ONLY.
- △ .000079 MIN TIN.
- △ OBSOLETE PART NUMBER.



SECTION X-X



SECTION Y-Y



TYPICAL APPLICATION

.014	△	85493-6	△	85487-8
.010	△	85493-5	△	85487-5
.010	△	85493-4	△	85487-4
.010	△	85493-3	△	85487-3
.010	△	85493-2	△	85487-2
.014	△	85493-1	△	85487-1
G	FINISH	LOOSE PIECE PART NO	PART NUMBER	

DO NOT SCALE PRINT, UNLESS SPECIFIED. DIMENSIONS IN INCHES. DIMENSIONS ON 4 P.P.C. USE # 305. DIMENSIONS # 1.		DR 10-17-88 0 HELTZER	PART NO	
APPD 10-23-89 MARTIN W. CLARK		AMP INCORPORATED MORTONSBURG, PA. 17165		
MATERIAL PHOS. BRONZE		NAME CONTACT, FEMALE, MOD 1, HORIZONTAL, STD. PRESSURE, TYPE C		
FINISH SEE TABLE		APPLICATION SPEC -		SIZE D 00779
RETURN		DRAWING NO 85487		SHEET 1 OF 1

CUSTOMER DRAWING