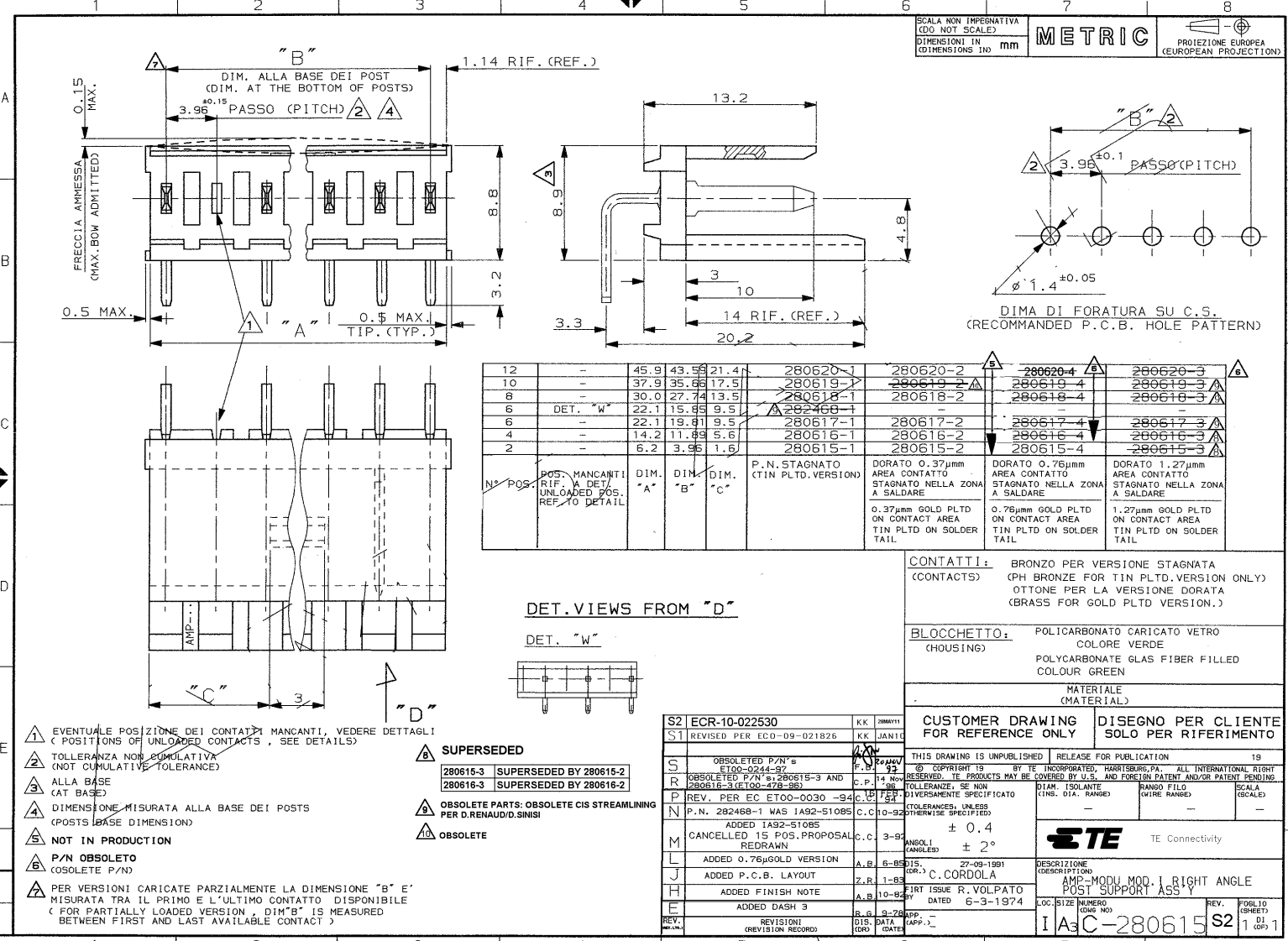
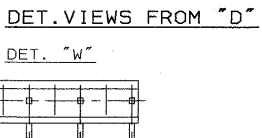


SCALA NON IMPEGNATIVA (DO NOT SCALE)
 DIMENSIONI IN mm METRIC
 PROIEZIONE EUROPEA (EUROPEAN PROJECTION)



N° POS.	POS. MANCANTI RIF. A DET. UNLOADED POS. REF. TO DETAIL	DIM. "A"	DIM. "B"	DIM. "C"	P.N. STAGNATO (TIN PLTD. VERSION)	DORATO 0.37µm AREA CONTATTO STAGNATO NELLA ZONA A SALDARE 0.37µm GOLD PLTD ON CONTACT AREA TIN PLTD ON SOLDER TAIL	DORATO 0.76µm AREA CONTATTO STAGNATO NELLA ZONA A SALDARE 0.76µm GOLD PLTD ON CONTACT AREA TIN PLTD ON SOLDER TAIL	DORATO 1.27µm AREA CONTATTO STAGNATO NELLA ZONA A SALDARE 1.27µm GOLD PLTD ON CONTACT AREA TIN PLTD ON SOLDER TAIL
12	-	45.9	43.95	21.4	280620-1	280620-2	280620-4	280620-3
10	-	37.9	35.65	17.5	280619-1	280619-2	280619-4	280619-3
8	-	30.0	27.74	13.5	280618-1	280618-2	280618-4	280618-3
6	DET. "W"	22.1	15.85	9.5	282468-1	-	-	-
6	-	22.1	19.81	9.5	280617-1	280617-2	280617-4	280617-3
4	-	14.2	11.89	5.6	280616-1	280616-2	280616-4	280616-3
2	-	6.2	3.95	1.6	280615-1	280615-2	280615-4	280615-3



CONTATTI: BRONZO PER VERSIONE STAGNATA (PH BRONZE FOR TIN PLTD. VERSION ONLY)
 OTTONE PER LA VERSIONE DORATA (BRASS FOR GOLD PLTD VERSION.)

BLOCCETTO: POLICARBONATO CARICATO VETRO COLORE VERDE
 (HOUSING) POLYCARBONATE GLAS FIBER FILLED COLOUR GREEN

MATERIALE (MATERIAL)

CUSTOMER DRAWING FOR REFERENCE ONLY DISEGNO PER CLIENTE SOLO PER RIFERIMENTO

THIS DRAWING IS UNPUBLISHED. RELEASE FOR PUBLICATION 19
 ALL RIGHTS RESERVED. TE PRODUCTS MAY BE COVERED BY U.S. AND FOREIGN PATENT AND/OR PENDING PATENT APPLICATIONS.

TE Connectivity

DESCRIPTION (DESCRIPTION)
 AMP-MODU MOD. 1 RIGHT ANGLE POST SUPPORT ASS Y
 I A3 C-280615 S2 1 (REV. 1)

- ⚠ EVENTUALE POSIZIONE DEI CONTATTI MANCANTI, VEDERE DETTAGLI (POSITIONS OF UNLOADED CONTACTS , SEE DETAILS)
- ⚠ TOLLERANZA NON CUMULATIVA (NOT CUMULATIVE TOLERANCE)
- ⚠ ALLA BASE (AT BASE)
- ⚠ DIMENSIONE MISURATA ALLA BASE DEI POSTI (POSTS BASE DIMENSION)
- ⚠ NOT IN PRODUCTION
- ⚠ P/N OBSOLETO (OBSOLETE P/N)
- ⚠ PER VERSIONI CARICATE PARZIALMENTE LA DIMENSIONE "B" E' MISURATA TRA IL PRIMO E L'ULTIMO CONTATTO DISPONIBILE (FOR PARTIALLY LOADED VERSION , DIM"B" IS MEASURED BETWEEN FIRST AND LAST AVAILABLE CONTACT)

- ⚠ SUPERSEDED
 280615-3 SUPERSEDED BY 280615-2
 280616-3 SUPERSEDED BY 280616-2
- ⚠ OBSOLETE PARTS: OBSOLETE CIS STREAMLINING PER D.RENAUD/D.SINISI
- ⚠ OBSOLETE

S2	ECR-10-022530	KK	200411
S1	REVISED PER ECO-09-021826	KK	JAN10
S	OBSOLETE P/N'S ETOO-0244-97	P.B.	97
R	OBSOLETE P/N'S 280615-3 AND 280616-3 (ETOO-478-85)	C.P.	98
P	REV. PER EC ETOO-0030-94	C.D.	97
N	P.N. 282468-1 WAS IAS2-S1085	C.C.	10-92
M	ADDED IAS2-S1085 CANCELLED 15 POS. PROPOSAL REDRAWN	C.C.	3-92
L	ADDED 0.76µm GOLD VERSION	A.B.	6-85
J	ADDED P.C.B. LAYOUT	Z.R.	1-83
H	ADDED FINISH NOTE	A.B.	10-82
E	ADDED DASH 3	B.G.	9-26
REV.	REVISIONS (REVISION RECORD)	DIS. DATA (APP.)	(DATE)