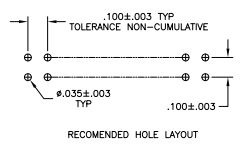
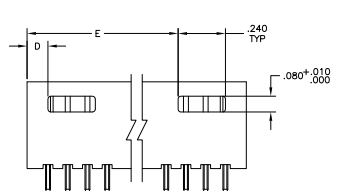
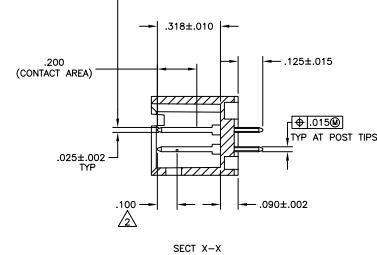
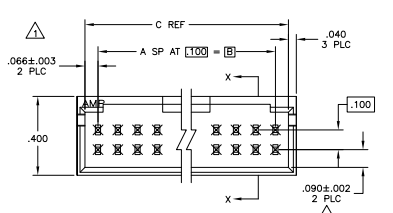
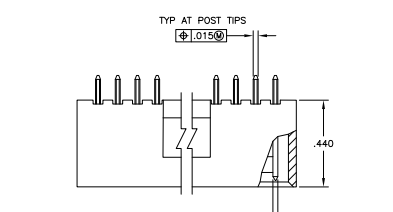


- △ THE NOTED DIMENSIONS APPLY AT THE INTERSECTION OF THE POST AND HOUSING
- △ POINT OF MEASUREMENT FOR PLATING THICKNESS
- △ FINISH: POSTS: .00015 GOLD IN CONTACT AREA, .000100-.000200 MATTE TIN-LEAD ON SOLDER TAIL, ALL OVER .000050 NICKEL
- △ FINISH: POSTS: .00015 GOLD IN CONTACT AREA, .000100-.000200 MATTE TIN ON SOLDER TAIL, ALL OVER .000050 NICKEL
- △ MATERIALS: HOUSING- FLAME RETARDANT THERMOPLASTIC, COLOR-BLACK POSTS- PHOS BRONZE
- △ OBSOLETE PARTS: OBSOLETE CIS STREAMLINING PER D.RENAUD/D.SINISI



REV	DATE	DESCRIPTION	BY	CHKD	APPD		
△	3.506	.106	3.732	3.600	36	74	3-102618-5
△	3.406	.106	3.632	3.500	35	72	3-102618-4
△	3.306	.106	3.532	3.400	34	70	3-102618-3
△	3.206	.106	3.432	3.300	33	68	3-102618-2
△	3.106	.106	3.332	3.200	32	66	3-102618-1
△	3.006	.106	3.232	3.100	31	64	3-102618-0
△	2.906	.106	3.132	3.000	30	62	3-102618-9
△	2.806	.106	3.032	2.900	29	60	3-102618-8
△	2.706	.106	2.932	2.800	28	58	3-102618-7
△	2.606	.106	2.832	2.700	27	56	3-102618-6
△	2.506	.106	2.732	2.600	26	54	3-102618-5
△	2.406	.106	2.632	2.500	25	52	3-102618-4
△	2.306	.106	2.532	2.400	24	50	3-102618-3
△	2.206	.106	2.432	2.300	23	48	3-102618-2
△	2.106	.106	2.332	2.200	22	46	3-102618-1
△	2.006	.106	2.232	2.100	21	44	3-102618-0
△	1.906	.106	2.132	2.000	20	42	3-102618-9
△	1.806	.106	2.032	1.900	19	40	3-102618-8
△	1.706	.106	1.932	1.800	18	38	3-102618-7
△	1.606	.106	1.832	1.700	17	36	3-102618-6
△	1.506	.106	1.732	1.600	16	34	3-102618-5
△	1.406	.106	1.632	1.500	15	32	3-102618-4
△	1.306	.106	1.532	1.400	14	30	3-102618-3
△	1.206	.106	1.432	1.300	13	28	3-102618-2
△	1.106	.106	1.332	1.200	12	26	3-102618-1
△	1.006	.106	1.232	1.100	11	24	3-102618-0
△	.906	.106	1.132	1.000	10	22	3-102618-9
△	.806	.106	1.032	.900	9	20	3-102618-8
△	.706	.106	.932	.800	8	18	3-102618-7
△	.606	.106	.832	.700	7	16	3-102618-6
△	.506	.106	.732	.600	6	14	3-102618-5
△	.406	.106	.632	.500	5	12	3-102618-4
△	.306	.106	.532	.400	4	10	3-102618-3
△	.206	.106	.432	.300	3	8	3-102618-2
△	.106	.106	.332	.200	2	6	3-102618-1
△	3.506	.106	3.732	3.600	36	74	3-102618-5
△	3.406	.106	3.632	3.500	35	72	3-102618-4
△	3.306	.106	3.532	3.400	34	70	3-102618-3
△	3.206	.106	3.432	3.300	33	68	3-102618-2
△	3.106	.106	3.332	3.200	32	66	3-102618-1
△	3.006	.106	3.232	3.100	31	64	3-102618-0
△	2.906	.106	3.132	3.000	30	62	3-102618-9
△	2.806	.106	3.032	2.900	29	60	3-102618-8
△	2.706	.106	2.932	2.800	28	58	3-102618-7
△	2.606	.106	2.832	2.700	27	56	3-102618-6
△	2.506	.106	2.732	2.600	26	54	3-102618-5
△	2.406	.106	2.632	2.500	25	52	3-102618-4
△	2.306	.106	2.532	2.400	24	50	3-102618-3
△	2.206	.106	2.432	2.300	23	48	3-102618-2
△	2.106	.106	2.332	2.200	22	46	3-102618-1
△	2.006	.106	2.232	2.100	21	44	3-102618-0
△	1.906	.106	2.132	2.000	20	42	3-102618-9
△	1.806	.106	2.032	1.900	19	40	3-102618-8
△	1.706	.106	1.932	1.800	18	38	3-102618-7
△	1.606	.106	1.832	1.700	17	36	3-102618-6
△	1.506	.106	1.732	1.600	16	34	3-102618-5
△	1.406	.106	1.632	1.500	15	32	3-102618-4
△	1.306	.106	1.532	1.400	14	30	3-102618-3
△	1.206	.106	1.432	1.300	13	28	3-102618-2
△	1.106	.106	1.332	1.200	12	26	3-102618-1
△	1.006	.106	1.232	1.100	11	24	3-102618-0
△	.906	.106	1.132	1.000	10	22	3-102618-9
△	.806	.106	1.032	.900	9	20	3-102618-8
△	.706	.106	.932	.800	8	18	3-102618-7
△	.606	.106	.832	.700	7	16	3-102618-6
△	.506	.106	.732	.600	6	14	3-102618-5
△	.406	.106	.632	.500	5	12	3-102618-4
△	.306	.106	.532	.400	4	10	3-102618-3
△	.206	.106	.432	.300	3	8	3-102618-2
△	.106	.106	.332	.200	2	6	3-102618-1
PLATING	E	D	C	B	A	NO. OF POSN	ASSEMBLY PART NUMBER

THIS DRAWING IS A CONTROLLED DOCUMENT. IN ACCEL 11-87

DESIGNED BY	DATE	REV	DATE
REVISIONS	BY	DATE	DESCRIPTION

TE Connectivity

HDR ASSY, MOD II, SHROUDED, 4 SDCS, DBL ROW, VERTICAL, 100X100 G/L WITH .0025 SD POSTS

SIZE DATE SIZE DRAWING NO. RESTRICTED TO

RESTRICTED CUSTOMER A1 00779 G=102618