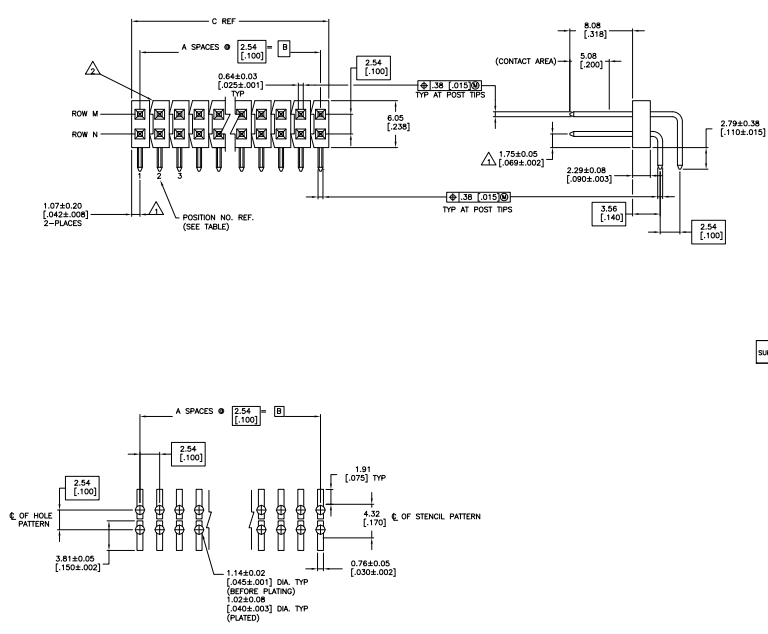


THIS DRAWING IS UNPUBLISHED
 © 2008 BY TYS ELECTRONICS CORPORATION. ALL RIGHTS RESERVED.

REV	DATE	DESCRIPTION	BY	CHKD
C	02/03/05	21MMR05	BSV	JLG
CT	REVISED PER ECO-09-021826	26M009	KK	AEG



RECOMMENDED PC BOARD MOUNTING DIMENSIONS
 FOR .063 [1.60] THICK PC BOARD AND
 .012 [.305] STENCIL THICK

- △ THE NOTED DIMENSIONS APPLY AT THE INTERSECTION OF THE POST AND HOUSING.
- △ BREAKAWAY NOTCH ANGLE CAN BE ORIENTED TO THE RIGHT (AS SHOWN) OR TO THE LEFT.
- 3. FOR ACTIVE POSITION SIZES 4 AND ABOVE, POSTS WILL BE SELECTIVELY SWAGED TO PROVIDE CONNECTOR RETENTION TO THE PC BOARD UNTIL SOLDERED. FOR POSITION SIZE 2, POSTS WILL BE KINKED (SEE TABLE FOR RETENTION FEATURE LOCATION)
- △ 0.000762 [0.00030] GOLD ON CONTACT AREA, 0.00254-0.00508 [.000100-.000200] MATTE TIN-LEAD ON SOLDER TAIL ALL OVER 0.00127 [.000050] NICKEL.
- △ HOUSING: GLASS FILLED THERMOPLASTIC, COLOR, BLACK. (WILL WITHSTAND VAPOR PHASE REFLOW.)
- △ 0.000762 [0.00030] GOLD ON CONTACT AREA, 0.00254-0.00508 [.000100-.000200] MATTE TIN ON SOLDER TAIL ALL OVER 0.00127 [.000050] NICKEL.
- △ OBSOLETE PARTS: OBSOLETE CIS STREAMLINING PER D.RENAUD/D.SINISI

ROW M	ROW N	C	B	A	NO. OF POSITIONS	PART NUMBER
△	△	1,2,39,40	1,2,39,40	101-19 [3,984]	99.06 [3,900]	39 80 4-146311-0
△	△	1,2,38,39	1,2,38,39	98.65 [3,884]	96.52 [3,800]	38 78 3-146311-9
△	△	1,2,37,38	1,2,37,38	96.11 [3,784]	93.98 [3,700]	37 76 3-146311-8
△	△	1,2,36,37	1,2,36,37	93.57 [3,684]	91.44 [3,600]	36 74 3-146311-7
△	△	1,2,35,36	1,2,35,36	91.03 [3,584]	88.90 [3,500]	35 72 3-146311-6
△	△	1,2,34,35	1,2,34,35	88.49 [3,484]	86.36 [3,400]	34 70 3-146311-5
△	△	1,2,33,34	1,2,33,34	85.95 [3,384]	83.82 [3,300]	33 68 3-146311-4
△	△	1,2,32,33	1,2,32,33	83.41 [3,284]	81.28 [3,200]	32 66 3-146311-3
△	△	1,2,31,32	1,2,31,32	80.87 [3,184]	78.74 [3,100]	31 64 3-146311-2
△	△	1,2,30,31	1,2,30,31	78.33 [3,084]	76.20 [3,000]	30 62 3-146311-1
△	△	1,2,29,30	1,2,29,30	75.79 [2,984]	73.66 [2,900]	29 60 3-146311-0
△	△	1,2,28,29	1,2,28,29	73.25 [2,884]	71.12 [2,800]	28 58 2-146311-9
△	△	1,2,27,28	1,2,27,28	70.71 [2,784]	68.58 [2,700]	27 56 2-146311-8
△	△	1,2,26,27	1,2,26,27	68.17 [2,684]	66.04 [2,600]	26 54 2-146311-7
△	△	1,2,25,26	1,2,25,26	65.63 [2,584]	63.50 [2,500]	25 52 2-146311-6
△	△	1,2,24,25	1,2,24,25	63.09 [2,484]	60.96 [2,400]	24 50 2-146311-5
△	△	1,2,23,24	1,2,23,24	60.55 [2,384]	58.42 [2,300]	23 48 2-146311-4
△	△	1,2,22,23	1,2,22,23	58.01 [2,284]	55.88 [2,200]	22 46 2-146311-3
△	△	1,2,21,22	1,2,21,22	55.47 [2,184]	53.34 [2,100]	21 44 2-146311-2
△	△	1,2,20,21	1,2,20,21	52.93 [2,084]	50.80 [2,000]	20 42 2-146311-1
△	△	1,2,19,20	1,2,19,20	50.39 [1,984]	48.26 [1,900]	19 40 2-146311-0
△	△	1,2,18,19	1,2,18,19	47.85 [1,884]	45.72 [1,800]	18 38 1-146311-9
△	△	1,2,17,18	1,2,17,18	45.31 [1,784]	43.18 [1,700]	17 36 1-146311-8
△	△	1,2,16,17	1,2,16,17	42.77 [1,684]	40.64 [1,600]	16 34 1-146311-7
△	△	1,2,15,16	1,2,15,16	40.23 [1,584]	38.10 [1,500]	15 32 1-146311-6
△	△	1,2,14,15	1,2,14,15	37.69 [1,484]	35.56 [1,400]	14 30 1-146311-5
△	△	1,2,13,14	1,2,13,14	35.15 [1,384]	33.02 [1,300]	13 28 1-146311-4
△	△	1,2,12,13	1,2,12,13	32.61 [1,284]	30.48 [1,200]	12 26 1-146311-3
△	△	1,2,11,12	1,2,11,12	30.07 [1,184]	27.94 [1,100]	11 24 1-146311-2
△	△	1,2,10,11	1,2,10,11	27.53 [1,084]	25.40 [1,000]	10 22 1-146311-1
△	△	1,2,9,10	1,2,9,10	24.99 [984]	22.86 [900]	9 20 1-146311-0
△	△	1,2,8,9	1,2,8,9	22.45 [884]	20.32 [800]	8 18 146311-9
△	△	1,2,7,8	1,2,7,8	19.91 [784]	17.78 [700]	7 16 146311-8
△	△	1,2,6,7	1,2,6,7	17.37 [684]	15.24 [600]	6 14 146311-7
△	△	1,2,5,6	1,2,5,6	14.83 [584]	12.70 [500]	5 12 146311-6
△	△	1,2,4,5	1,2,4,5	12.29 [484]	10.16 [400]	4 10 146311-5
△	△	1,2,3,4	1,2,3,4	9.75 [384]	7.62 [300]	3 8 146311-4
△	△	1,2,3	1,2,3	7.21 [284]	5.08 [200]	2 6 146311-3
△	△	1,2	1,2	4.67 [184]	2.94 [100]	1 4 146311-2
△	△	1	1	2.13 [84]	-	0 2 146311-1

SUPERSEDED BY 7-146311-5

OBSOLETE

OBSOLETE

OBSOLETE

OBSOLETE

OBSOLETE

OBSOLETE

OBSOLETE

OBSOLETE

OBSOLETE

OBSOLETE

OBSOLETE

OBSOLETE

OBSOLETE

OBSOLETE

THIS DRAWING IS A CONTROLLED DOCUMENT.

INCHES (mm) DECIMALS (mm) FRACTIONS (mm) ANGLES (DEGREES) DIMENSIONS (mm) TOLERANCES (mm) SURFACE FINISH (mm) MATERIALS (mm) FINISHES (mm) DIMENSIONS (mm) TOLERANCES (mm) SURFACE FINISH (mm) MATERIALS (mm) FINISHES (mm)

DATE: 02/03/05
 DRAWN BY: BSV
 CHECKED BY: JLG
 PART NO: 146311-0
 REV: 01

Customer Drawing

