

4

3

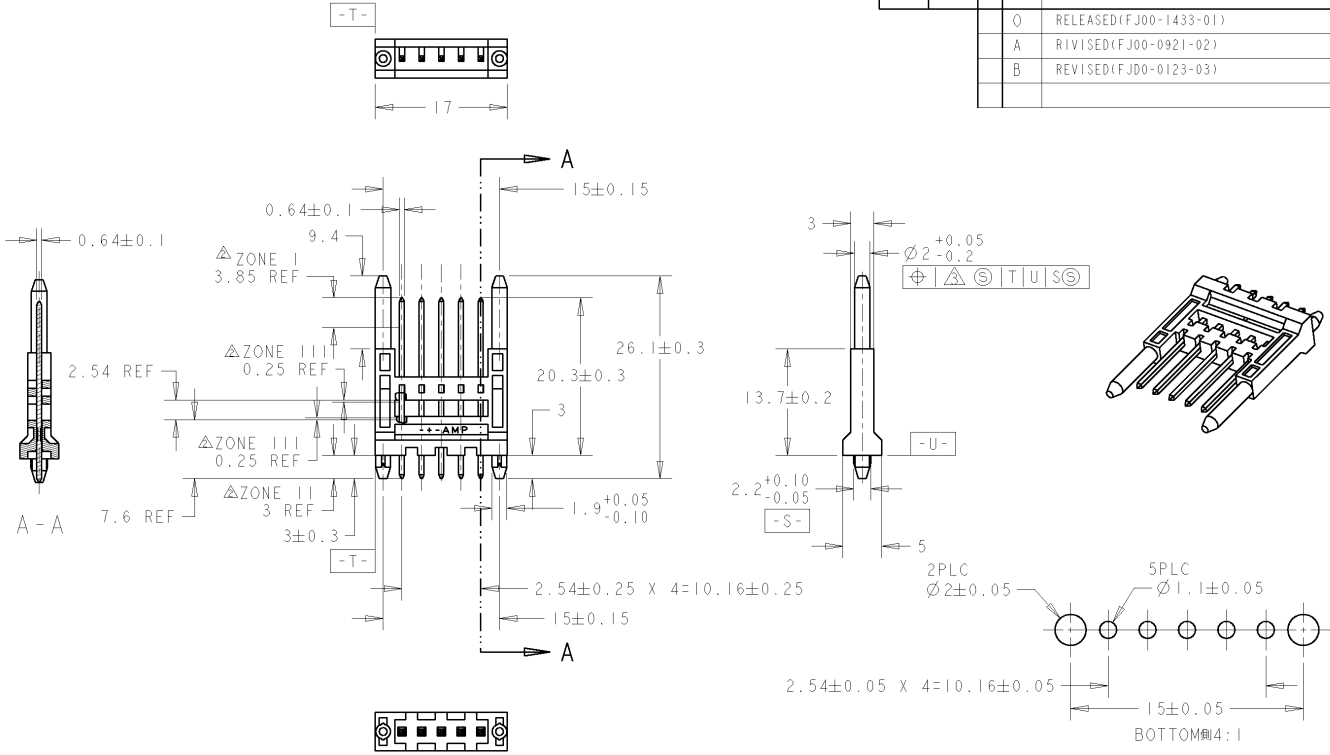
2

1

THIS DRAWING IS UNPUBLISHED. RELEASED FOR PUBLICATION 20
 © COPYRIGHT 20 BY TYCO ELECTRONICS CORPORATION. ALL RIGHTS RESERVED.

LOC	DIST	REVISIONS			
P	LTR	DESCRIPTION	DATE	DNW	APVD
Q		RELEASED(FJ00-1433-01)	23APR01	K.R	S.M
A		RIVISED(FJ00-0921-02)	25APR02	K.R	S.M
B		REVISED(FJ00-0123-03)	01AUG03	K.R	S.M

-2 : AS SHOWN
 -2 : 本図



推奨取付基板寸法(適用基板厚: 1.0±0.15)
 RECOMMENDED P.C.BOARD LAYOUT(BOARD THICKNESS: 1.0±0.15)

△材料 ハウジング: ガラス入り熱可塑性ポリエステル(UL94V-0), 色: 黒
 コンタクト: 黄銅

△仕上げ 全周: ニッケルめっき下地 1.27µm以上
 接触部(ZONE I): 金のつき 0.2µm以上
 基板取付部(ZONE II): 錫めっき 2µm以上
 非めっき部(ZONE III)

△AMPマーク側: 1.76, キャビティマーク側: 0.4

△MATERIAL HOUSING: POLYESTER OF GLASS FILLED THERMO PLASTIC(UL94V-0), COLOR: BLACK

△FINISH CONTACT: BRASS
 UNDER: NI PLATING ALL SURFACE 1.27µm MIN
 CONTACT AREA(ZONE I): Au PLATING 0.2µm MIN
 P.C. BOARD ATTACHMENT AREA(ZONE II): TIN PLATING 2µm MIN
 NOT PLATED AREA(ZONE III)

△AMP MARK SIDE: 1.76, CAVITY MARK SIDE: 0.4

<small>THIS DRAWING IS A CONTROLLED DOCUMENT FOR TYCO ELECTRONICS CORPORATION IT IS SUBJECT TO CHANGE AND THE CONTROL FOR ENGINEERING DEPARTMENT SHOULD BE CONTACTED FOR THE LATEST REVISION.</small>		DWN 23APR01 K.RIKU CHR S.MANABE 23APR01 S.MANABE APVD S.MANABE 23APR01 S.MANABE	Tyco Electronics AMP K.K. Kawasaki, Japan
DIMENSIONS: mm 	TOLERANCES UNLESS OTHERWISE SPECIFIED: 0 PLC ±0.3 1 PLC ±0.25 2 PLC ±0.2 3 PLC ± 4 PLC ± ANGLES ±	NAME BE CONN. POST HEADER ASSY (13.7mm HEIGHT) PRODUCT SPEC 108-5727 APPLICATION SPEC -	SIZE A3 CAGE CODE 00779 DRAWING NO. C-1376778 RESTRICTED TO -
MATERIAL SEE NOTE	FINISH SEE NOTE	WEIGHT 1.14g	CUSTOMER DRAWING
		SCALE 2:1	SHEET 1 OF 1 REV B

AMP 1470-19 REV 31MAR2000

Proj:ENGINEER DRAWING