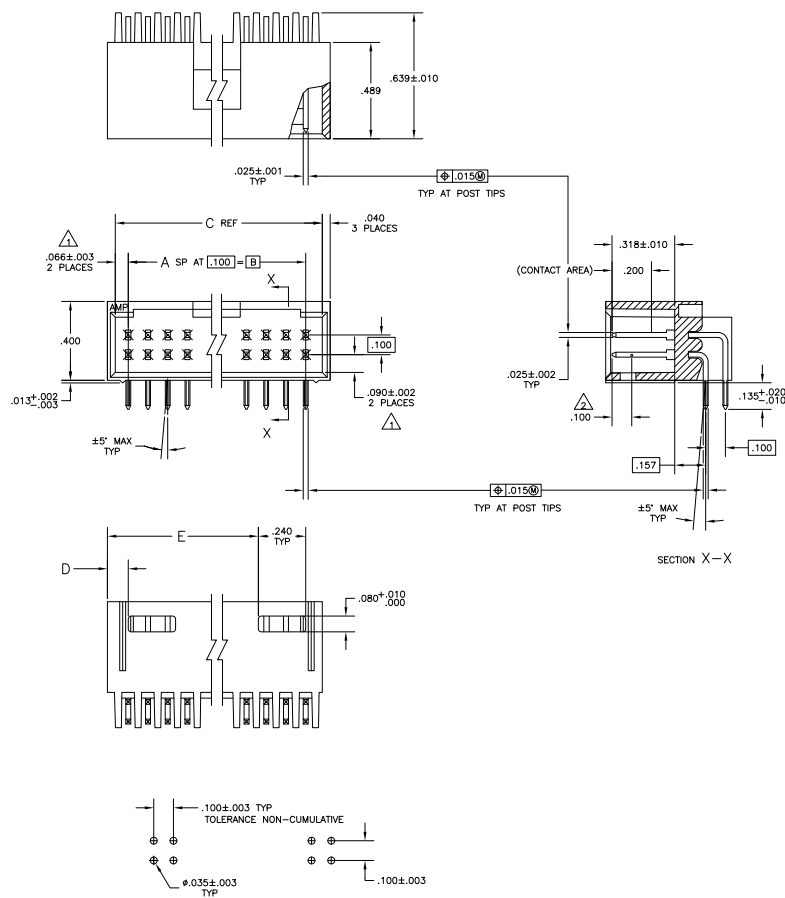


REV	DATE	DESCRIPTION	BY	CHK	APP
AD	00				
1	11/08/11	REVISED PER ECD-11-004587			RK HMR

- △ THE NOTED DIMENSIONS APPLY AT THE INTERSECTION OF THE POST AND HOUSING
- △ POINT OF MEASUREMENT FOR PLATING THICKNESS
- △ .00015 GOLD IN CONTACT AREA, .000100-.000200 MATTE TIN-LEAD ON SOLDER TAIL, ALL OVER .000050 NICKEL
- △ .00015 GOLD IN CONTACT AREA, .000100-.000200 MATTE TIN ON SOLDER TAIL, ALL OVER .000050 NICKEL
- △ OBSOLETE PARTS: OBSOLETE CIS STREAMLINING PER D.RENAUD/D.SINISI



PLATING	E	D	C	B	A	NO OF POSN	ASSEMBLY PART NUMBER
△	3.506	.106	3.732	3.600	36	74	AS-102617-6
△	3.406	.106	3.632	3.500	35	72	AS-102617-4
△	3.306	.106	3.532	3.400	34	70	AS-102617-3
△	3.206	.106	3.432	3.300	33	68	AS-102617-2
△	3.106	.106	3.332	3.200	32	66	AS-102617-1
△	3.006	.106	3.232	3.100	31	64	AS-102617-0
△	2.906	.106	3.132	3.000	30	62	AS-102617-9
△	2.806	.106	3.032	2.900	29	60	7-102617-8
△	2.706	.106	2.932	2.800	28	58	AS-102617-7
△	2.606	.106	2.832	2.700	27	56	AS-102617-6
△	2.506	.106	2.732	2.600	26	54	AS-102617-5
△	2.406	.106	2.632	2.500	25	52	AS-102617-4
△	2.306	.106	2.532	2.400	24	50	7-102617-3
△	2.206	.106	2.432	2.300	23	48	AS-102617-2
△	2.106	.106	2.332	2.200	22	46	AS-102617-1
△	2.006	.106	2.232	2.100	21	44	AS-102617-0
△	1.906	.106	2.132	2.000	20	42	AS-102617-9
△	1.806	.106	2.032	1.900	19	40	6-102617-8
△	1.706	.106	1.932	1.800	18	38	AS-102617-7
△	1.606	.106	1.832	1.700	17	36	AS-102617-6
△	1.506	.106	1.732	1.600	16	34	6-102617-5
△	1.406	.106	1.632	1.500	15	32	1-102617-4
△	1.306	.106	1.532	1.400	14	30	6-102617-3
△	1.206	.106	1.432	1.300	13	28	AS-102617-2
△	1.106	.106	1.332	1.200	12	26	6-102617-1
△	1.006	.106	1.232	1.100	11	24	6-102617-0
△	.906	.106	1.132	1.000	10	22	AS-102617-9
△	.806	.106	1.032	.900	9	20	5-102617-8
△	.406	.932	.800	.8	18	18	5-102617-7
△	.306	.832	.700	7	16	16	5-102617-6
△	.206	.732	.600	6	14	14	5-102617-5
△	.206	.632	.500	5	12	12	5-102617-4
△	.206	.532	.400	4	10	10	5-102617-3
△	.106	.432	.300	3	8	8	5-102617-2
△	.106	.332	.200	2	6	6	5-102617-1

PLATING	E	D	C	B	A	NO OF POSN	ASSEMBLY PART NUMBER
△	3.506	.106	3.732	3.600	36	74	AS-102617-6
△	3.406	.106	3.632	3.500	35	72	AS-102617-4
△	3.306	.106	3.532	3.400	34	70	AS-102617-3
△	3.206	.106	3.432	3.300	33	68	AS-102617-2
△	3.106	.106	3.332	3.200	32	66	AS-102617-1
△	3.006	.106	3.232	3.100	31	64	3-102617-0
△	2.906	.106	3.132	3.000	30	62	AS-102617-9
△	2.806	.106	3.032	2.900	29	60	2-102617-8
△	2.706	.106	2.932	2.800	28	58	AS-102617-7
△	2.606	.106	2.832	2.700	27	56	AS-102617-6
△	2.506	.106	2.732	2.600	26	54	AS-102617-5
△	2.406	.106	2.632	2.500	25	52	AS-102617-4
△	2.306	.106	2.532	2.400	24	50	2-102617-3
△	2.206	.106	2.432	2.300	23	48	AS-102617-2
△	2.106	.106	2.332	2.200	22	46	AS-102617-1
△	2.006	.106	2.232	2.100	21	44	AS-102617-0
△	1.906	.106	2.132	2.000	20	42	AS-102617-9
△	1.806	.106	2.032	1.900	19	40	1-102617-8
△	1.706	.106	1.932	1.800	18	38	AS-102617-7
△	1.606	.106	1.832	1.700	17	36	AS-102617-6
△	1.506	.106	1.732	1.600	16	34	1-102617-5
△	1.406	.106	1.632	1.500	15	32	1-102617-4
△	1.306	.106	1.532	1.400	14	30	1-102617-3
△	1.206	.106	1.432	1.300	13	28	AS-102617-2
△	1.106	.106	1.332	1.200	12	26	1-102617-1
△	1.006	.106	1.232	1.100	11	24	1-102617-0
△	.906	.106	1.132	1.000	10	22	102617-9
△	.806	.106	1.032	.900	9	20	102617-8
△	.406	.932	.800	.8	18	18	102617-7
△	.306	.832	.700	7	16	16	102617-6
△	.206	.732	.600	6	14	14	102617-5
△	.206	.632	.500	5	12	12	102617-4
△	.206	.532	.400	4	10	10	102617-3
△	.106	.432	.300	3	8	8	102617-2
△	.106	.332	.200	2	6	6	102617-1

RECOMMENDED HOLE LAYOUT

THIS DRAWING IS A CONTROLLED DOCUMENT.

TE Connectivity

HDR ASSY, MOD II, SHROUDED, 4 SIDES, DRG ROW, 100X100 C/L, PROFIT ANGLE 1/4" .025 SD POSTS

DATE: 11/08/11

REV: 00

ASSEMBLY PART NUMBER: A100779 (G=102617)