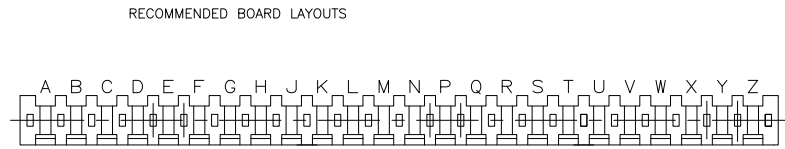
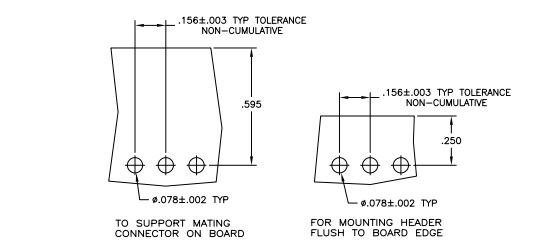
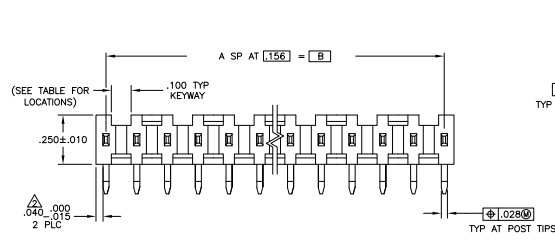
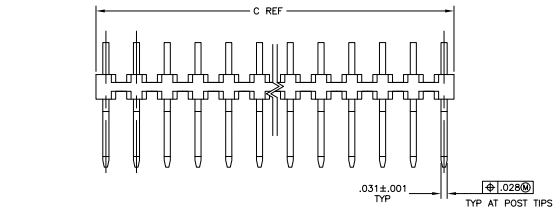


REV	DATE	DESCRIPTION	BY	CHK	APP
00					
M3		REVISED PER ECO-10-003219			



KEYWAY LOCATIONS (REF-SEE TABLE)
 (MATING LENGTH OF POST ON NEAR SIDE)
 SCALE 8:1

- △ THE TIPS OF THE POSTS WILL NOT BE PLATED
- △ THE NOTED DIMENSIONS APPLY AT THE INTERSECTION OF THE POST AND THE HOUSING
- △ .000050-.000150 BRIGHT TIN LEAD.
- △ .000050-.000150 MATTE TIN.
- △ ROHS /95 /EC/ COMPLIANT
- △ OBSOLETE PARTS: OBSOLETE CIS STREAMLINING PER D.RENAUD/D.SINISI

FINISH	KEYWAY LOCATIONS	NO OF KEYWAY	C	B	A	NO OF POSTN	ASSEMBLY PART NUMBER
△ OBSOLETE	A,C,E,H,K,M,Q,S,U,W,Y	11	3,855	3,744	24	25	7-87655-5
△	A,C,E,G,J,L,N,Q,S,U,W,Y	12	3,699	3,588	23	24	7-87655-4
△	A,D,G,K,N,R,U,X	8	3,543	3,432	22	23	7-87655-3
△	A,C,E,G,J,L,N,Q,S,U,W	11	3,387	3,276	21	22	7-87655-2
△	A,D,G,K,N,R,U	7	3,231	3,120	20	21	7-87655-1
△	A,C,E,G,J,L,N,Q,S,U	10	3,075	2,964	19	20	7-87655-0
△	B,D,F,J,L,N,Q,S	8	2,919	2,808	18	19	6-87655-9
△	A,D,F,J,M,P,S	7	2,763	2,652	17	18	6-87655-8
△	A,D,G,K,N,R	6	2,607	2,496	16	17	6-87655-7
△	A,C,E,G,J,L,N,Q	8	2,451	2,340	15	16	6-87655-6
△	A,D,G,K,N	5	2,295	2,184	14	15	6-87655-5
△	A,C,E,G,J,L,N	7	2,139	2,028	13	14	6-87655-4
△	A,D,G,K	4	1,983	1,872	12	13	6-87655-3
△	A,C,E,G,J,L	6	1,827	1,716	11	12	6-87655-2
△	A,D,G,K	4	1,671	1,560	10	11	6-87655-1
△	A,C,E,G,J	5	1,515	1,404	9	10	6-87655-0
△	A,D,G	3	1,359	1,248	8	9	6-87655-9
△	A,C,E,G	4	1,203	1,092	7	8	6-87655-8
△	A,C,E	3	1,047	936	6	7	6-87655-7
△	A,C,E	3	.891	.780	5	6	6-87655-6
△	A,D	2	.735	.624	4	5	6-87655-5
△	A,C	2	.579	.468	3	4	6-87655-4
△	A	1	.423	.312	2	3	6-87655-3
△	A	1	.267	.156	1	2	6-87655-2
△ OBSOLETE	A,C,E,H,K,M,Q,S,U,W,Y	11	3,855	3,744	24	25	2-87655-5
△	A,C,E,G,J,L,N,Q,S,U,W,Y	12	3,699	3,588	23	24	2-87655-4
△	A,D,G,K,N,R,U,X	8	3,543	3,432	22	23	2-87655-3
△	A,C,E,G,J,L,N,Q,S,U,W	11	3,387	3,276	21	22	2-87655-2
△	A,D,G,K,N,R,U	7	3,231	3,120	20	21	2-87655-1
△	A,C,E,G,J,L,N,Q,S,U	10	3,075	2,964	19	20	2-87655-0
△	B,D,F,J,L,N,Q,S	8	2,919	2,808	18	19	1-87655-9
△	A,D,F,J,M,P,S	7	2,763	2,652	17	18	1-87655-8
△	A,D,G,K,N,R	6	2,607	2,496	16	17	1-87655-7
△	A,C,E,G,J,L,N,Q	8	2,451	2,340	15	16	1-87655-6
△	A,D,G,K,N	5	2,295	2,184	14	15	1-87655-5
△	A,C,E,G,J,L,N	7	2,139	2,028	13	14	1-87655-4
△	A,D,J,M	4	1,983	1,872	12	13	1-87655-3
△	A,C,E,G,J,L	6	1,827	1,716	11	12	1-87655-2
△	A,D,G,K	4	1,671	1,560	10	11	1-87655-1
△	A,C,E,G,J	5	1,515	1,404	9	10	1-87655-0
△	A,D,G	3	1,359	1,248	8	9	87655-9
△	A,C,E,G	4	1,203	1,092	7	8	87655-8
△	A,C,E	3	1,047	936	6	7	87655-7
△	A,C,E	3	.891	.780	5	6	87655-6
△	A,D	2	.735	.624	4	5	87655-5
△	A,C	2	.579	.468	3	4	87655-4
△	A	1	.423	.312	2	3	87655-3
△	A	1	.267	.156	1	2	87655-2

THIS DRAWING IS A CONTROLLED DOCUMENT. IT IS THE PROPERTY OF TYS ELECTRONICS CORPORATION. IT IS TO BE KEPT IN CONFIDENCE AND NOT TO BE REPRODUCED OR TRANSMITTED IN ANY FORM OR BY ANY MEANS, ELECTRONIC OR MECHANICAL, INCLUDING PHOTOCOPYING, RECORDING, OR BY ANY INFORMATION STORAGE AND RETRIEVAL SYSTEM, WITHOUT THE WRITTEN PERMISSION OF TYS ELECTRONICS CORPORATION.

DATE: 108-25016
 DRAWN BY: J. SCHIFFER
 CHECKED BY: J. SCHIFFER
 APPROVED BY: J. SCHIFFER

Customer Drawing: A100779 (G-87655)
 Scale: 4:1