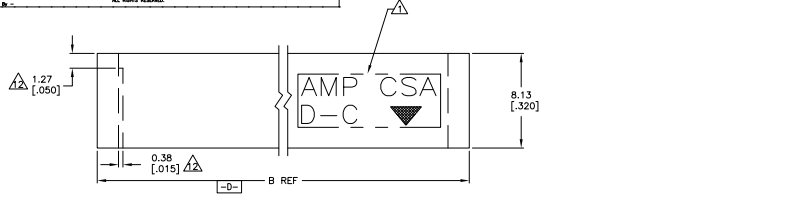
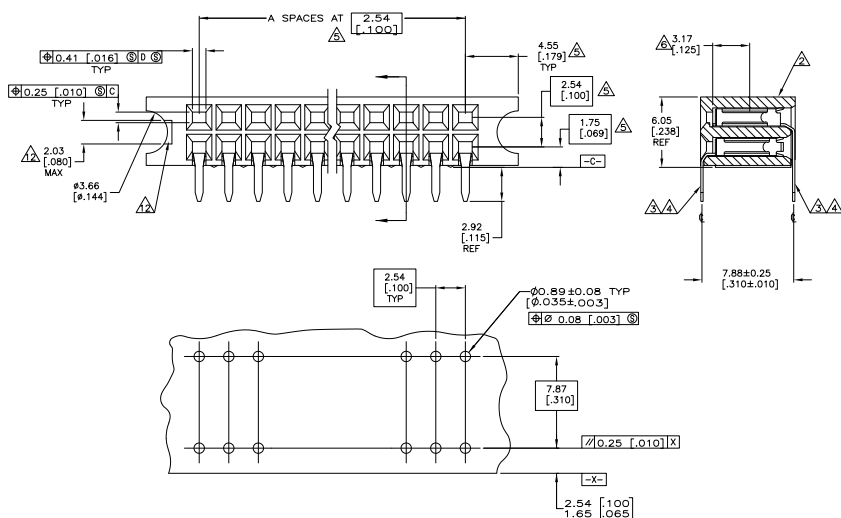


THIS DRAWING IS UNPUBLISHED  
 ALL RIGHTS RESERVED

REV	DATE	DESCRIPTION	BY	CHK	APP
AD 39	T4	REVISED PER ECO-11-004587	11MM11	AK	HMR



- △1 CONTACT FINISH: DUPLEX PLATED 0.00038 [0.00015] GOLD IN CONTACT AREA, 0.00127-0.00254 [0.00050-0.00100] BRIGHT TIN-LEAD ON SOLDER TAILS, ALL OVER 0.00127 [0.00050] NICKEL.
- △2 RECESSED AREA AROUND MOLD GATE IS OPTIONAL. THIS FEATURE IS ALLOWABLE ON EITHER SIDE OF HOUSING OR MAY NOT BE PRESENT AT ALL.
- △3 OBSOLETE PARTS: OBSOLETE CIS STREAMLINING PER D.RENAUD/D.SINISI



RECOMMENDED P.C. BOARD HOLE LAYOUT

- △ "AMP", "CSA", "▼" AND "DATE CODE" WITH .062 ±0.015 HIGH CHARACTERS WHERE SIZE PERMITS.
- △ HOUSING: 1-70 POSITION SIZES MAY BE PPS, GLASS-FILLED OR PCT, GLASS-FILLED POSITION SIZES GREATER THAN 70 WILL BE PPS, GLASS-FILLED.
- △ CONTACT: PHOSPHOR BRONZE.
- △ CONTACT FINISH: DUPLEX PLATED 0.00038 [0.00015] GOLD IN CONTACT AREA, 0.00127-0.00254 [0.00050-0.00100] BRIGHT TIN-LEAD ON SOLDER TAILS, ALL OVER 0.00127 [0.00050] NICKEL.
- △ THESE DIMENSIONS PERTAIN TO CAVITY ♀S ONLY, NOT TO CONTACT LOCATIONS.
- △ POINT OF MEASUREMENT FOR PLATING THICKNESS (INSIDE CONTACT BEAMS).
- △ 7. CSA LOGO INK STAMPED WHITE ON HOUSING.
- △ CONTACT FINISH: DUPLEX PLATED 0.00038 [0.00015] GOLD IN CONTACT AREA, 0.00127-0.00254 [0.00050-0.00100] BRIGHT TIN ON SOLDER TAILS, ALL OVER 0.00127 [0.00050] NICKEL.
- △ SUPERSEDED BY 5-532955-1.
- △ ROHS 2002/95/EC COMPLIANT

OBSOLETE	FINISH	B	A	NO OF POSN	PART NUMBER	OBSOLETE	FINISH	B	A	NO OF POSN	PART NUMBER	10	5	12	3-532955-2
												△	△	△	△
												19.25 [0.758]	4	10	3-532955-1
												34.49 [1.358]	10	22	3-532955-0
												47.19 [1.858]	15	32	2-532956-9
												9.258 [0.368]	89	180	2-532955-8
												235.15 [9.293]	79	160	2-532955-7
												25.93 [1.018]	46	94	2-532955-6
												24.33 [0.958]	6	14	2-532955-5
												62.43 [2.458]	21	44	2-532955-4
												194.51 [7.658]	73	148	2-532955-3
												184.35 [7.258]	69	140	2-532955-2
												17.85 [0.703]	64	130	2-532955-1
												169.11 [6.658]	63	128	1-532955-9
												158.95 [6.258]	59	120	1-532955-8
												146.25 [5.758]	54	110	1-532955-7
												133.55 [5.258]	49	100	1-532955-6
												128.47 [5.058]	47	96	1-532955-5
												120.85 [4.758]	44	90	1-532955-4
												113.23 [4.458]	42	86	1-532955-3
												108.15 [4.258]	39	80	1-532955-2
												97.99 [3.858]	35	72	1-532955-1
												85.85 [3.358]	34	70	1-532955-0
												82.75 [3.258]	29	60	532955-9
												70.65 [2.758]	24	50	532955-8
												67.38 [2.658]	19	40	532955-7
												52.27 [2.058]	17	36	532955-6
												44.85 [1.758]	14	30	532955-5
												37.03 [1.458]	11	24	532955-4
												31.95 [1.258]	9	20	532955-3
												26.87 [1.058]	7	16	532955-2
												21.79 [0.858]	5	12	532955-1

THIS DRAWING IS A CONTROLLED DOCUMENT. DATE: 11/11/08 BY: VVA/TE CONNECTIVITY

DESIGNED BY: [ ] CHECKED BY: [ ] DATE: [ ]

APPROVED BY: [ ] DATE: [ ]

PROJECT NAME: RECEPTACLE ASSY, MOD II, DBL ROW, 2.54 X 2.54 [100 X 100] CL.

SIZE: SOURCE P/N ENDS, CLOSED ENTRY.

REV: [ ] DATE: [ ] DRAWING NO: [ ]

CUSTOMER DRAWING: [ ]

SCALE: 6:1 SHEET: 1 OF 1