

4

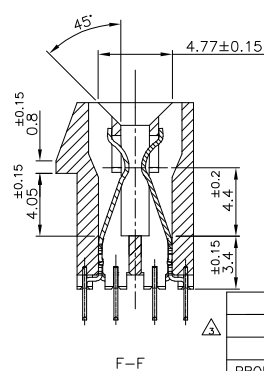
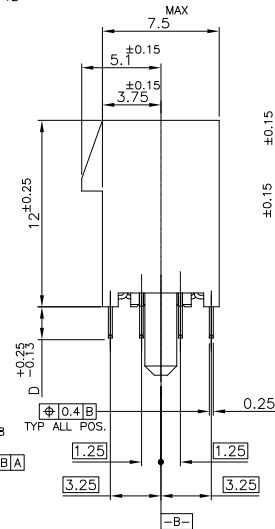
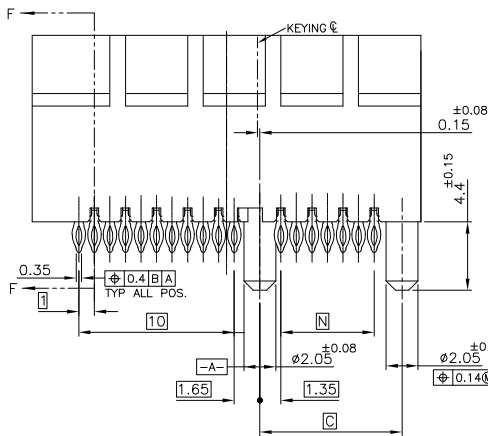
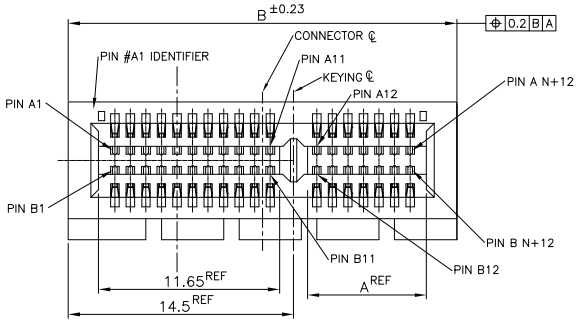
3

2

1

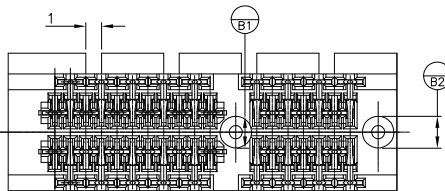
THIS DRAWING IS UNPUBLISHED. RELEASED FOR PUBLICATION JUN. 2005.
 © COPYRIGHT 2005 BY TYCO ELECTRONICS CORPORATION. ALL RIGHTS RESERVED.

LOC		DIST		REVISIONS			
P	LTR	DESCRIPTION		DATE	DWN	APVD	
A		RELEASED		14NOV06	T.K	K.I	



- △ MATERIAL:
HOUSING: HIGH TEMPERATURE THERMO PLASTIC
UL94V-0, COLOR; BLACK
CONTACT: COPPER ALLOY
- △ FINISH:
CONTACT AREA: GOLD PL. 0.76 μm MIN OVER NICKEL PL.
COMPLIANT PIN ACTION AREA: 0.5 μm MIN MATTE TIN OVER NICKEL PL.
- △ NOT SPECIFY BY PCI EXPRESS STANDARD
- △ THESE PARTS ARE PRELIMINARY, AND NOT TOOLED.
- △ FINISH:
CONTACT AREA: GOLD PL. 0.76 μm MIN OVER NICKEL PL.
COMPLIANT PIN ACTION AREA: 0.5 μm MIN BRIGHT TIN-LEAD OVER NICKEL PL.

	37	40.15	56	38.65	98	8	3-	-3
	128	131.15	147	129.65	280	16	1-	-5
PRODUCING	37	3.25	40.15	56	38.65	98	8	1-
	20	23.15	39	21.65	64	4	1-	-2
PRELIMINARY	6	3.25	9.15	25	7.65	36	1	-1
	128	131.15	147	129.65	280	16	1-	-5
PRODUCING	37	2.0	40.15	56	38.65	98	8	1939178-3
	20	23.15	39	21.65	64	4	1-	-2
PRELIMINARY	6	2.0	9.15	25	7.65	36	1	1939178-1
TOOLING STATUS	N	D	C	B	A	POS	PORT	P/N



THIS DRAWING IS A CONTROLLED DOCUMENT.

DIMENSIONS:	TOLERANCES UNLESS OTHERWISE SPECIFIED:
単位: 概	一般公差
MM	±0.3
0-PLC	±
1-PLC	±
2-PLC	±
3-PLC	±
4-PLC	±
ANGLES	±
MATERIAL	FINISH
材料	仕上

SEE NOTE 2

DWN T. KATANO
 CHK K. IKEGAMI
 APVD K. IKEGAMI
 PRODUCT SPEC 108-78340
 APPLICATION SPEC
 取付適用規格

Tyco Electronics AMP K.K.
 Kawasaki, Japan

NAME 名称
 PCI EXPRESS CARD EDGE CONN.
 WITH COMPLIANT PIN V-TYPE

SIZE A3 CAGE CODE 00779 DRAWING NO 1939178
 番号

RESTRICTED TO

CUSTOMER DRAWING SCALE 4:1 SHEET 1 OF 2 REV A

4

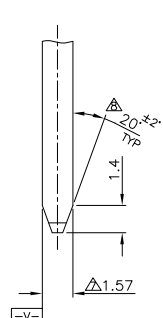
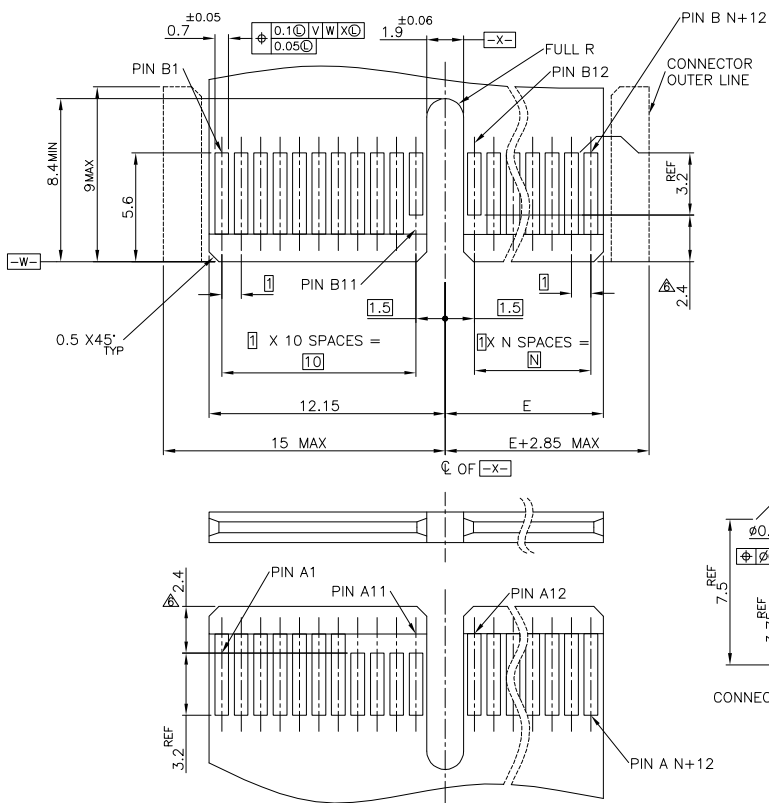
3

2

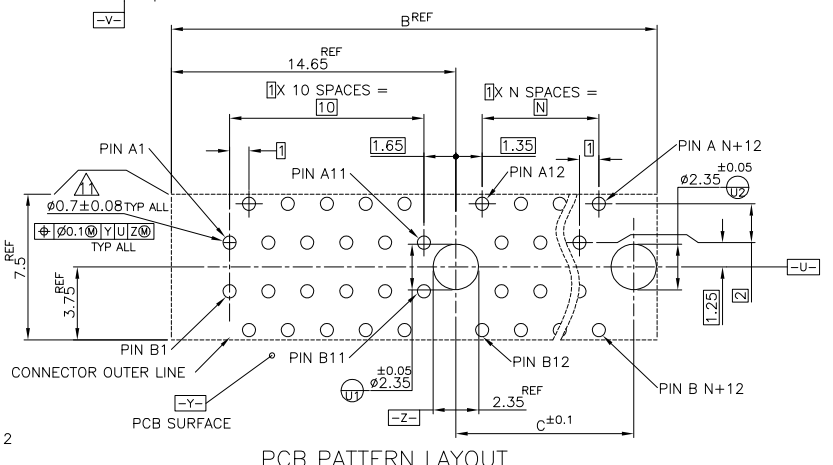
1

THIS DRAWING IS UNPUBLISHED. RELEASED FOR PUBLICATION MAR. 2005.
 © COPYRIGHT 2005 BY TYCO ELECTRONICS CORPORATION. ALL RIGHTS RESERVED.

LOC	DIST	REVISIONS			
P	LTR	DESCRIPTION	DATE	DWN	APVD
-		SEE SHEET 1	-	-	-



THIS DIMENSION IS ONLY APPLIED TO PRSNT PINS.
 CARD THICKNESS APPLIES ACROSS TABS AND INCLUDES PLATING AND/OR METALIZATION.
 CHAMFER EDGES MUST BE FREE OF CUTTING BURRS.
 NO TIE BAR PERMITTED FROM CARD EDGE TO LEADING EDGE OF PAD FOR PRSNT PIN.
 APPLICATION NOTE:
 GOLD CONTACT PAD : ELECTROLESS GOLD PLATING 0.05μm MIN. OVER ELECTROLESS Ni PLATING 2μm MIN.
 DRILLED HOLE DIA.: 0.77 TO 0.83
 COPPER PLATING: 0.025 TO 0.075mm.
 FINISHED HOLE DIA. AFTER PLATING: 0.62 TO 0.78 DIA.



MODULE LAYOUT(MATING PART ONLY)

NOT SPECIFY BY PCI EXPRESS STANDARD

	130.15	131.15	147	128	280
A8,A9,A10,A11,B11,B12	72.15	73.15	89	70	164
	39.15	40.15	56	37	98
	22.15	23.15	39	20	64
	8.15	9.15	25	6	36
PRSNT PIN	E	C	B	N	POS. PORT

THIS DRAWING IS A CONTROLLED DOCUMENT.

DIMENSIONS: 単位: 概 MM	TOLERANCES UNLESS OTHERWISE SPECIFIED: 一般公差
0-PLC	±0.13
1-PLC	±0.13
2-PLC	±0.13
3-PLC	±0.13
4-PLC	±0.13
ANGLES	±0.13
FINISH 仕上	

DWN	CHK	APVD	PRODUCT SPEC	APPLICATION SPEC	WEIGHT	CUSTOMER DRAWING
Tyco Electronics			Tyco Electronics AMP K.K. Kawasaki, Japan			
NAME 名称			PCI EXPRESS CARD EDGE CONN. WITH COMPLIANT PIN V-TYPE			
SIZE	CAGE CODE	DRAWING NO 番号	RESTRICTED TO			
A3	00779	C=1939178	-			
SCALE 尺度			SHEET 2		REV A	

AMP 1470-19 REV 31MAR2000