

4

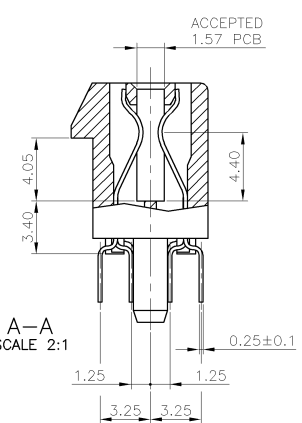
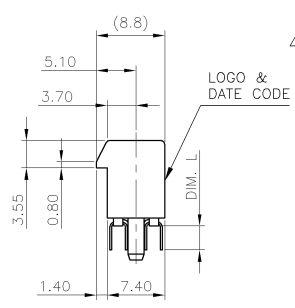
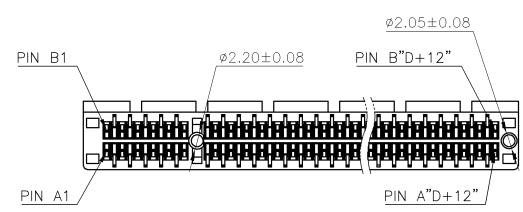
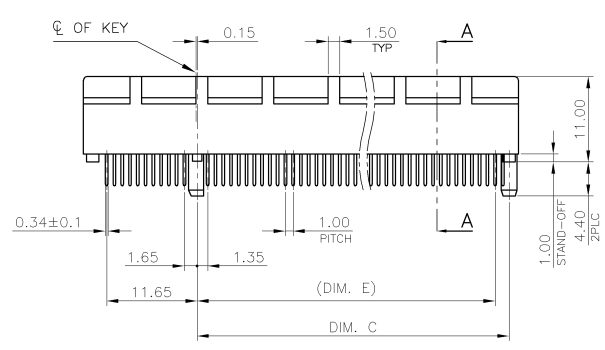
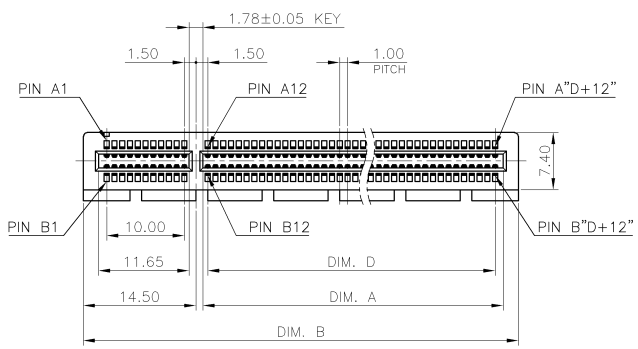
3

2

1

THIS DRAWING IS UNPUBLISHED. RELEASED FOR PUBLICATION AUG. 2006.
 COPYRIGHT - BY TYCO ELECTRONICS CORPORATION. ALL RIGHTS RESERVED.

LOC	DIST	REVISIONS			
P	LTR	DESCRIPTION	DATE	DWN	APVD
F4		REVISED (ECR-11-008017) DRAWING REDRAW & REVISED PRODUCT SPEC TO 108-57871	19APR'11	E.L.	W.K.



- NOTES:
- MATERIAL:
 - HOUSING: 1.PA46 WITH 40% G.F, UL94 V-0, COLOR: SEE TABLE.
 - PA9T WITH 30% GF, UL94 V-0, COLOR: SEE TABLE.
 - CONTACT: PHOSPHOR BRONZE
 - FINISH:
 - CONTACT: (SEE TABLE) GOLD PLATING ON CONTACT AREA.
 - 2.54um [100u"] MIN. MATTE-TIN PLATING ON SOLDER TAIL AREA.
 - 1.27um [50u"] MIN. NICKEL UNDERPLATING OVERALL.
 - CONNECTOR HAS MET THE REQUIREMENTS PER PCI EXPRESS GEN 2 TECHNICAL DOCUMENT.
 - WEIGHT:
 - 36 POS.: 2.55 GRAMS; 64 POS.: 3.90 GRAMS
 - 98 POS.: 5.50 GRAMS; 164 POS.: 8.80 GRAMS
 - WAVE SOLDER CAPABLE TO 265°C PER TEST SPEC. 109-202 CONDITION B.
 - REFLOW SOLDER CAPABLE TO 260°C PER TEST SPEC. 109-201 CONDITION B. (REFLOW SOLDERING PLEASE USE PN : 1734774-1 TO 4-1734774-8)

THIS DRAWING IS A CONTROLLED DOCUMENT.		DWN	B. HSING	15JUL2009		TE Connectivity	
DIMENSIONS: MM		CHK	S. CHIEN	15JUL2009		NAME	
TOLERANCES UNLESS OTHERWISE SPECIFIED:		APVD	W. KODAMA	15JUL2009	PRODUCT SPEC		
0 PLC ±		108-57871		APPLICATION SPEC			
1 PLC ±0.3		WEIGHT		SEE NOTE 4		RESTRICTED	
2 PLC ±0.2		SIZE		A3 00779		DRAWING NO	
3 PLC ±0.15		CAGE CODE		C-1734774		SHEET	
4 PLC ±		DRAWING NO		1734774		1 of 4	
ANGLES ± 3°		CUSTOMER DRAWING		SCALE		REV F4	
MATERIAL		SEE NOTE		SHEET		REV	

AMP 1470-19 REV 31MAR2000

4

3

2

1

THIS DRAWING IS UNPUBLISHED. RELEASED FOR PUBLICATION AUG. 2006.
 © COPYRIGHT - BY TYCO ELECTRONICS CORPORATION. ALL RIGHTS RESERVED.

LOC	DIST	REVISIONS			
P	LTR	DESCRIPTION	DATE	DWN	APVD
SEE SHEET 1.					

WEIGHT(g)	HOUSING MATERIAL	DIM. L	DIM. E	DIM. D	DIM. C	DIM. B	DIM. A	POS.	HOUSING COLOR	MIN. GOLD THICKNESS	PART NUMBER		
8.7	PA9T	71.35	70	73.15	89	71.65	164		BLACK	15u"	4-1734774-8		
5.45		38.35	37	40.15	56	38.65	98		WHITE	G/F	4-1734774-7		
3.85		21.35	20	23.15	39	21.65	64		BLACK	15u"	4-1734774-5		
2.55		7.35	6	9.15	25	7.65	36		WHITE	G/F	4-1734774-3		
8.7		2.30	71.35	70	73.15	89	71.65	164		BLACK	15u"	4-1734774-2	
5.45			38.35	37	40.15	56	38.65	98		WHITE	G/F	4-1734774-1	
3.85			21.35	20	23.15	39	21.65	64		BLACK	15u"	3-1734774-0	
2.55			7.35	6	9.15	25	7.65	36		WHITE	G/F	3-1734774-3	
8.7			3.10	71.35	70	73.15	89	71.65	164		BLACK	15u"	3-1734774-2
5.45				38.35	37	40.15	56	38.65	98		WHITE	G/F	3-1734774-1
3.85				21.35	20	23.15	39	21.65	64		BLACK	15u"	2-1734774-0
2.55				7.35	6	9.15	25	7.65	36		WHITE	G/F	2-1734774-3
8.7	30u"			71.35	70	73.15	89	71.65	164		BLACK	15u"	2-1734774-4
5.45				38.35	37	40.15	56	38.65	98		WHITE	G/F	2-1734774-3
3.85				21.35	20	23.15	39	21.65	64		BLACK	15u"	2-1734774-2
2.55				7.35	6	9.15	25	7.65	36		WHITE	G/F	2-1734774-1
8.7		30u"		71.35	70	73.15	89	71.65	164		BLACK	15u"	1-1734774-0
5.45				38.35	37	40.15	56	38.65	98		WHITE	G/F	1-1734774-3
3.85				21.35	20	23.15	39	21.65	64		BLACK	15u"	1-1734774-2
2.55				7.35	6	9.15	25	7.65	36		WHITE	G/F	1-1734774-1
8.7			30u"	71.35	70	73.15	89	71.65	164		BLACK	15u"	1-1734774-8
5.45				38.35	37	40.15	56	38.65	98		WHITE	G/F	1-1734774-7
3.85				21.35	20	23.15	39	21.65	64		BLACK	15u"	1-1734774-6
2.55				7.35	6	9.15	25	7.65	36		WHITE	G/F	1-1734774-5

WEIGHT(g)	HOUSING MATERIAL	DIM. L	DIM. E	DIM. D	DIM. C	DIM. B	DIM. A	POS.	HOUSING COLOR	MIN. GOLD THICKNESS	PART NUMBER		
8.8	PA46	71.35	70	73.15	89	71.65	164		BLACK	15u"	9-1734774-7		
5.5		38.35	37	40.15	56	38.65	98		WHITE	G/F	9-1734774-6		
3.9		21.35	20	23.15	39	21.65	64		BLACK	15u"	9-1734774-5		
2.55		7.35	6	9.15	25	7.65	36		WHITE	G/F	9-1734774-4		
8.8		2.30	71.35	70	73.15	89	71.65	164		BLACK	15u"	8-1734774-9	
5.5			38.35	37	40.15	56	38.65	98		WHITE	G/F	8-1734774-8	
3.9			21.35	20	23.15	39	21.65	64		BLACK	15u"	8-1734774-7	
2.55			7.35	6	9.15	25	7.65	36		WHITE	G/F	8-1734774-6	
8.8			30u"	71.35	70	73.15	89	71.65	164		BLACK	15u"	8-1734774-5
5.5				38.35	37	40.15	56	38.65	98		WHITE	G/F	8-1734774-4
3.9				21.35	20	23.15	39	21.65	64		BLACK	15u"	8-1734774-3
2.55				7.35	6	9.15	25	7.65	36		WHITE	G/F	8-1734774-2
8.8	3.10			71.35	70	73.15	89	71.65	164		BLACK	15u"	8-1734774-1
5.5				38.35	37	40.15	56	38.65	98		WHITE	G/F	8-1734774-0
3.9				21.35	20	23.15	39	21.65	64		BLACK	15u"	7-1734774-9
2.55				7.35	6	9.15	25	7.65	36		WHITE	G/F	7-1734774-8
8.8		30u"		71.35	70	73.15	89	71.65	164		BLACK	15u"	7-1734774-7
5.5				38.35	37	40.15	56	38.65	98		WHITE	G/F	7-1734774-6
3.9				21.35	20	23.15	39	21.65	64		BLACK	15u"	7-1734774-5
2.55				7.35	6	9.15	25	7.65	36		WHITE	G/F	7-1734774-4
8.8			3.10	71.35	70	73.15	89	71.65	164		BLACK	15u"	7-1734774-3
5.5				38.35	37	40.15	56	38.65	98		WHITE	G/F	7-1734774-2
3.9				21.35	20	23.15	39	21.65	64		BLACK	15u"	7-1734774-1
2.55				7.35	6	9.15	25	7.65	36		WHITE	G/F	7-1734774-0
8.8	3.10			71.35	70	73.15	89	71.65	164		BLACK	15u"	6-1734774-9
5.5				38.35	37	40.15	56	38.65	98		WHITE	G/F	6-1734774-8
3.9				21.35	20	23.15	39	21.65	64		BLACK	15u"	6-1734774-7
2.55				7.35	6	9.15	25	7.65	36		WHITE	G/F	6-1734774-6
8.8		3.10		71.35	70	73.15	89	71.65	164		BLACK	15u"	6-1734774-5
5.5				38.35	37	40.15	56	38.65	98		WHITE	G/F	6-1734774-4
3.9				21.35	20	23.15	39	21.65	64		BLACK	15u"	6-1734774-3
2.55				7.35	6	9.15	25	7.65	36		WHITE	G/F	6-1734774-2
8.8			3.10	71.35	70	73.15	89	71.65	164		BLACK	15u"	6-1734774-1
5.5				38.35	37	40.15	56	38.65	98		WHITE	G/F	6-1734774-0
3.9				21.35	20	23.15	39	21.65	64		BLACK	15u"	5-1734774-9
2.55				7.35	6	9.15	25	7.65	36		WHITE	G/F	5-1734774-8
8.8	3.10			71.35	70	73.15	89	71.65	164		BLACK	15u"	5-1734774-7
5.5				38.35	37	40.15	56	38.65	98		WHITE	G/F	5-1734774-6
3.9				21.35	20	23.15	39	21.65	64		BLACK	15u"	5-1734774-5
2.55				7.35	6	9.15	25	7.65	36		WHITE	G/F	5-1734774-4
8.8		3.10		71.35	70	73.15	89	71.65	164		BLACK	15u"	5-1734774-3
5.5				38.35	37	40.15	56	38.65	98		WHITE	G/F	5-1734774-2
3.9				21.35	20	23.15	39	21.65	64		BLACK	15u"	5-1734774-1
2.55				7.35	6	9.15	25	7.65	36		WHITE	G/F	5-1734774-0

THIS DRAWING IS A CONTROLLED DOCUMENT.

DIMENSIONS: MM	TOLERANCES UNLESS OTHERWISE SPECIFIED:	DWN	CHK	APVD	NAME
	0 PLC ± -	PRODUCT SPEC	TE Connectivity PCI EXPRESS CARD EDGE CONNECTOR VERTICAL, DIP TYPE, 3GIO		
	1 PLC ± 0.3	APPLICATION SPEC			
	2 PLC ± 0.2	WEIGHT			
	3 PLC ± 0.15	CUSTOMER DRAWING			
4 PLC ± -	FINISH	SIZE	CAGE CODE	DRAWING NO	RESTRICTED 30
ANGLES ± 3°		A3	00779	C-1734774	
MATERIAL		SCALE	SHEET	2 OF 4	REV F4

4

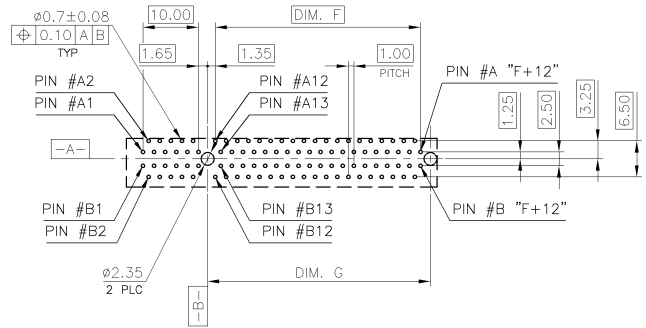
3

2

1

THIS DRAWING IS UNPUBLISHED. RELEASED FOR PUBLICATION AUG. 2006.
 COPYRIGHT BY TYCO ELECTRONICS CORPORATION. ALL RIGHTS RESERVED.

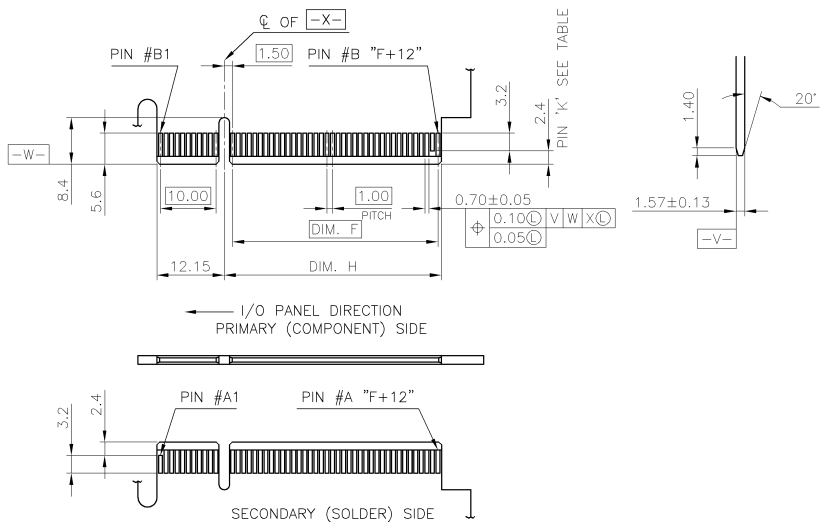
LOC	DIST	REVISIONS			
P	LTR	DESCRIPTION	DATE	DWN	APVD
DW		SEE SHEET 1.			



RECOMMENDED PCB LAYOUT
 TOLERANCE: ±0.05
 FOR DIM.L=3.1mm PCB THICKNESS: 2.4mm
 FOR DIM.L=2.3mm PCB THICKNESS: 1.6mm

ADD-IN CARD EDGE-FINGER DIMENSIONS

NOTES:
 CHAMFER EDGE MUST BE FREE OF CUTTING BURRS



164	70.0	73.15	72.15	B17, B31, B48, B81
98	37.0	40.15	39.15	B17, B31, B48
64	20.0	23.15	22.15	B17, B31
36	6.0	9.15	8.15	B17
POS.	DIM. F	DIM. G	DIM. H	"K"

THIS DRAWING IS A CONTROLLED DOCUMENT.		DWN	TE Connectivity	
DIMENSIONS:	TOLERANCES UNLESS OTHERWISE SPECIFIED:	CHK	NAME	
MM	0 PLC ± -	APVD	PCI EXPRESS CARD EDGE CONNECTOR VERTICAL, DIP TYPE, 3GIO	
	1 PLC ± -	PRODUCT SPEC	SIZE	CAGE CODE
	2 PLC ± -	APPLICATION SPEC	A3	00779
	3 PLC ± -	WEIGHT	DRAWING NO. C-1734774	
	4 PLC ± -	CUSTOMER DRAWING	RESTRICTED TO	
MATERIAL	FINISH	SCALE	SHEET 3 of 4 REV F4	

4

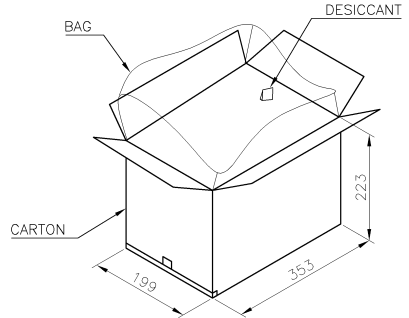
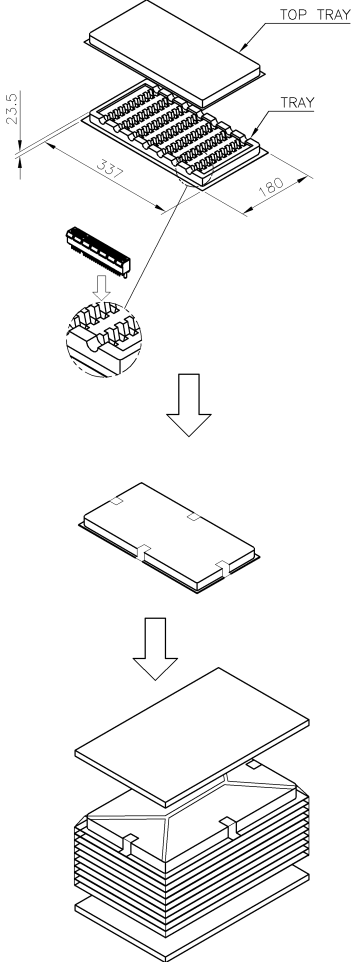
3

2

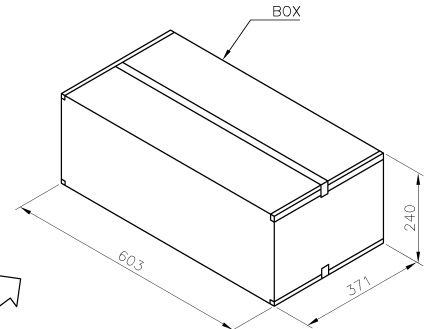
1

THIS DRAWING IS UNPUBLISHED. RELEASED FOR PUBLICATION AUG. 2006.
 © COPYRIGHT BY TYCO ELECTRONICS CORPORATION. ALL RIGHTS RESERVED.

LOC		DIST		REVISIONS			
P	LTR	DESCRIPTION	DATE	DWN	APVD		
SEE SHEET 1.							



- NOTES :
- MATERIAL :
 TRAY : PVC, COLOR: TRANSPARENT.
 CARTON: CORRUGATED FIBER
 BOX : CORRUGATED FIBER
 - DIMENSION :
 TRAY: SEE DRAWING
 CARTON: SEE DRAWING
 BOX : SEE DRAWING
 - QUANTITY : SEE TABLE
 - WEIGHT : SEE TABLE



GROSS WEIGHT	NET WEIGHT	PCS/ TRAY	TRAY/ CARTON	CARTON/ BOX	PCS/ BOX	POS.
10.2 Kg	8.2 Kg	30	10	3	900	164
9.0 Kg	7.0 Kg	40	10	3	1200	98
8.5 Kg	6.5 Kg	60	10	3	1800	64
7.6 Kg	5.6 Kg	70	10	3	2100	36

THIS DRAWING IS A CONTROLLED DOCUMENT.

DIMENSIONS:	TOLERANCES UNLESS OTHERWISE SPECIFIED:	DWN
MM	0 PLC ± -	CHK
	1 PLC ± -	APVD
	2 PLC ± -	PRODUCT SPEC
	3 PLC ± -	APPLICATION SPEC
	4 PLC ± -	WEIGHT
MATERIAL	ANGLES ± -	CUSTOMER DRAWING
	FINISH	

STE TE Connectivity

NAME: PCI EXPRESS CARD EDGE CONNECTOR VERTICAL, DIP TYPE, 3GIO

SIZE: A3 CAGE CODE: 00779 DRAWING NO: 1734774 RESTRICTED TO

SCALE: SHEET 4 OF 4 REV: F4