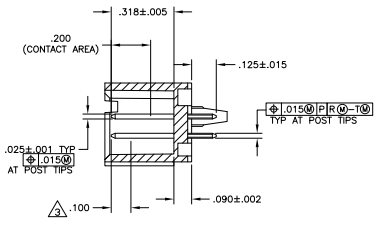
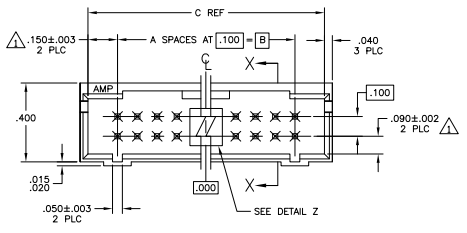
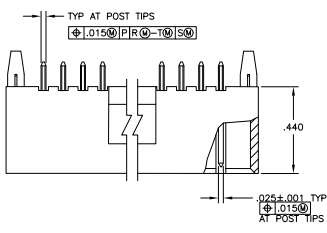
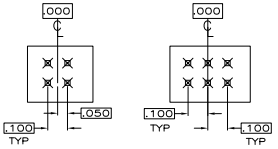
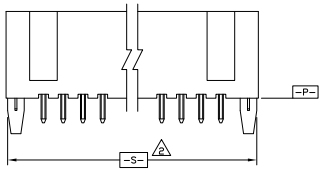


THIS DRAWING IS UNPUBLISHED
 UNLESS OTHERWISE SPECIFIED
 ALL RIGHTS RESERVED

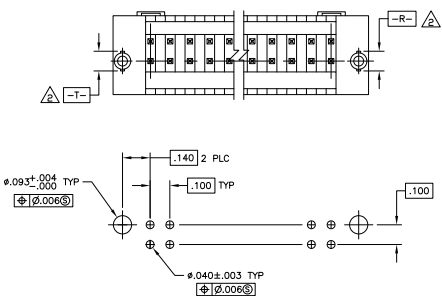
REV	DATE	DESCRIPTION	BY	CHK	APP
AD	00				
K2		REVISED PER EDD-11-004917			11MR11 RK HMR



SECTION X-X



DETAIL Z



RECOMMENDED HOLE LAYOUT

- △ THE NOTED DIMENSIONS APPLY AT THE INTERSECTION OF THE POST AND HOUSING
- △ THE NOTED DIMENSIONS APPLY AT THE INTERSECTION WITH DATUM **P**
- △ POINT OF MEASUREMENT FOR PLATING THICKNESS
- △ PRELIMINARY PART - NOT RELEASED FOR PRODUCTION.
- △ MATERIAL: HOUSING- FLAME RETARDANT THERMOPLASTIC, COLOR- BLACK
POST- PHOS BRONZE
- △ FINISH: POST- .00015 GOLD IN CONTACT AREA,
.000100-.000200 MATTE TIN-LEAD ON SOLDERTAIL,
ALL OVER .000050 NICKEL
- △ FINISH: POST- .00015 GOLD IN CONTACT AREA,
.000100-.000200 MATTE TIN ON SOLDERTAIL,
ALL OVER .000050 NICKEL
- △ OBSOLETE PARTS: OBSOLETE CIS STREAMLINING PER D.RENAUD/D.SINISI

REV	DATE	DESCRIPTION	BY	CHK	APP
△ OBSOLETE	1.900	1.600	16	34	6-104317-8
△ OBSOLETE	2.000	1.700	17	36	6-104317-7
	1.000	.700	7	16	6-104317-6
	2.300	2.000	20	42	6-104317-5
△ OBSOLETE	2.700	2.400	24	50	6-104317-4
△ OBSOLETE	2.600	2.300	23	49	6-104317-3
△ OBSOLETE	2.200	1.900	19	40	6-104317-2
	1.800	1.500	15	32	6-104317-1
	1.700	1.400	14	30	6-104317-0
△ OBSOLETE	1.500	1.200	12	26	5-104317-9
	1.400	1.100	11	24	5-104317-8
	1.300	1.000	10	22	5-104317-7
	1.200	.900	9	20	5-104317-6
△ OBSOLETE	1.100	.800	8	18	5-104317-5
	.900	.600	6	14	5-104317-4
	.800	.500	5	12	5-104317-3
	.700	.400	4	10	5-104317-2
	.500	.200	2	6	5-104317-1
	.600	.300	3	8	△ 1-104317-9
△ OBSOLETE	1.900	1.600	16	34	1-104317-8
△ OBSOLETE	2.000	1.700	17	36	1-104317-7
	1.000	.700	7	16	1-104317-6
	2.300	2.000	20	42	1-104317-5
△ OBSOLETE	2.700	2.400	24	50	1-104317-4
△ OBSOLETE	2.600	2.300	23	48	1-104317-3
	2.200	1.900	19	40	1-104317-2
	1.800	1.500	15	32	1-104317-1
△ SUPERSEDED BY 6-104317-0	1.700	1.400	14	30	1-104317-0
	1.500	1.200	12	26	104317-9
	1.400	1.100	11	24	104317-8
△ SUPERSEDED BY 5-104317-7	1.300	1.000	10	22	104317-7
△ SUPERSEDED BY 5-104317-5	1.200	.900	9	20	104317-6
	1.100	.800	8	18	104317-5
△ OBSOLETE	.900	.600	6	14	104317-4
△ SUPERSEDED BY 5-104317-3	.800	.500	5	12	104317-3
	.700	.400	4	10	104317-2
△ SUPERSEDED BY 5-104317-1	.500	.200	2	6	104317-1

PLATING C B A NO OF POSN ASSEMBLY PART NUMBER

THIS DRAWING IS A CONTROLLED DOCUMENT. DATE 10-18-97 BY EDDO 10-18-97

TE Connectivity

PROJECT NAME HDR ASSY, MOD II, SHROUDED, 4 SIDES, DBL ROW, VERTICAL, .100X100 CL, WITH .025 SQ POSTS

DATE SIZE DRAWING NO. REV. REWORKED TO

DATE SIZE DRAWING NO. REV. REWORKED TO

CUSTOMER DRAWING A100779 104317 DATE 4.1 SHEET 1 OF 1 K2