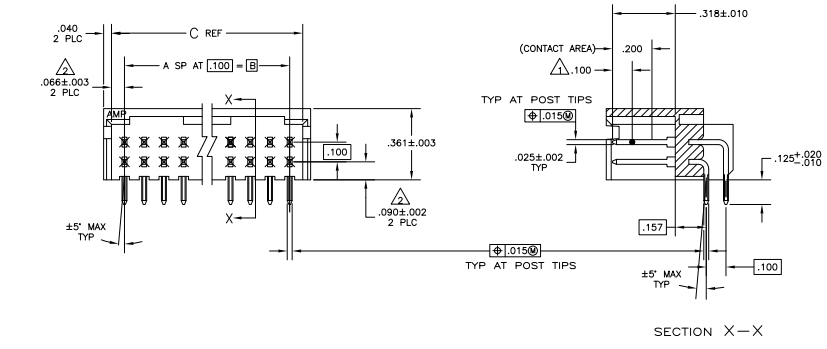


REV	DATE	DESCRIPTION	BY	CHK
00				
H2		REVISED PER ECO-11-004820	11MMR11	RK HMR



- △ POINT OF MEASUREMENT FOR PLATING THICKNESS.
- △ THE NOTED DIMENSION APPLIES AT THE INTERSECTION OF THE POST AND HOUSING
- △ .000030 GOLD IN CONTACT AREA .000100-.000200 MATTE TIN-LEAD ON SOLDER TAIL, ALL OVER .000050 NICKEL
- △ .000030 GOLD IN CONTACT AREA .000100-.000200 MATTE TIN ON SOLDER TAIL, ALL OVER .000050 NICKEL
- △ OBSOLETE PARTS: OBSOLETE CIS STREAMLINING PER D.RENAUD/D.SINSI

REV	DATE	DESCRIPTION	BY	CHK
△		3.032 2.900 29 60	7	103164-6
△		2.632 2.500 25 52	7	103164-4
△		2.632 2.400 24 50	7	103164-3
△		2.032 1.900 19 40	6	103164-5
△		1.732 1.600 16 34	6	103164-5
△		1.532 1.400 14 30	6	103164-3
△		1.332 1.200 12 26	6	103164-1
△		1.232 1.100 11 24	6	103164-0
△		1.032 .900 9 20	5	103164-8
△		.932 .800 8 18	5	103164-7
△		.832 .700 7 16	5	103164-6
△		.732 .600 6 14	5	103164-5
△		.632 .500 5 12	5	103164-4
△		.532 .400 4 10	5	103164-3
△		.432 .300 3 8	5	103164-2
△		.332 .200 2 6	5	103164-1
△		3.732 3.600 36 74	3	103164-5
△		3.632 3.500 35 72	3	103164-4
△		3.532 3.400 34 70	3	103164-3
△		3.432 3.300 33 68	3	103164-2
△		3.332 3.200 32 66	3	103164-1
△		3.232 3.100 31 64	3	103164-0
△		3.132 3.000 30 62	2	103164-9
△		3.032 2.900 29 60	2	103164-8
△		2.932 2.800 28 58	2	103164-7
△		2.832 2.700 27 56	2	103164-6
△		2.732 2.600 26 54	2	103164-5
△		2.632 2.500 25 52	2	103164-4
△		2.532 2.400 24 50	2	103164-3
△		2.432 2.300 23 48	2	103164-2
△		2.332 2.200 22 46	2	103164-1
△		2.232 2.100 21 44	2	103164-0
△		2.132 2.000 20 42	1	103164-9
△		2.032 1.900 19 40	1	103164-8
△		1.932 1.800 18 38	1	103164-7
△		1.832 1.700 17 36	1	103164-6
△		1.732 1.600 16 34	1	103164-5
△		1.632 1.500 15 32	1	103164-4
△		1.532 1.400 14 30	1	103164-3
△		1.432 1.300 13 28	1	103164-2
△		1.332 1.200 12 26	1	103164-1
△		1.232 1.100 11 24	1	103164-0
△		1.132 1.000 10 22	1	103164-9
△		1.032 .900 9 20	1	103164-8
△		.932 .800 8 18	1	103164-7
△		.832 .700 7 16	1	103164-6
△		.732 .600 6 14	1	103164-5
△		.632 .500 5 12	1	103164-4
△		.532 .400 4 10	1	103164-3
△		.432 .300 3 8	1	103164-2
△		.332 .200 2 6	1	103164-1

△ SUPERSEDED BY 5-103164-7

THIS DRAWING IS A CONTROLLED DOCUMENT.		REV	DATE	DESCRIPTION	BY	CHK
REVISIONS		00				
H2				REVISED PER ECO-11-004820	11MMR11	RK HMR
DRAWING NO.		DATE		SIZE	SCALE	REVISIONS
00779		10/07/99		A1	1:1	1
CUSTOMER DRAWING		DATE		SIZE	SCALE	REVISIONS
		10/07/99		A1	1:1	1