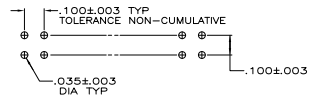
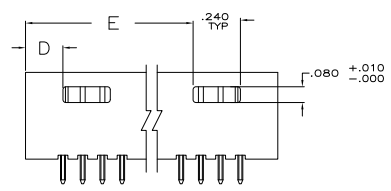
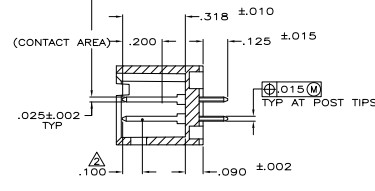
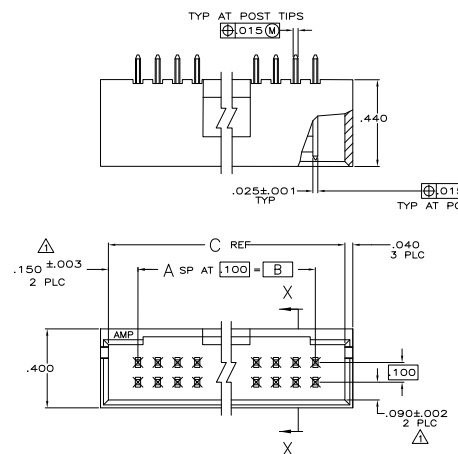


- △ THE NOTED DIMENSIONS APPLY AT THE INTERSECTION OF THE POST AND HOUSING
- △ POINT OF MEASUREMENT FOR PLATING THICKNESS
- △ MATERIAL: HOUSING- FLAME RETARDANT THERMOPLASTIC, COLOR- BLACK
 POSTS- PHOS BRONZE
- △ FINISH: POSTS- .00015 GOLD IN CONTACT AREA,
 .000100-.000200 MATTE TIN-LEAD ON SOLDER TAIL,
 ALL OVER .000050 NICKEL
- △ FINISH: POSTS- .000015 GOLD IN CONTACT AREA,
 .000100-.000200 MATTE TIN ON SOLDER TAIL,
 ALL OVER .000050 NICKEL
- △ OBSOLETE PARTS: OBSOLETE CIS STREAMLINING PER D.RENAUD/D.SINISI

REV	DATE	DESCRIPTION	BY	CHK	APP
AD 00					
K2		REVISED PER EDD-11-004587			



REV	DATE	DESCRIPTION	BY	CHK	APP
3.490	.190	3.800 3.500	35	72	8-102619-4
3.390	.190	3.700 3.400	34	70	8-102619-3
3.290	.190	3.600 3.300	33	68	8-102619-2
3.190	.190	3.500 3.200	32	66	8-102619-1
3.090	.190	3.400 3.100	31	64	8-102619-0
2.990	.190	3.300 3.000	30	62	7-102619-9
2.890	.190	3.200 2.900	29	60	7-102619-8
2.790	.190	3.100 2.800	28	58	7-102619-7
2.690	.190	3.000 2.700	27	56	7-102619-6
2.590	.190	2.900 2.600	26	54	7-102619-5
2.490	.190	2.800 2.500	25	52	7-102619-4
2.390	.190	2.700 2.400	24	50	7-102619-3
2.290	.190	2.600 2.300	23	48	7-102619-2
2.190	.190	2.500 2.200	22	46	7-102619-1
2.090	.190	2.400 2.100	21	44	7-102619-0
1.990	.190	2.300 2.000	20	42	6-102619-9
1.890	.190	2.200 1.900	19	40	6-102619-8
1.790	.190	2.100 1.800	18	38	6-102619-7
1.690	.190	2.000 1.700	17	36	6-102619-6
1.590	.190	1.900 1.600	16	34	6-102619-5
1.490	.190	1.800 1.500	15	32	6-102619-4
1.390	.190	1.700 1.400	14	30	6-102619-3
1.290	.190	1.600 1.300	13	28	6-102619-2
1.190	.190	1.500 1.200	12	26	6-102619-1
1.090	.190	1.400 1.100	11	24	6-102619-0
.990	.190	1.300 1.000	10	22	5-102619-9
.890	.190	1.200 .900	9	20	5-102619-8
---	.490	1.100 .800	8	18	5-102619-7
---	.390	1.000 .700	7	16	5-102619-6
---	.290	.900 .600	6	14	5-102619-5
---	.190	.800 .500	5	12	5-102619-4
---	.090	.700 .400	4	10	5-102619-3
---	.090	.600 .300	3	8	5-102619-2
---	.190	.500 .200	2	6	5-102619-1
3.490	.190	3.800 3.500	35	72	3-102619-4
3.390	.190	3.700 3.400	34	70	3-102619-3
3.290	.190	3.600 3.300	33	68	3-102619-2
3.190	.190	3.500 3.200	32	66	3-102619-1
3.090	.190	3.400 3.100	31	64	3-102619-0
2.990	.190	3.300 3.000	30	62	2-102619-9
2.890	.190	3.200 2.900	29	60	2-102619-8
2.790	.190	3.100 2.800	28	58	2-102619-7
2.690	.190	3.000 2.700	27	56	2-102619-6
2.590	.190	2.900 2.600	26	54	2-102619-5
2.490	.190	2.800 2.500	25	52	2-102619-4
2.390	.190	2.700 2.400	24	50	2-102619-3
2.290	.190	2.600 2.300	23	48	2-102619-2
2.190	.190	2.500 2.200	22	46	2-102619-1
2.090	.190	2.400 2.100	21	44	2-102619-0
1.990	.190	2.300 2.000	20	42	1-102619-9
1.890	.190	2.200 1.900	19	40	1-102619-8
1.790	.190	2.100 1.800	18	38	1-102619-7
1.690	.190	2.000 1.700	17	36	1-102619-6
1.590	.190	1.900 1.600	16	34	1-102619-5
1.490	.190	1.800 1.500	15	32	1-102619-4
1.390	.190	1.700 1.400	14	30	1-102619-3
1.290	.190	1.600 1.300	13	28	1-102619-2
1.190	.190	1.500 1.200	12	26	1-102619-1
1.090	.190	1.400 1.100	11	24	1-102619-0
.990	.190	1.300 1.000	10	22	102619-9
.890	.190	1.200 .900	9	20	102619-8
---	.490	1.100 .800	8	18	102619-7
---	.390	1.000 .700	7	16	102619-6
---	.290	.900 .600	6	14	102619-5
---	.190	.800 .500	5	12	102619-4
---	.090	.700 .400	4	10	102619-3
---	.090	.600 .300	3	8	102619-2
---	.190	.500 .200	2	6	102619-1

△ SUPERCEDED BY 5-102619-7

FINISH	E	D	C	B	A	NO OF POSN	ASSEMBLY PART NUMBER

THIS DRAWING IS A CONTROLLED DOCUMENT. SEE TABLE

TE Connectivity
 HDR ASSY, MOD II, SHROUDED,
 4 SIDES, DBL ROW, VERTICAL,
 .100X100 CL WITH .025 SQ. POSTS

DATE: 00779
 REV: 102619

CUSTOMER DRAWING