

4

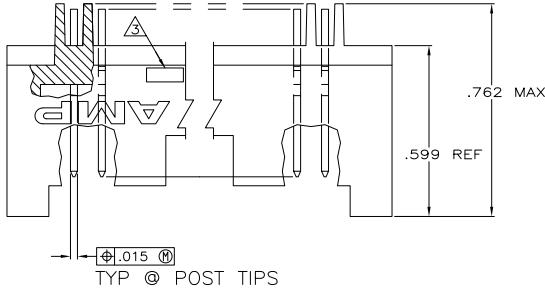
3

2

1

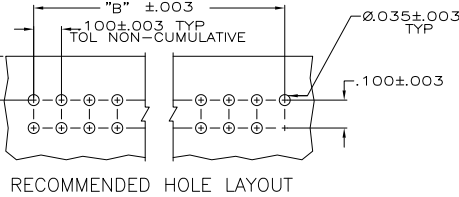
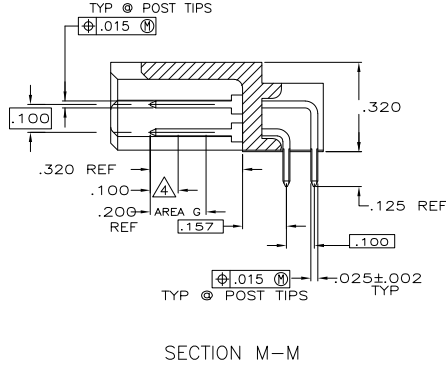
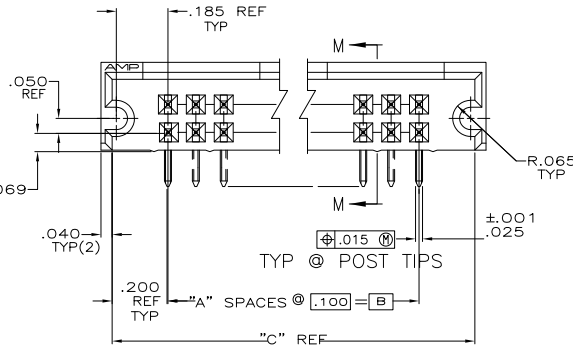
THIS DRAWING IS UNPUBLISHED. RELEASED FOR PUBLICATION. ALL RIGHTS RESERVED.

LOC	DIST	REVISIONS			
P	LTR	DESCRIPTION	DATE	BY	APPD
AD	39	P3	REVISED PER ECO-11-004587	11MAR11	RK HMR



- ▲ PART NO. OBSOLETE
- ▲ .000015 GOLD ON CONTACT AREA G
.000100-.000200 BRIGHT TIN-LEAD
ON SOLDER LEADS, ALL OVER
.000050 NICKEL
- ▲ RECESSED DATE CODE AND CSA LOGO
- ▲ POINT OF MEASUREMENT FOR
PLATING THICKNESS
- ▲ .000015 GOLD ON CONTACT AREA G
.000100-.000200 MATTE TIN ON
SOLDER LEADS, ALL OVER .000050
NICKEL
- ▲ ROHS 2002/95/EC COMPLIANT
- ▲ OBSOLETE PARTS: OBSOLETE CIS STREAMLINING
PER D.RENAUD/D.SINISI

▲	.800	.400	4	10	▲	▲	7-102589-2
▲	10.300	9.900	99	200	▲	▲	7-102589-1
▲	7.300	6.900	69	140	▲	▲	7-102589-0
▲	6.800	6.400	64	130	▲	▲	6-102589-9
▲	4.600	4.200	42	86	▲	▲	6-102589-8
▲	3.900	3.500	35	72	▲	▲	6-102589-7
▲	5.800	.700	7	16	▲	▲	6-102589-6
▲	5.800	5.400	54	110	▲	▲	6-102589-5
▲	4.800	4.400	44	90	▲	▲	6-102589-4
▲	2.300	1.900	19	40	▲	▲	6-102589-3
▲	1.300	.900	9	20	▲	▲	6-102589-2
▲	6.300	5.900	59	120	▲	▲	6-102589-1
▲	3.800	3.400	34	70	▲	▲	6-102589-0
▲	5.100	4.700	47	96	▲	▲	5-102589-9
▲	.900	.500	5	12	▲	▲	5-102589-8
▲	3.300	2.900	29	60	▲	▲	5-102589-7
▲	1.500	1.100	11	24	▲	▲	5-102589-6
▲	2.800	2.400	24	50	▲	▲	5-102589-5
▲	1.800	1.400	14	30	▲	▲	5-102589-4
▲	5.300	4.900	49	100	▲	▲	5-102589-3
▲	2.100	1.700	17	36	▲	▲	5-102589-2
▲	4.300	3.900	39	80	▲	▲	5-102589-1
▲	.800	.400	4	10	▲	▲	2-102589-2
▲	10.300	9.900	99	200	▲	▲	2-102589-1
▲	7.300	6.900	69	140	▲	▲	2-102589-0
▲	6.800	6.400	64	130	▲	▲	1-102589-9
▲	4.600	4.200	42	86	▲	▲	1-102589-8
▲	3.900	3.500	35	72	▲	▲	1-102589-7
▲	1.100	.700	7	16	▲	▲	1-102589-6
▲	5.800	5.400	54	110	▲	▲	1-102589-5
▲	4.800	4.400	44	90	▲	▲	1-102589-4
▲	2.300	1.900	19	40	▲	▲	1-102589-3
▲	1.300	.900	9	20	▲	▲	1-102589-2
▲	6.300	5.900	59	120	▲	▲	1-102589-1
▲	3.800	3.400	34	70	▲	▲	1-102589-0
▲	5.100	4.700	47	96	▲	▲	102589-9
▲	.900	.500	5	12	▲	▲	102589-8
▲	3.300	2.900	29	60	▲	▲	102589-7
▲	1.500	1.100	11	24	▲	▲	102589-6
▲	2.800	2.400	24	50	▲	▲	102589-5
▲	1.800	1.400	14	30	▲	▲	102589-4
▲	5.300	4.900	49	100	▲	▲	102589-3
▲	2.100	1.700	17	36	▲	▲	102589-2
▲	4.300	3.900	39	80	▲	▲	102589-1



THIS DRAWING IS A CONTROLLED DOCUMENT. DIM: J. KNAUB 12-2-93
OK: H. PALEY 12-20-93
NAME: TE Connectivity

TE Connectivity logo

ASSY. HEADER, MOD II, .025 SQ POSTS
.100 X.100CL

APPLIC. SPEC: -
MATERIAL: HSG: FLAME RETARDANT POLYESTER POSTS: PHOS BRONZE
FINISH: -
POSTS: SEE TABLE

SIZE: A2
CASE CODE: 00779
DRAWING NO: C=102589
RESTRICTED TO: -
SCALE: 4:1
SHEET: 1 of 1
REV: P3