

4

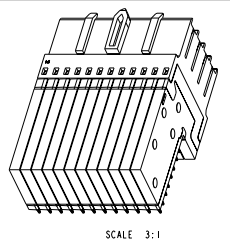
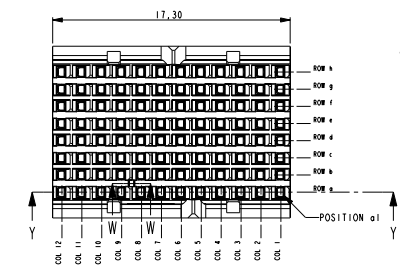
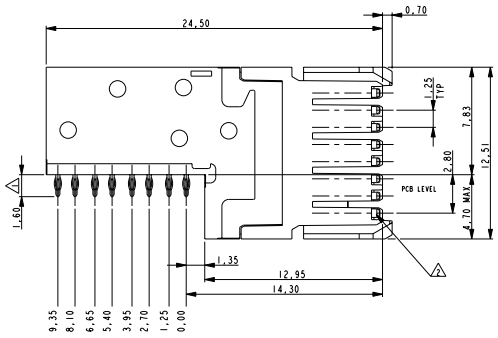
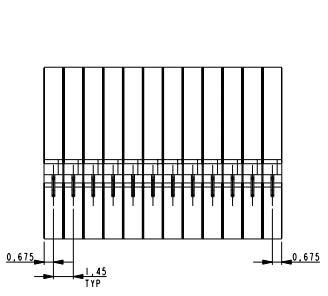
3

2

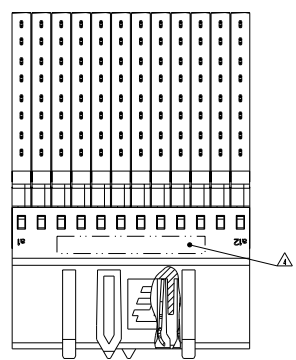
1

THIS DRAWING IS UNPUBLISHED. RELEASED FOR PUBLICATION
 COPYRIGHT BY TICO ELECTRONICS CORPORATION. ALL RIGHTS RESERVED.

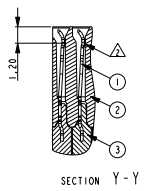
| REVISIONS | | | | |
|---|-----------|------|------|--------|
| REV | DATE | BY | CHKD | APPROV |
| A | 22AUG2011 | JvdH | TdB | |
| DESCRIPTION: DRAWING RELEASED PER ECR-11-017294 | | | | |



SCALE 3:1



SECTION W-W (KEY POSITION)



SECTION Y-Y

- NOTES:
- △ PLATING: 0.5µm MIN. TIN OVER NICKEL.
 - △ PLATING:

| PARTNUMBER | PERFORMANCE LEVEL |
|------------|---|
| 1857657-1 | PERFORMANCE LEVEL 1: CONNECTOR TESTED AND QUALIFIED AGAINST TELCORDIA GR-1217-CORE QUALITY LEVEL 111: UNCONTROLLED ENVIRONMENT APPLICATIONS. SEE PRODUCT SPEC 108-19353 |
| 1857657-2 | PERFORMANCE LEVEL 2: CONFORMS TO ALL TESTING ACCORDING PRODUCT SPEC 108-19320, -250 MATING CYCLES, 4 DAYS MIXED GAS TEST PER IEC 60068-2-60 METHOD 1 |

- 3 CONSULT APPLICATION SPEC OR CONTACT TE CONNECTIVITY FOR PERMISSIBLE CONTACT ASSIGNMENTS.
- △ CONNECTOR MARKED WITH PARTNUMBER AND DATE CODE.
- 5 FOR PC-BOARD ROUTING RECOMMENDATIONS SEE SPEC 114-19140

PRODUCT HAS NOT COMPLETED QUALIFICATION TESTING

| | | |
|---|----------|--------------------|
| 3 | OVERMOLD | LCP 30% GF NATURAL |
| 2 | HOUSING | LCP 30% GF NATURAL |
| 1 | CONTACT | COPPER ALLOY |

THIS DRAWING IS A CONTROLLED DOCUMENT. DATE: 30 OCT 2006
 DESIGNED BY: J.V.D. HEDDEN
 CHECKED BY: J. TILLEN
 APPROVED BY: J. BROEKSTIEG
 PRODUCT SPEC: 114-19106
 APPLICATION SPEC: 114-19106
 MATERIAL: FINISH

TE Connectivity
FEMALE CONNECTOR
Z-PACK Slim UHD High Speed

ITEM NO. DESCRIPTION MATERIAL
 A200779 1857657

SCALE: 5:1 SHEET 1 OF 2 REV A

4

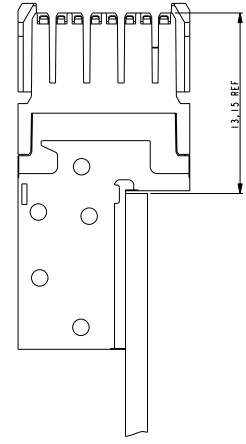
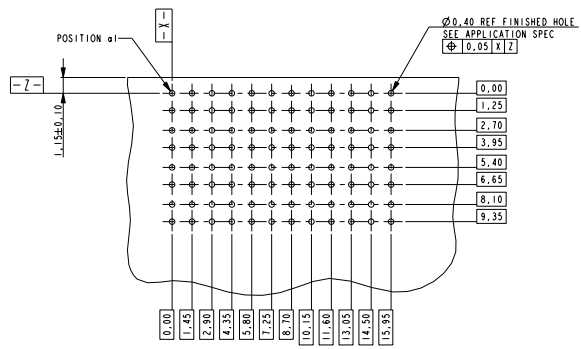
3

2

1

THIS DRAWING IS UNPUBLISHED. RELEASED FOR PUBLICATION
 COPYRIGHT © BY TICO ELECTRONICS CORPORATION. ALL RIGHTS RESERVED.

| LOC | DIST | REVISIONS | | | | |
|-----|------|-----------|-------------|------|----|------|
| | | P | LYR | DATE | BY | APVS |
| H | - | - | SEE SHEET 1 | - | - | - |
| | | | | | | |
| | | | | | | |



BOARD THICKNESS 1.2 MIN
 RECOMMENDED PCB LAYOUT
 (COMPONENT SIDE SHOWN)

PRODUCT HAS NOT COMPLETED
 QUALIFICATION TESTING

| | | | | |
|--|--|------------------|--------------|--|
| THIS DRAWING IS A CONTROLLED DOCUMENT. | | OWN | 30 OCT 2006 | |
| DRAWN BY | | J.V.D. REIDEN | 30 OCT 2006 | |
| CHECKED BY | | J. TILIN | 30 OCT 2006 | FEMALE CONNECTOR Z-PACK Slim UHD High Speed |
| APPROVED BY | | J. BROEKSTEGE | | |
| PRODUCT SPEC | | APPLICATION SPEC | SEE SHEET 1 | |
| APPLICATION SPEC | | APPLICATION SPEC | SEE SHEET 1 | |
| MATERIAL | | WEIGHT | A2 | SIZE CASE CODE DRAWING NO 00779 ©-1857657 |
| FINISH | | CUSTOMER DRAWING | SCALE 5:1 | RESTRICTED TO |
| | | | SHEET 2 OF 2 | REV A |