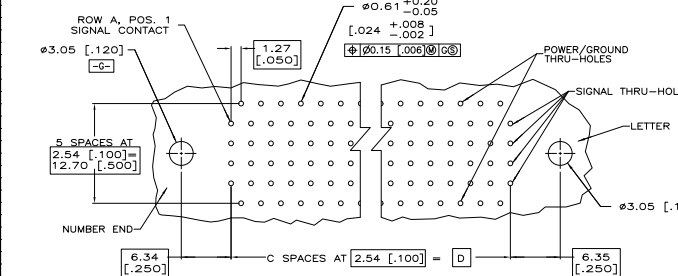
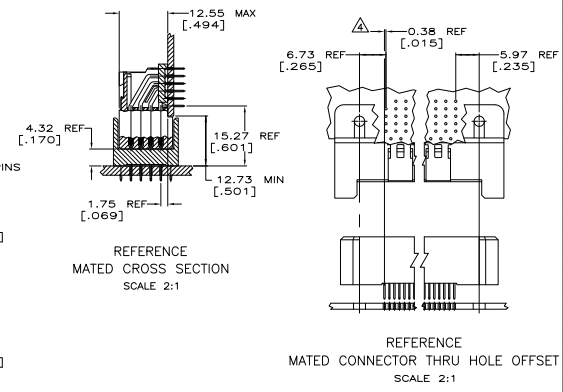
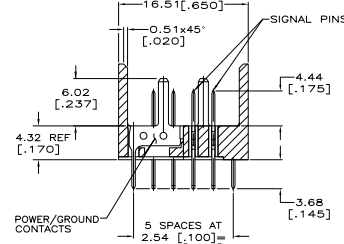
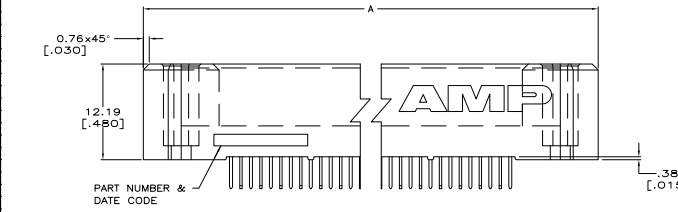
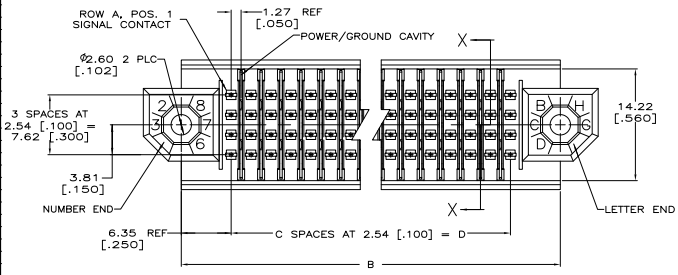


REV	DATE	DESCRIPTION	BY	CHK	APP
AD 47	7/11/04	REVISION			
D1		REVISED PER EDD-11-022794			

- △ HOUSING & ORGANIZER MATERIAL: LIQUID CRYSTAL POLYMER PER ASTM D5138-LCP000G30A32250, COLOR: BLACK.
- △ SIGNAL & POWER/GROUND PLANE CONTACT MATERIAL: PHOSPHOR BRONZE, PER CDA CS1100.
- △ CONTACT FINISH:  
 ON MATING SURFACES-  
 FLASH GOLD PER AMP INCORPORATED SPECIFICATION, OVER  
 0.00076 [0.00030] MIN. PALLADIUM-NICKEL PER AMP INCORPORATED SPECIFICATION, OVER  
 0.00127 [0.00050] MIN. NICKEL PER FEDERAL SPECIFICATION QQ-N-290, CLASS: 2, GRADE: n/g.  
 ON LEADS-  
 0.00381 [0.00150] MIN. TIN-LEAD PER MIL-P-81728, OVER  
 0.00127 [0.00050] MIN. NICKEL PER FEDERAL SPECIFICATION QQ-N-290, CLASS: 2, GRADE: n/g.
- △ RECEPTACLE ASSEMBLY SOLDER LEADS ARE OFFSET .015 TOWARD THE LETTER END OF THE CAVITY CENTERLINE. THE PIN ASSEMBLY SOLDER LEADS ARE IN LINE WITH THE CAVITY CENTERLINE.



RECOMMENDED CIRCUIT PATTERN  
 PER ANSI/IPC-D-300 TYPE II, CLASS C  
 (COMPONENT SIDE)

OBSOLETE	125.26	6.900	59	147.86	7.400	1197.61	7.780	280	646245-7
OBSOLETE	149.86	9.900	59	162.56	6.400	172.21	6.780	240	646245-6
OBSOLETE	137.16	5.400	54	149.86	5.900	159.51	6.280	220	646245-5
OBSOLETE	111.76	4.400	44	124.46	4.900	134.11	6.280	180	646245-4
OBSOLETE	86.36	3.400	34	99.06	3.900	108.71	4.280	140	646245-3
OBSOLETE	60.96	2.400	24	73.66	2.900	83.31	3.280	100	646245-2
OBSOLETE	36.66	1.400	14	48.26	1.900	57.91	2.280	60	646245-1

INCHES	MILLIMETERS	INCHES	MILLIMETERS	INCHES	MILLIMETERS	INCHES	MILLIMETERS
1/16	1.5875	1/8	3.1750	3/16	4.7625	1/4	6.3500
5/16	7.9375	3/8	9.5250	1/2	12.7000	5/8	15.8750
7/8	22.2250	1	25.4000	1 1/8	29.5250	1 1/4	31.7500
1 1/8	31.7500	1 1/2	38.1000	1 3/4	44.4500	2	50.8000
2 1/8	54.0000	2 1/2	63.5000	3	76.2000	3 1/2	88.9000
4	101.6000	5	127.0000	6	152.4000	8	203.2000

THIS DRAWING IS A CONTROLLED DOCUMENT. IN THE EVENT OF A CHANGE, THE REVISION NUMBER WILL BE INDICATED BY A CIRCLE AND NUMBER IN THE REVISION AREA.

DATE: 100-1244

SIZE: 100-1244

REV: (TBD)

CUSTOMER DRAWING: A100779 (G=646245)

TE Connectivity

Z-PACK Stripline 100 PIN ASSEMBLY, INTEGRAL, 3.68 [145] LEAD LENGTH SOLDER LEAD

NO. OF SIGNAL PINS: 60

PART NO.: