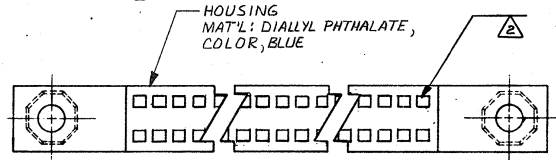
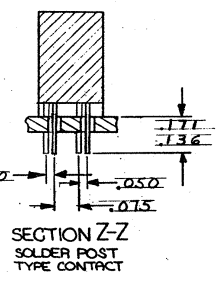
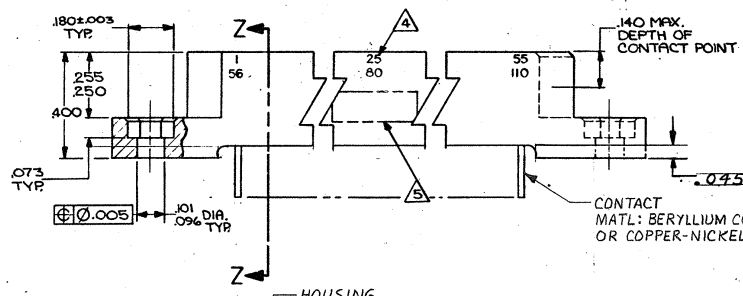
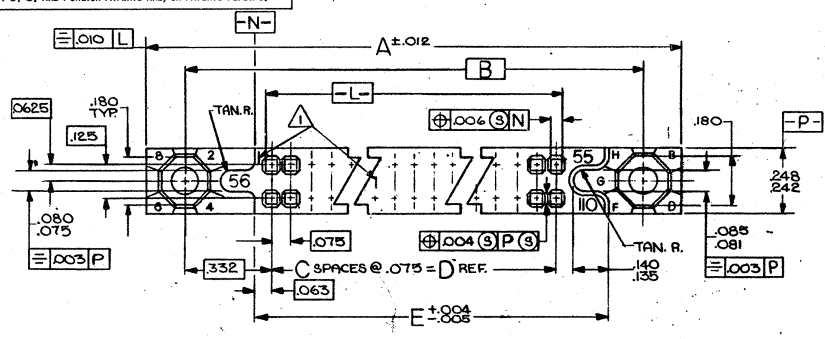


DRAWING MADE IN THIRD ANGLE PROJECTION

© COPYRIGHT 19 BY AMP INCORPORATED, HARRISBURG, PA.
ALL INTERNATIONAL RIGHTS RESERVED. AMP INCORPORATED PRODUCTS
COVERED BY U. S. AND FOREIGN PATENTS AND/OR PATENTS PENDING.

REVISIONS					
P	F	ZONE/LTR	DESCRIPTION	DATE	APPROVED
✓		Q	RELEASED	m.s. 8-86	
✓		A	REV PER DF-1051	TW 5-89	EDS
✓		B	REV 0600-5641-96	9-97	MLM
		C	REV PER ECD-07-004569	3-07	PY



- ▲ NUMBERS (SEE TABLE) AND LINES INDICATING EVERY FIVE (5) CAVITIES STAMPED ON MATING FACE (WHITE INK).
- ▲ BOTTOM SURFACE SEALED WITH EPOXY
- ▲ MEETS ALL APPLICABLE REQUIREMENTS OF MIL-C-55302.
- ▲ NUMBERS INDICATING EVERY FIVE (5) CAVITIES STAMPED ON SIDE (EXCEPT 10 POS).
- ▲ AMP, PART NUMBER, AND DATE CODE INK STAMPED WHITE THIS APPROX. AREA.

UNLESS OTHERWISE SPECIFIED DIMENSIONS ARE IN INCHES		CONTRACT NO.		PART NO.	
TOLERANCES ON:		DR <i>M. Smith</i> 3-16-86		AMP AMP INCORPORATED Harrisburg, Pa.	
DECIMALS ±.005		CHK <i>James P. Scholz</i> 2-9-87		NAME ASSEMBLY, RECEPTACLE, 750 SER. BOX,	
ANGLES		APP'D <i>James P. Scholz</i> 2-9-87		WITH .010x.020 POST CONTACTS,	
MATERIAL SEE CALLOUTS		APPROV'D <i>[Signature]</i> 2/11/87		AND EXTERNAL KEYING, SEALED	
FINISH CONTACTS: .00050 GOLD IN CONTACT AREA, TIN-LEAD ON TAILS; ALL OVER NICKEL		DSGN APP'D		SIZE (CODE IDENT NO) DRAWING NO	
		OTHER APP'D		C 00779 534196	
				REV C	
				SCALE 4:1 SHEET 1 OF 2	

CUSTOMER DRAWING

534196

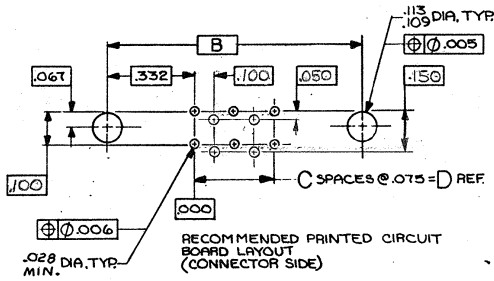
DRAWING MADE IN THIRD ANGLE PROJECTION

© COPYRIGHT 19 BY AMP INCORPORATED, HARRISBURG, PA.
ALL INTERNATIONAL RIGHTS RESERVED. AMP INCORPORATED PRODUCTS
COVERED BY U. S. AND FOREIGN PATENTS AND/OR PATENTS PENDING.

LOC	REV	DATE	APPROVED
1	1		

REVISIONS

P	F	ZONE	LTR	DESCRIPTION	DATE	APPROVED
				SEE SHEET 1 OF 2		



OBSOLETE	1	55	4.315	4.050	54	4.715	5.005	110	534196-1
OBSOLETE	56	110							
OBSOLETE	1	50	3.940	3.675	49	4.340	4.630	100	1
OBSOLETE	51	100							
OBSOLETE	1	45	3.565	3.300	44	3.965	4.255	90	
OBSOLETE	46	90							
OBSOLETE	1	40	3.190	2.925	39	3.590	3.880	80	
OBSOLETE	41	80							
OBSOLETE	1	35	2.815	2.550	34	3.215	3.505	70	
OBSOLETE	36	70							
OBSOLETE	1	30	2.440	2.175	29	2.840	3.130	60	
OBSOLETE	31	60							
OBSOLETE	1	25	2.065	1.800	24	2.465	2.755	50	
OBSOLETE	26	50							
OBSOLETE	1	20	1.690	1.425	19	2.090	2.380	40	
OBSOLETE	21	40							
OBSOLETE	1	15	1.315	1.050	14	1.715	2.005	30	
OBSOLETE	16	30							
OBSOLETE	1	10	.940	.675	9	1.340	1.630	20	
OBSOLETE	11	20							
OBSOLETE	1	5	.565	.300	4	.965	1.255	10	534196-1
OBSOLETE	6	10							

UNLESS OTHERWISE SPECIFIED DIMENSIONS ARE IN INCHES. TOLERANCES ON: DECIMALS ± .005 ANGLES ± .005	CONTRACT NO. 8-15-86	AMP AMP INCORPORATED Harrisburg, Pa.
MATERIAL	DR M. Smith CHK James P. Scholz APPR James P. Scholz APPR L. Hoff 2/17/87	
FINISH SEE SHEET 1	OTHER APPR	NAME ASSEMBLY, RECEPTACLE, 750 SER. BOX, WITH .010 x .020 POST CONTACTS AND EXTERNAL KEYING, SEALED
	SIZE CODE IDENT NO DRAWING NO C 00779 534196	REV C
	SCALE 4:1	SHEET 2 OF 2

AMP 1471-6 REV 12-78

CUSTOMER DRAWING

534196

A