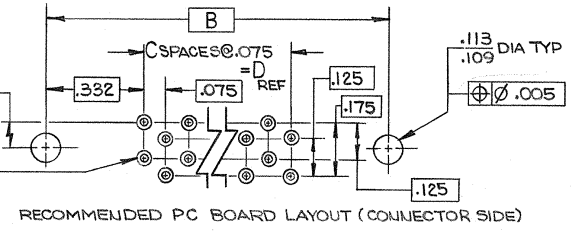
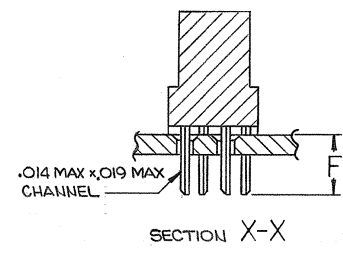
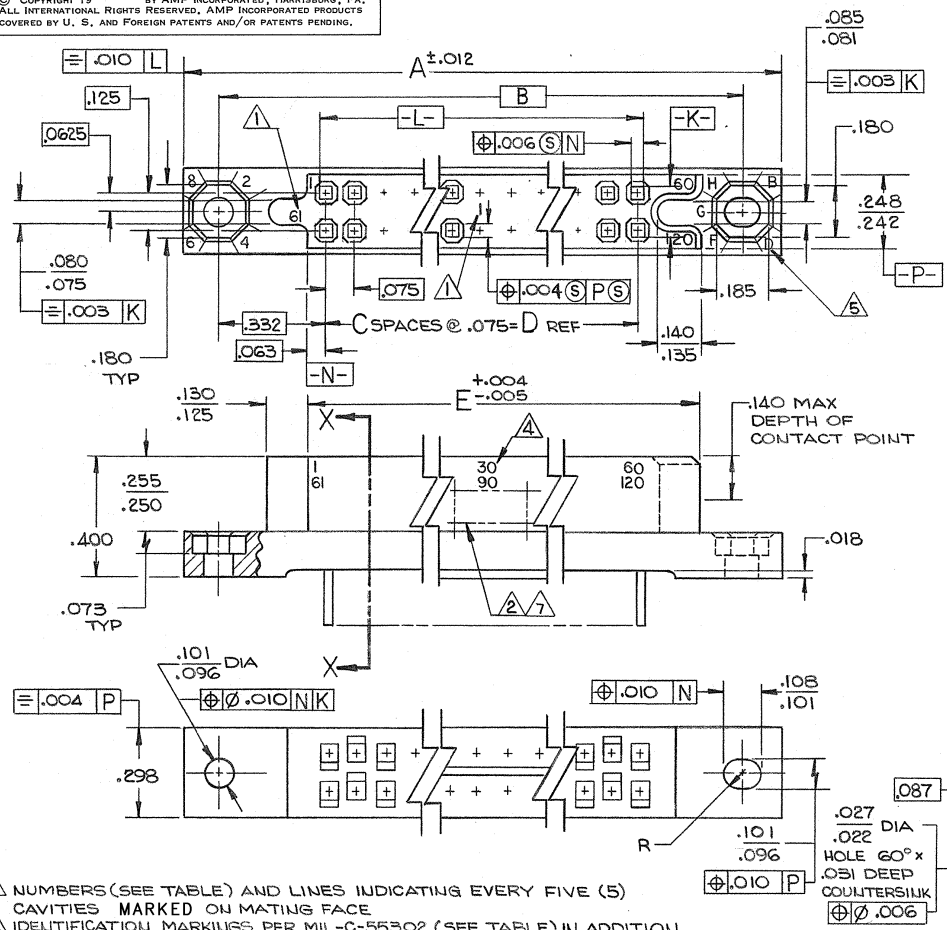


DRAWING MADE IN THIRD ANGLE PROJECTION

© COPYRIGHT 19 BY AMP INCORPORATED, HARRISBURG, PA.
 ALL INTERNATIONAL RIGHTS RESERVED. AMP INCORPORATED PRODUCTS
 COVERED BY U. S. AND FOREIGN PATENTS AND/OR PATENTS PENDING.

LOC		DIST		REVISONS		DATE	APPROVED
P	F	ZONE	LTR	DESCRIPTION	PY		
		D		ECO-08-020831		10-08	BW



- 1. NUMBERS (SEE TABLE) AND LINES INDICATING EVERY FIVE (5) CAVITIES MARKED ON MATING FACE
 - 2. IDENTIFICATION MARKINGS PER MIL-C-55302 (SEE TABLE) IN ADDITION TO "AMP", PART NO. AND DATE CODE.
 - 3. MUST MEET ALL APPLICABLE REQUIREMENTS OF MIL-C-55302.
 - 4. NUMBERS INDICATING EVERY FIVE (5) CAVITIES MARKED ON SIDE.
 - 5. KEY POSITION INDICATORS MOLDED ON HOUSING.
 - 6. USES KEY KIT PART NUMBER 530341-3.
 - 7. MARKING FOR DASH 5 PART NUMBER IS: AMP 531145-5, DATE CODE, 414-2998-001, 94756, 00779.
 - 8. HOUSING: DIALYL PHTHALATE PER MIL-M-14 TYPE SDG-F
 - 9. COLOR: BLUE
 - 10. CONTACTS: BERYLLIUM COPPER (BeCu) OR COPPER NICKEL SILICONE (CuNiSi)
 - 11. FINISH: .00050 GOLD IN CONTACT AREA, TIN-LEAD ON SOLDER TAILS, ALL OVER NICKEL UNDERPLATE.
- [NOTES CONTINUED--SEE SHEET 2 J]

UNLESS OTHERWISE SPECIFIED DIMENSIONS ARE IN INCHES.		CONTRACT NO		AMP AMP INCORPORATED Harrisburg, Pa.		PART NO	
TOLERANCES ON: DECIMALS ±.005 ANGLES ±.005		DR	10-9-79	NAME		REV	
MATERIAL		CHKD	11/79	RECEPTACLE ASSEMBLY, 750 SERIES BOX, WITH EXTERNAL KEYING, FLOW SOLDER CONTACTS		D	
FINISH		APPD	11/79	SIZE		SHEET	
		DSGN APPD	11/79	C 00779 531145		1 OF 2	
		OTHER APPD		SCALE 4:1			

CUSTOMER DRAWING

AMP 1471-6 REV 12-78

DRAWING MADE IN THIRD ANGLE PROJECTION

3

2

1

LOC DIST
DF FO

© COPYRIGHT 19 BY AMP INCORPORATED, HARRISBURG, PA.
ALL INTERNATIONAL RIGHTS RESERVED, AMP INCORPORATED PRODUCTS
COVERED BY U. S. AND FOREIGN PATENTS AND/OR PATENTS PENDING.

REVISIONS			
P	F	ZONE	LTR
DESCRIPTION		DATE	APPROVED
SEE SHEET 1			

△ ATTACHED FLOW CHART PERTAINS TO DASH FIVE ONLY
AND CORRESPONDS TO THE BASELINE DOCUMENT FOR
532476, ROCKWELL ONLY.

△	#	1 - 90 91 - 180	215/250	6.940	6.675	89	7.340	7.630	180	531145-5
—	M55302/25-29	1 - 90 91 - 180	.171/.136	6.940	6.675	89	7.340	7.630	180	531145-4
—	M55302/25-25	1 - 80 81 - 160		6.190	5.925	79	6.590	6.880	160	-3
—	M55302/25-21	1 - 75 76 - 150		5.815	5.550	74	6.215	6.505	150	-2
—	M55302/25-17	1 - 60 61 - 120	.171/.136	4.690	4.425	59	5.090	5.380	120	531145-1
REMARKS	IDENTIFICATION MARKING	CONTACT IDENT NO.	F	E	D	C	B	A	NO. OF CONTACTS	PART NO

UNLESS OTHERWISE SPECIFIED DIMENSIONS ARE IN INCHES. TOLERANCES ON: DECIMALS ± ANGLES ±		CONTRACT NO 10-9-79	AMP AMP INCORPORATED Harrisburg, Pa.
MATERIAL		DR IRCHAFFNER	
FINISH		CHR Kornelie Ombin 11/7/77	NAME RECEPTACLE ASSEMBLY, 750 SERIES BOX, WITH EXTERNAL KEYING, FLOW SOLDER CONTACTS
		APPD Kornelie Ombin 11/7/77	
		APPD Kornelie Ombin 11/6/79	SIZE C
		DSGN APPD	CODE IDENT NO 00779
		OTHER APPD	DRAWING NO 531145
			REV D
			SHEET 2

531145