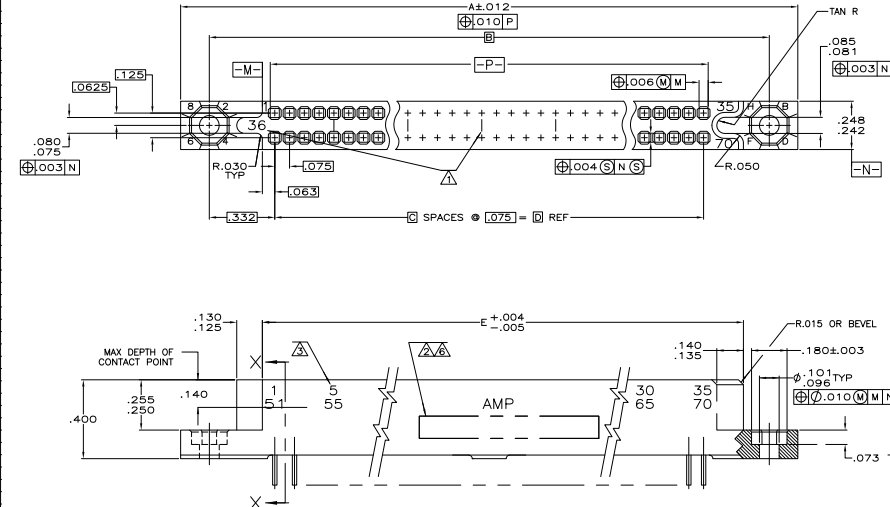
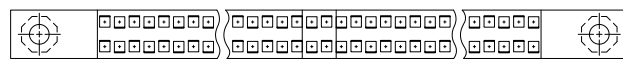
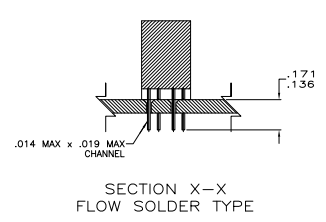


THIS DRAWING IS UNCLASSIFIED AND IS NOT TO BE RELEASED UNLESS INDICATED OTHERWISE
 © 2005 BY TDS ELECTRONICS CORPORATION. ALL RIGHTS RESERVED.

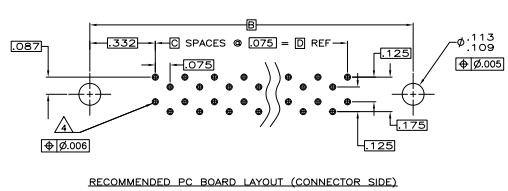
REV	DATE	DESCRIPTION	BY	APP'D
1				
2				
3				
4				
5				
6				
7				
8				



- △ NUMBERS (SEE TABLE) AND LINES INDICATING EVERY FIVE CAVITIES MARKED ON MATING FACE.
- △ IDENTIFICATION MARKINGS PER MIL-C-55302 (SEE TABLE) IN ADDITION TO AMP, PART NUMBER, AND DATE CODE
- △ NUMBERS INDICATING EVERY FIVE CAVITIES MARKED ON SIDE (EXCEPT 10 POSN)
- △ .022-.027 DIA HOLE IN PC BOARD, 60°x .031 DEEP COUNTERSINK RECOMMENDED ON CONNECTOR SIDE OF BOARD
- 5. MUST MEET ALL APPLICABLE REQUIREMENTS IF MIL-C-55302.
- △ CUSTOMER PART NO 90132-2 ADDED IN PLACE OF MIL-C-55302 PART NO
- △ FINISH: .000050 GOLD IN CONTACT AREA, TIN-LEAD ON SOLDER TAILS OVER NICKEL UNDERPLATE.
- △ FINISH: .000050 GOLD ALL OVER NICKEL UNDERPLATE



OBSELETE	NONE	△	1	46	90	△	3.565	3.300	44	3.965	4.255	90	1-531142-2			
			45	90	△	[83.82]	[83.82]	[83.82]		[100.71]	[107.32]					
M55302 / 24-85			1	56	△	4.315	4.050	54	4.715	5.005		110	1-531142-1			
			55	110	△	[102.87]	[102.87]			[119.76]	[127.13]					
M55302 / 24-81			1	50	100	△	3.940	3.675	49	4.340	4.630	100	1-531142-0			
			45	90	△	[83.82]	[93.35]			[110.24]	[117.60]					
M55302 / 24-77			1	46	△	3.565	3.300	44	3.965	4.255		90	531142-9			
			45	90	△	[83.82]	[83.82]			[100.71]	[108.08]					
M55302 / 24-73			1	40	80	△	3.190	2.925	39	3.590	3.880	80	531142-8			
			40	80	△	[83.82]	[74.30]			[91.19]	[98.55]					
M55302 / 24-69			1	36	70	△	2.815	2.550	34	3.215	3.505	70	531142-7			
			35	70	△	[83.82]	[64.77]			[80.70]	[90.17]					
M55302 / 24-65			1	31	60	△	2.440	2.175	29	2.840	3.130	60	531142-6			
			30	60	△	[83.82]	[55.25]			[72.14]	[79.50]					
M55302 / 24-61			1	26	50	△	2.065	1.800	24	2.465	2.755	50	531142-5			
			25	50	△	[83.82]	[45.72]			[62.61]	[69.98]					
M55302 / 24-57			1	21	40	△	1.690	1.425	19	2.090	2.380	40	531142-4			
			20	40	△	[83.82]	[36.20]			[53.09]	[60.45]					
M55302 / 24-53			1	16	30	△	1.315	1.050	14	1.715	2.005	30	531142-3			
			15	30	△	[83.82]	[26.67]			[43.56]	[50.93]					
M55302 / 24-49			1	11	20	△	.940	.675	9	1.340	1.630	20	531142-2			
			10	20	△	[83.82]	[17.15]			[34.04]	[41.40]					
M55302 / 24-45			1	6	10	△	.565	.300	4	.965	1.255	10	531142-1			
			5	10	△	[83.82]	[7.62]			[24.51]	[31.88]					
IDENTIFICATION MARKING						CONTACT IDENT NO			FINISH	E	D	C	B	A	POSN	PART NO.



THIS DRAWING IS A CONTROLLED DOCUMENT. IF YOU ARE NOT THE ORIGINAL USER, CONTACT THE ORIGINAL USER FOR THE LATEST REVISIONS.

DESIGNED BY: [] CHECKED BY: [] DRAWN BY: [] DATE: []

REVISED BY: [] DATE: []

DATE: [] TIME: []

SIZE: A1 00779 (G=531142)

CUSTOMER DRAWING

RECEPTACLE ASSY, 750 SERIES BOX, WITH FLOW SOLDER CONTACTS & EXTERNAL KEYING

REVISIONS

DATE: [] TIME: []

SIZE: 4.1