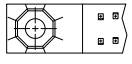
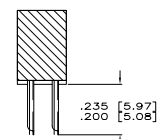
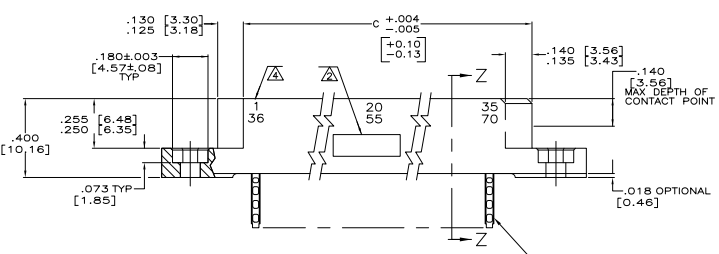
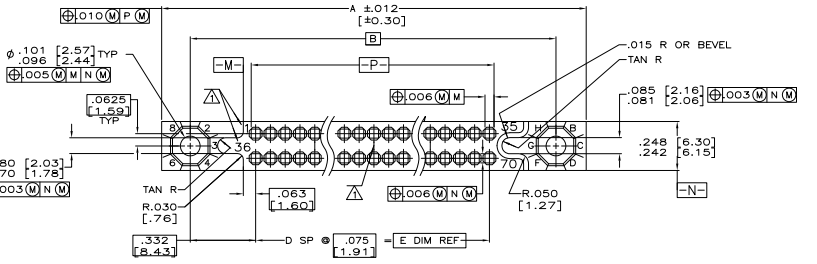


THIS DRAWING IS UNCLASSIFIED
 UNLESS INDICATED OTHERWISE
 ALL RIGHTS RESERVED

| REVISIONS | | | DATE | BY | APP |
|-----------|---|----------------------|---------|----|-----|
| 1 | A | REV PER ECO-07-04049 | 22MAY07 | PY | ND |



- ▲ NUMBERS (SEE TABLE) AND LINES INDICATING EVERY FIVE CAVITIES.
- ▲ CUSTOMER PART NO, 00779, DATE CODE, AMP PART NO, AND AMP IN AREA SHOWN
- 3. MUST MEET ALL APPLICABLE REQUIREMENTS OF MIL-C-55302 AND ITTA DRAWING 1138740
- ▲ NUMBERS INDICATING EVERY FIVE CAVITIES MARKED ON SIDE.
- ▲ CONTACT MATERIAL: BERYLLIUM COPPER (BeCu) OR COPPER NICKEL SILICON (CuNiSi)

| IDENTIFICATION MARKING | CONTACT IDENT NO | DIM E | DIM D | DIM C | DIM B | DIM A | NO OF CONTACTS | PART NO. |
|------------------------|------------------|-------------------|-------|-------------------|-------------------|-------------------|----------------|------------|
| M55302/24-78 | 1-45 46-90 | 3.300 [83.82] | 44 | 3.565 [90.55] | 3.965 [100.71] | 4.255 [108.08] | 90 | 1-531129-2 |
| M55302/24-86 | 1-55 56-110 | 4.050 [102.87] | 54 | 4.315 [109.60] | 4.715 [119.76] | 5.005 [127.13] | 110 | 1-531129-1 |
| M55302/24-82 | 1-50 51-100 | 3.675 [93.35] | 49 | 3.940 [100.08] | 4.340 [110.24] | 4.630 [117.60] | 100 | 1-531129-0 |
| M55302/24-74 | 1-40 41-80 | 2.925 [74.30] | 39 | 3.190 [81.03] | 3.590 [91.19] | 3.880 [98.55] | 80 | 531129-9 |
| M55302/24-70 | 1-35 36-70 | 2.250 [56.77] | 34 | 2.815 [71.50] | 3.215 [81.66] | 3.505 [89.03] | 70 | 531129-8 |
| M55302/24-66 | 1-30 31-60 | 2.175 [55.25] | 29 | 2.440 [61.98] | 2.840 [72.14] | 3.130 [79.50] | 60 | 531129-7 |
| M55302/24-62 | 1-25 26-50 | 1.800 [45.72] | 24 | 2.065 [52.45] | 2.465 [62.61] | 2.755 [69.98] | 50 | 531129-6 |
| M55302/24-58 | 1-20 21-40 | 1.425 [36.20] | 19 | 1.690 [42.93] | 2.090 [53.09] | 2.380 [60.45] | 40 | 531129-5 |
| M55302/24-54 | 1-15 16-30 | 1.050 [26.67] | 14 | 1.315 [33.40] | 1.715 [43.56] | 2.005 [50.93] | 30 | 531129-4 |
| M55302/24-50 | 1-10 11-20 | .675 [17.15] | 9 | .940 [23.93] | 1.340 [34.04] | 1.630 [41.40] | 20 | 531129-3 |
| M55302/24-46 | 1-5 6-10 | .300 [7.62] | 4 | .565 [14.35] | .965 [24.51] | 1.255 [31.88] | 10 | 531129-2 |
| M55302/24-46 | 1-45 46-90 | 3.300 [83.82] | 44 | 3.565 [90.55] | 3.965 [100.71] | 4.255 [108.08] | 90 | 531129-1 |

THIS DRAWING IS A CONTROLLED DOCUMENT. **REVISIONS** HARRISBURG, PA 17105-2608

DESIGNED BY: []
 DRAWN BY: []
 CHECKED BY: []
 APPROVED BY: []

RECEPTACLE ASSY, 750 SERIES BOX MILITARY, WITH EXTERNAL KEYING AND SOLDER EJECT CONTACTS

SEE NOTE 5

CUSTOMER DRAWING

DATE: 4.1 1 1