

4

3

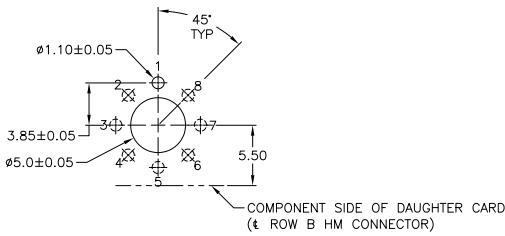
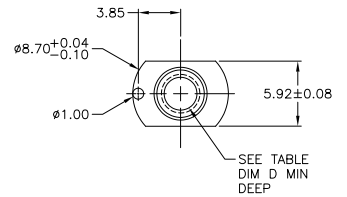
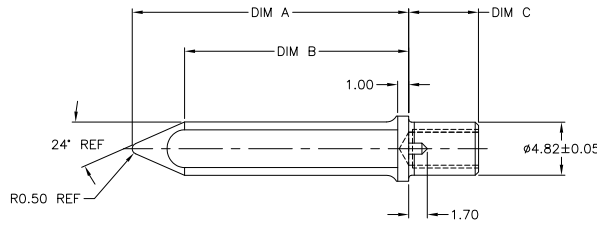
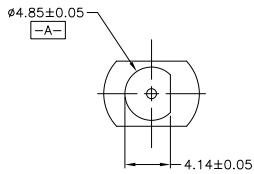
2

1

THIS DRAWING IS UNPUBLISHED. RELEASED FOR PUBLICATION. ALL RIGHTS RESERVED.

LOC	DIST	REVISIONS			
F	LNK	DESCRIPTION	DATE	BY	APPD
G1		REVISED PER ECO-11-004835	11MAR11	RK	HMR

- 1 MATERIAL: ZINC ALLOY DIE CASTING.
- 2 FINISH: CHROMATE CONVERSION COATING. (ROHS COMPATIBLE).
- 3 FINISH: NICKEL PLATING
- 4 TOLERANCE ON DIMENSION "C" IS ±0.05MM



THREAD TYPE	DIM D	DIM C	DIM B	DIM A	FINISH	MATERIAL	PART NUMBER
6-32UNC-2B	2.9	2.4	20.39	25.16	2, 4	1	5223985-9
6-32UNC-2B	4.65	5.0	20.39	25.16	2, 3, 4	1	5223985-8
4-40UNC-2B	2.6	1.7	20.39	25.16	2, 3	1	5223985-7
6-32UNC-2B	4.65	5.0	20.39	25.16	2, 3	1	5223985-6
6-32UNC-2B	2.2	1.7	20.39	25.16	2, 3	1	5223985-5
6-32UNC-2B	3.45	3.8	20.39	25.16	2, 3	1	5223985-4
6-32UNC-2B	3.0	6.35	24.23	29.00	2, 3	1	5223985-3
6-32UNC-2B	6.0	6.35	20.39	25.13	2, 3	1	5223985-1

RECOMMENDED P.C. BOARD LAYOUT
(POSITION SHOWN USED WITH P/N 223986-1)

THIS DRAWING IS A CONTROLLED DOCUMENT.

DIMENSIONS: mm 	TOLERANCES UNLESS OTHERWISE SPECIFIED: 0 PLC ± 1 PLC ± 2 PLC ± 0.13 3 PLC ± 4 PLC ± ANGLES ± 0.30°	DIM J. POLIGNONE OSAPROS DIM K. CALDWELL OSAPROS DIM L. PATTERSON OSAPROS DIM M. PATTERSON OSAPROS PRODUCT SPEC:	TE Connectivity GUIDE PIN, UNIVERSAL POWER MODULE
MATERIAL: SEE TABLE	FINISH: SEE TABLE	APPLICATION SPEC: -	SIZE: A2 CASE CODE: C-5223985 DRAWING NO: - RESTRICTED TO: -
CUSTOMER DRAWING		WEIGHT: -	SCALE: 1:1 SHEET: 1 of 1 REV: G1