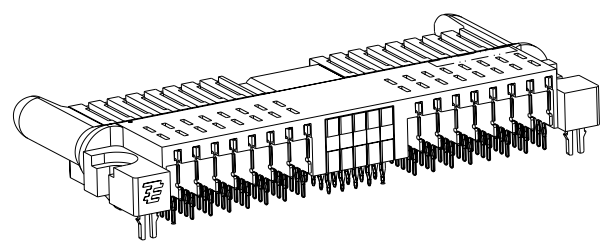
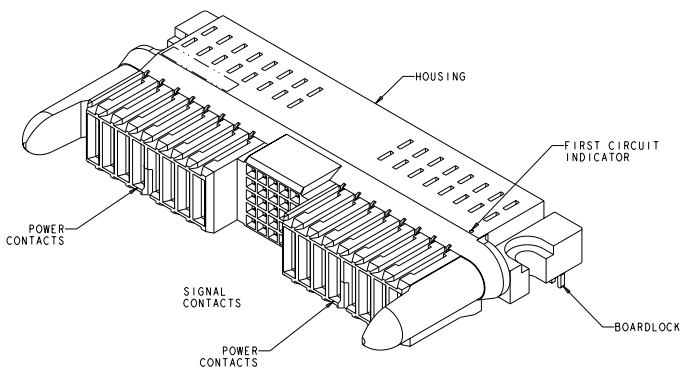


REV. NO.		REVISIONS			
REV.	NO.	DATE	BY	CHKD.	APPD.
A	PER ECO-09-012369	20090908	SLP	ECR	
B	ECO-09-012491	20090908	LAN	EW	
C	ECO-09-020526	20090908	LAN	EW	
D	REV PER ECO-11-008492	20090911	RS	MS	



2-1926721-5 SHOWN

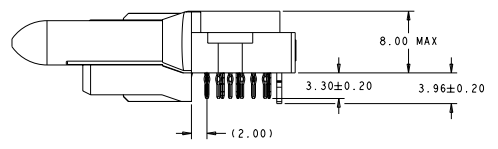
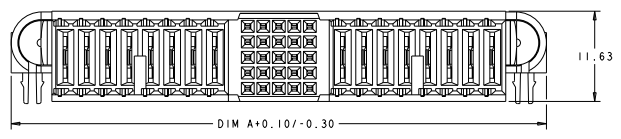
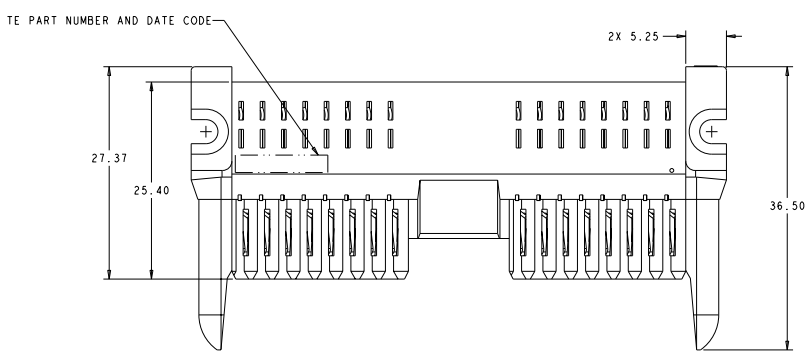
- HOUSING: GLASS FILLED LIQUID CRYSTAL POLYMER, COLOR: BLACK, UL 94 V-0 RATED
 SIGNAL CONTACT: PHOSPHOR BRONZE
 SIGNAL OVERMOLD: GLASS FILLED POLYESTER
 POWER CONTACT: COPPER ALLOY
 BOARD LOCKS: PHOSPHOR BRONZE
 - SIGNAL CONTACT: 0.00127mm MIN NICKEL ALL OVER,
 MATING AREA: 0.00076mm MIN GOLD OR 0.00008mm MIN GOLD OVER
 0.00076mm MIN PALLADIUM-NICKEL
 TAIL AREA: 0.0005mm MIN MATTE TIN
 POWER CONTACT: 0.00127mm MIN NICKEL ALL OVER,
 MATING AREA: 0.00076mm MIN GOLD OR
 0.00008mm MIN GOLD OVER 0.00076mm MIN PALLADIUM-NICKEL,
 TAIL AREA: 0.0005mm MIN MATTE TIN
 BOARD LOCKS: 0.00076mm MIN MATTE TIN OVER 0.00127mm MIN NICKEL.
 - CONTACT MATING AREA LUBRICATED WITH BELLCORE APPROVED LUBRICANT,
 TECHNICAL REFERENCE: GR-1217-CORE, ISSUE 1, NOVEMBER 1995.
 - THIS CONNECTOR EMPLOYS UL RECOGNIZED Z-PACK 2mm HM SIGNAL CONTACTS
- △ DATUMS AND BASIC DIMENSIONS TO BE ESTABLISHED BY CUSTOMER.
 - △ PC BOARD THICKNESS 1.4mm MIN, FOR WAVE SOLDER PC BOARD THICKNESS 2.62 MAX
 - △ SEE APPLICATION SPEC 114-13215 FOR PLATED THROUGH HOLE INFORMATION
 - △ SEE CUSTOMER DRAWING 1926720 OR 1926722 FOR MATING CONNECTOR
 - △ UNPLATED HOLES

DIM	H	DIM	G	F	E	D	C	DIM	B	DIM	A	DESCRIPTION	PART NUMBER
3.50	5.00	48	25	7	4	63.39	68.99	8P	X	25S	X	8P	2-1926721-5
4.125	5.625	36	15	5	2	49.64	55.24	6P	X	15S	X	6P	1-1926721-6
4.125	5.625	12	15	1	2	27.64	33.24	2P	X	15S	X	2P	1926721-2

DIMENSIONS: mm TYPICAL DIMENSIONS: mm DIMENSIONS: INCHES TYPICAL DIMENSIONS: INCHES	MANUFACTURING: ZEROVOLT RELEASE: ZEROVOLT 100-2283 114-13215 CUSTOMER DRAWING	TSC Electronics Harrisburg, PA 17105-3600 RECEPTACLE ASSEMBLY - RIGHT ANGLE, PASSIVE GUIDE, POWER/SIGNAL/POWER, WITH BOARD LOCKS, MULTIPACK HDL. SIZE: CASE CODE: 1926721-5 ORDER: A 00779 1926721
--	---	--

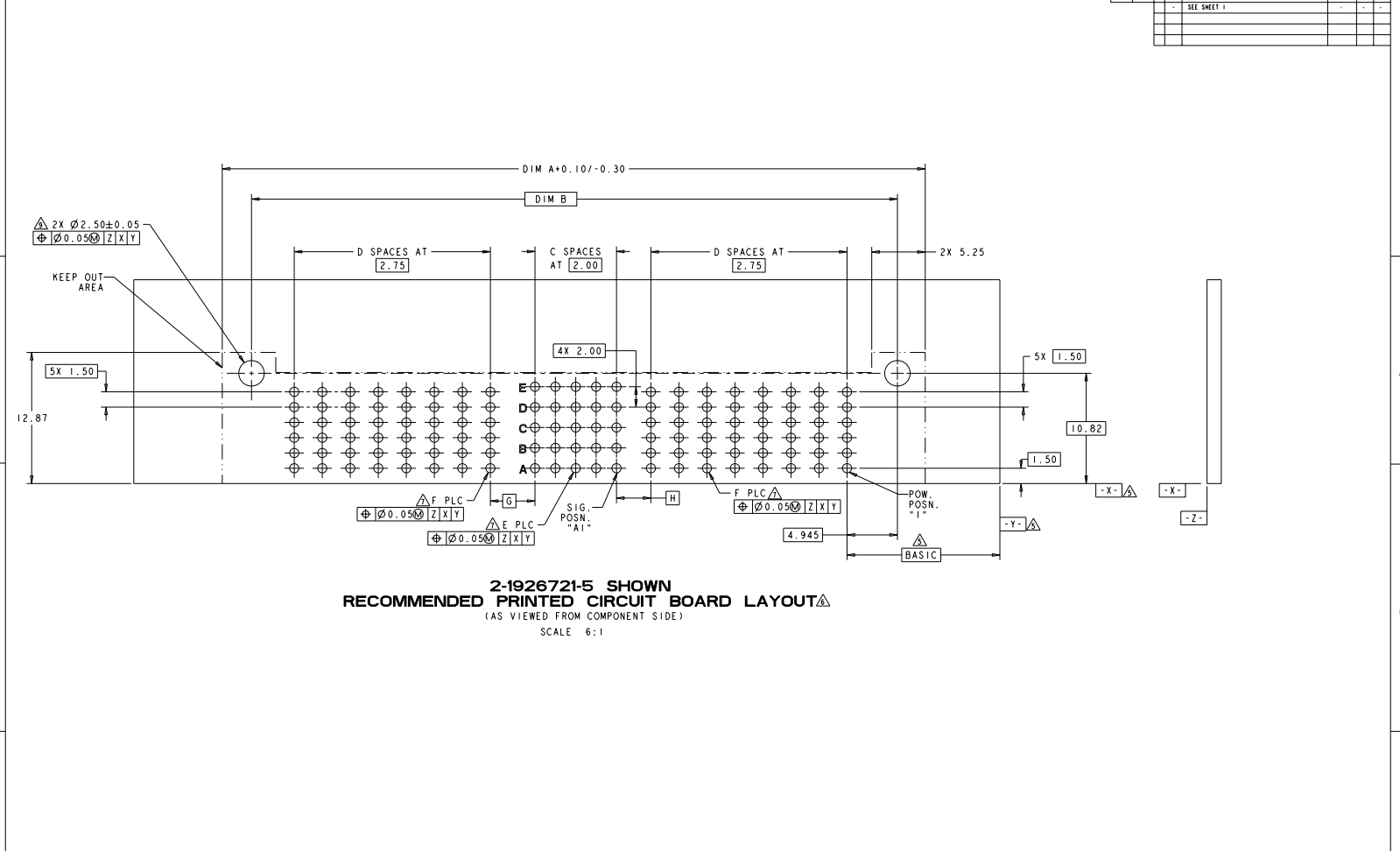
DATE SHOWN IN DIMENSIONS RECEIVED FOR FABRICATION
 © 2007-2012 BY TECE ELECTRONICS CORPORATION. ALL RIGHTS RESERVED.

REVIS		REVISIONS			
NO.	DATE	BY	DESCRIPTION	DATE	APP.
AA	00		SEE SHEET 1		



DATE: 12/12/11 DRAWN BY: J. ZERVOY CHECKED BY: J. ZERVOY APPROVED BY: J. ZERVOY		MANUFACTURED BY: ZERVOY DESIGNED BY: ZERVOY PART NO.: 188-2283 SPECIFICATION NO.: 114-13215		Tece Electronics Harrisburg, PA 17105-3600	
DIMENSIONS: mm TOLERANCES: UNLESS OTHERWISE SPECIFIED FINISH: AS SHOWN MATERIAL: SEE NOTE 1 PART: SEE NOTE 2		CUSTOMER DRAWING		RECEPTACLE ASSEMBLY - RIGHT ANGLE, PASSIVE GROUND, POWER/SIGNAL/POWER, WITH BOARD LOCKS, MINI-PARK HDL SIZE: 188-2283 REV: A DATE: 12/12/11 DRAWN BY: J. ZERVOY CHECKED BY: J. ZERVOY APPROVED BY: J. ZERVOY	
SHEET: 1 TOTAL SHEETS: 3		FIGURE: 4-11		SHEET: 2 OF 3 FILE: 188-2283.DWG	

REV		DESCRIPTION		DATE	BY	CHK
AA	00		SEE SHEET 1			



2-1926721-5 SHOWN
RECOMMENDED PRINTED CIRCUIT BOARD LAYOUT
 (AS VIEWED FROM COMPONENT SIDE)
 SCALE 6:1

DATE: 08/14/2018 10:58:12 AM BY: PACE ELECTRONICS CORPORATION	REVISIONS FOR PUBLICATION BY: PACE ELECTRONICS CORPORATION, ALL RIGHTS RESERVED	2-1926721-5 100 HOLES Ø0.050 116-13215	REVISIONS AA 00 SEE SHEET 1	DATE: 08/14/2018 10:58:12 AM BY: PACE ELECTRONICS CORPORATION
--	--	---	-----------------------------------	--