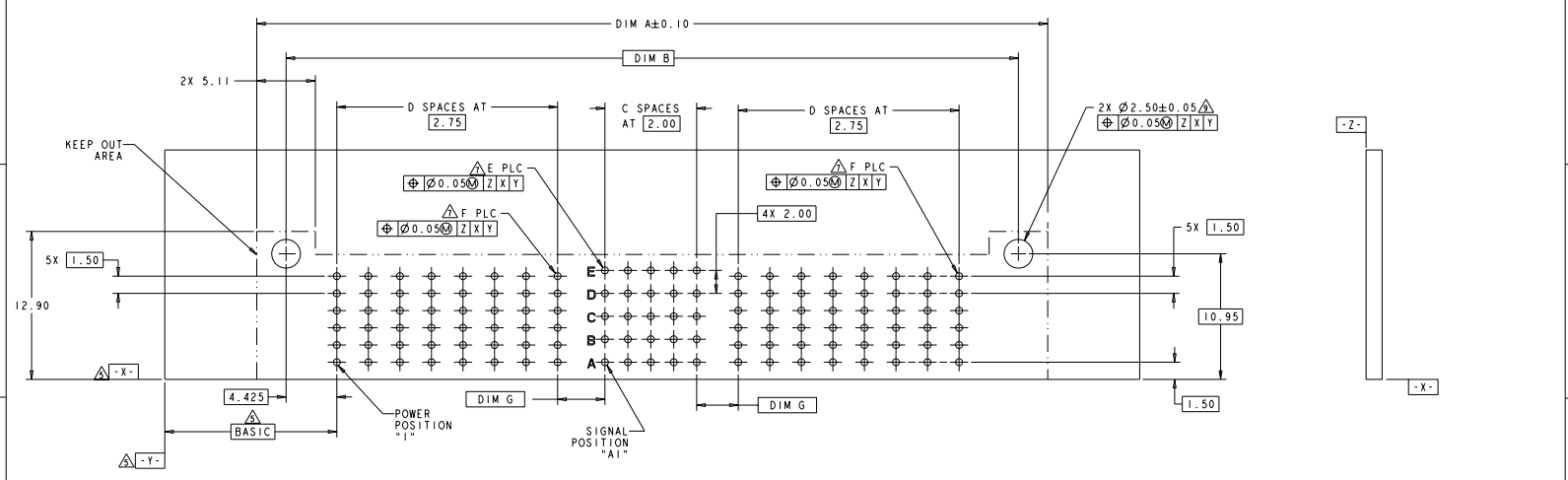


REV	DATE	DESCRIPTION	BY	CHK	APP
AA	00	SEE SHEET 1			



2-1926720-5 SHOWN
RECOMMENDED PRINTED CIRCUIT BOARD LAYOUT △
 (AS VIEWED FROM COMPONENT SIDE)
 SCALE 6:1

TTI ELECTRONICS CORPORATION 10000 WILSON BLVD WILSON, PA 17157-3600		TTI ELECTRONICS HARRISBURG, PA 17105-3600	
DRAWN BY: J. REISER CHECKED BY: J. REISER DATE: 07/20/15 SCALE: 6:1 SHEET: 1 OF 3	PART NO: 2-1926720-5 REV: 00 CUSTOMER: TTI ELECTRONICS CORPORATION	TITLE: ASSEMBLY, RIGHT ANGLE PLUG, POWER/SIGNAL/POWER, PASSIVE GUIDE, WITH BOARDLOCK, MINI-PARK HOLE	DRAWING NO: 00779 PART NO: 2-1926720-5 REV: 00 SHEET: 1 OF 3