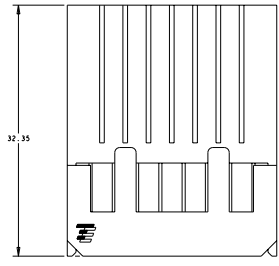
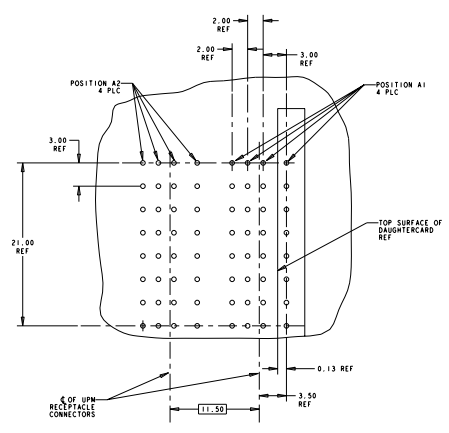
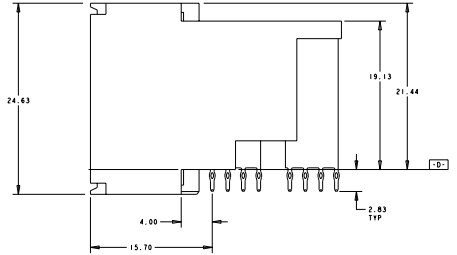
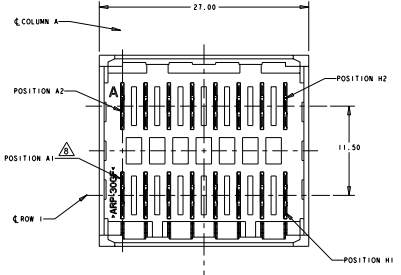
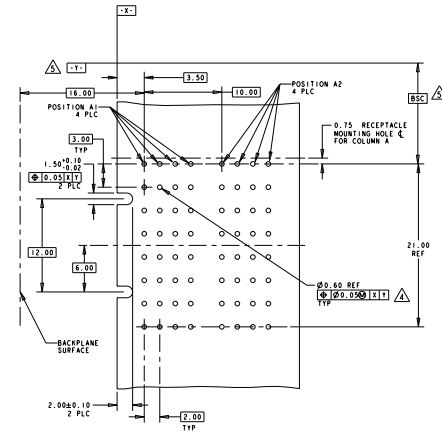
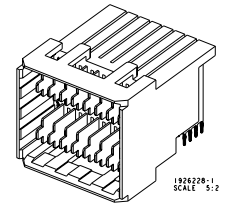
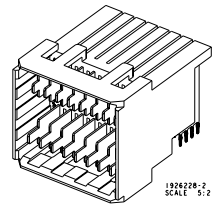


REV	DATE	DESCRIPTION	BY	CHK	APP
A	01/22/2007	RELEASED PER ECO-08-031646	DMC/COM	RG	PD

MATING RECEPTACLE PCB LAYOUT



- △ MATERIAL: HOUSING: POLYESTER, COLOR: BLACK, UL 94 V-0 CONTACT: COPPER ALLOY.
- △ FINISH: CONTACT MATING AREA: 0.00076 mm MIN GOLD PLATE OVER 0.00127 mm MIN NICKEL, OR 0.0005 mm MIN GOLD OVER 0.00064 mm PALLADIUM-NICKEL OVER 0.00127 mm MIN NICKEL. COMPLIANT TAIL AREA: 0.0005 mm MIN BRIGHT TIN-LEAD PLATE OVER 0.00127 mm NICKEL UNDERPLATE.
- △ TAILS OF MATING UPM STYLE RECEPTACLE ARE OFFSET BY .75 mm FROM TAILS OF THIS CONNECTOR. SEE CUSTOMER DRAWING 120992 FOR RECEPTACLE EXAMPLE. SEE APPLICATION SPEC 114-1103 FOR MORE DETAILED DESCRIPTION OF THE TAIL OFFSETS.
- △ PC BOARD HOLE SPECIFICATIONS:  
 DRILLED HOLE SIZE: 0.700±0.02 mm  
 FINISHED HOLE SIZE: 0.60±0.05 mm  
 PLATING THICKNESS:  
 0.025 - 0.050 mm COPPER  
 0.004 - 0.010 mm HASL TIN/LEAD  
 0.0005 mm MIN IMMERSION TIN  
 0.0002 - 0.0005 mm OSP  
 0.0001mm MIN IMMERSION SILVER  
 0.0001-0.0005 mm IMMERSION GOLD OVER 0.004-0.005 mm NICKEL
- △ DATUM AND BASIC DIMENSIONS ESTABLISHED BY CUSTOMER.
- △ MINIMUM REQUIRED PC BOARD THICKNESS IS 1.44mm.
- 7. CONTACT AREA LUBRICATED WITH BELLCORE APPROVED LUBRICANT. TECHNICAL REFERENCE GR-1217-CORE, ISSUE 1 NOVEMBER 1995.
- △ POSITION A1 IS AT MATERIAL ID.



RECOMMENDED PCB LAYOUT

REV	DATE	DESCRIPTION	BY	CHK	APP
A	01/22/2007	RELEASED PER ECO-08-031646	DMC/COM	RG	PD

REV	DATE	DESCRIPTION	BY	CHK	APP
A	01/22/2007	RELEASED PER ECO-08-031646	DMC/COM	RG	PD

REV	DATE	DESCRIPTION	BY	CHK	APP
A	01/22/2007	RELEASED PER ECO-08-031646	DMC/COM	RG	PD

REV	DATE	DESCRIPTION	BY	CHK	APP
A	01/22/2007	RELEASED PER ECO-08-031646	DMC/COM	RG	PD

REV	DATE	DESCRIPTION	BY	CHK	APP
A	01/22/2007	RELEASED PER ECO-08-031646	DMC/COM	RG	PD

REV	DATE	DESCRIPTION	BY	CHK	APP
A	01/22/2007	RELEASED PER ECO-08-031646	DMC/COM	RG	PD