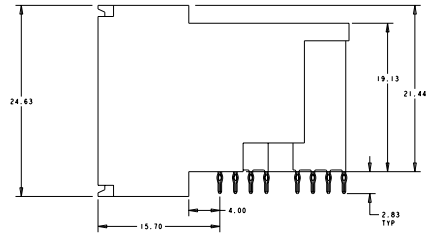
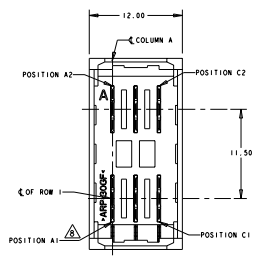
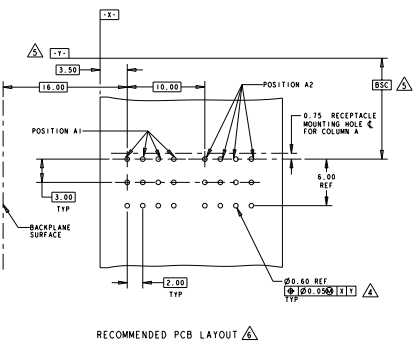
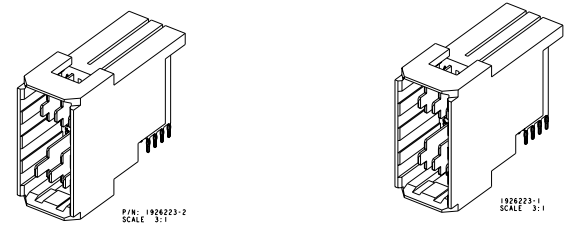
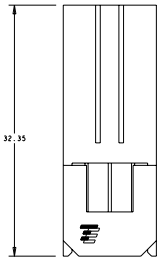
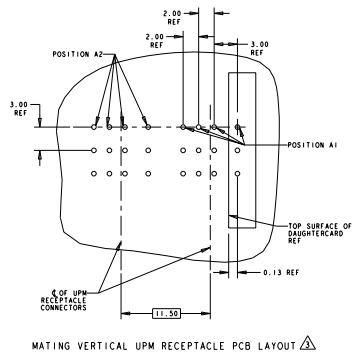


REV	DATE	DESCRIPTION	BY	CHK	APP
A		RELEASED PER ECO-08-031666	EMERSON	RG	PD
A1		ADD NEW DASH NUMBER	EMERSON	OL	ST
A2		REV PER ECO-10-00929	EMERSON	OL	ST

- △ MATERIAL: HOUSING: POLYESTER. COLOR: BLACK, UL 94 V-0 CONTACT: COPPER ALLOY.
- △ FINISH: CONTACT MATING AREA: 0.00076 mm MIN GOLD PLATE OVER 0.00127 mm MIN NICKEL, OR 0.0005 mm MIN GOLD OVER 0.00064 mm PALLADIUM-NICKEL OVER 0.00127 mm MIN NICKEL. COMPLIANT TAIL AREA: 0.0005 mm MIN BRIGHT TIN-LEAD PLATE OVER 0.00127 mm NICKEL UNDERPLATE.
- △ TAILS OF MATING UPM STYLE RECEPTACLE ARE OFFSET BY 0.75 mm FROM TAILS OF THIS CONNECTOR. SEE CUSTOMER DRAWING 120992 FOR RECEPTACLE EXAMPLES. SEE APPLICATION SPEC 114-1103 FOR MORE DETAILED DESCRIPTION OF THE TAIL OFFSETS.
- △ PC BOARD HOLE SPECIFICATIONS:
 DRILLED HOLE SIZE: 0.700±0.02 mm
 FINISHED HOLE SIZE: 0.60±0.05 mm
 PLATING THICKNESS:
 0.025 - 0.050 mm COPPER
 0.004 - 0.010 mm HASL TIN/LEAD
 0.0005 mm MIN IMMERSION TIN
 0.0002 - 0.0005 mm OSP
 0.0001mm MIN IMMERSION SILVER
 0.0001-0.0005 mm IMMERSION GOLD OVER 0.004-0.005 mm NICKEL
- △ DATUM AND BASIC DIMENSION ESTABLISHED BY CUSTOMER.
- △ MINIMUM REQUIRED PC BOARD THICKNESS IS 1.44mm.
- 7. CONTACT AREA LUBRICATED WITH BELLCORE APPROVED LUBRICANT. TECHNICAL REFERENCE GR-1217-CORE, ISSUE 1 NOVEMBER 1995.
- △ POSITION A1 IS AT MATERIAL ID.



REV	DATE	DESCRIPTION	BY	CHK	APP
B1		C1	A1, A2, B2, C2	1926223-3	
		A1, B1, C1	A2, B2, C2	1926223-2	
			A1	1926223-1	

SHORT PIN LOCATION	LONG PIN LOCATION	MIDDLE PIN LOCATION	PART NO

DATE: 00779	SCALE: 3:1	REV: 1	BY: MCAZ
-------------	------------	--------	----------