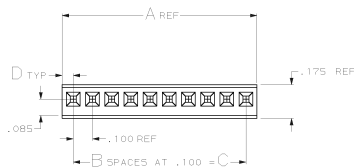
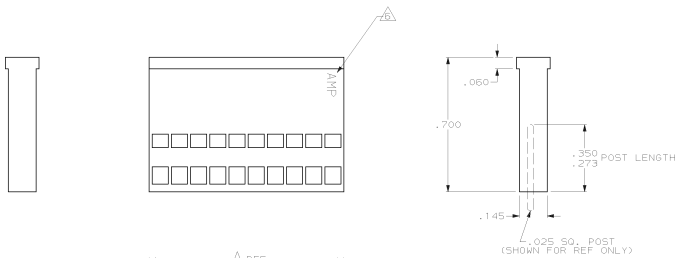


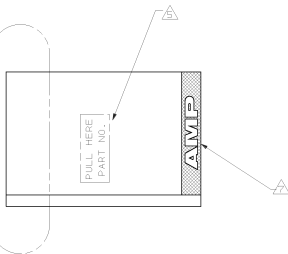
REV. NO.		DATE		DESCRIPTION		BY		APPD.	
AD	39			U2	REVISED PER ECO-11-008140	JUMARI	HMR		

PRODUCT INSTRUCTION

PULL ON HOUSING TO REMOVE FROM POSTS.
DO NOT CONFINE THE CONDUCTORS OR PULL ON THE
CONDUCTORS DURING REMOVAL ACTION.



SEE DETAIL Z



- HOUSING ACCEPTS LOCKING CLIP CONTACT PART NO. 87124, 87165, 87190, 87191, 8 MATES WITH .025 SQ. POSTS.
 - HOUSING: GLASS FILLED NYLON.
 - HOUSING: GLASS FILLED POLYESTER.
 - CORE PIN SUPPORT HOLES ARE OPTIONAL, AND MAY BE ROUND OR SQUARE OR MAY NOT BE PRESENT AT ALL.
 - MARKED (WHITE) AS SHOWN, THIS SIDE ONLY, WITH .06 HIGH CHARACTERS APPROX. IN CENTER OF HOUSING.
 - "PULL HERE" AND PART NO. TO APPEAR ON HOUSINGS 6 POSITION AND LARGER.
 - RAISED AMP LOGO MOLDED IN HOUSING.
 - TEXTURED AMP LOGO MOLDED IN HOUSING. LOGO MAY APPEAR ON EITHER END OF HOUSING.
- OBsolete PARTS: OBSOLETE CIS STREAMLINING PER D.RENAUD/D.SINIS

NOTES	MAT'L	COLOR	D	C	B	A	POS	PART NUMBER (AS MOLDED)	PART NUMBER (STAMPED)
DO NOT SCALE PRINT. UNLESS SPECIFIED, DIMENSIONS IN INCHES. TOLERANCES: .01" ± .005" DEC. # .005" MAXES. 4 8 10"	OR 11-16-89 6 KEYS	OR 11-28-89 3 KEYS	OR 11-28-89 3 KEYS	OR 11-28-89 3 KEYS	OR 11-28-89 3 KEYS	OR 11-28-89 3 KEYS	OR 11-28-89 3 KEYS	OR 11-28-89 3 KEYS	OR 11-28-89 3 KEYS
SUPERSEDED BY 87175-2	OBsolete	BROWN .058	1.300	3	.416	4	3-87175-4	3-87175-4	3-87175-4
SUPERSEDED BY 87175-2	OBsolete	YELLOW .054	0	0	.108	1	3-87175-4	3-87175-4	3-87175-4
SUPERSEDED BY 87175-2	OBsolete	ORANGE .054	0	0	.108	1	3-87175-3	3-87175-3	3-87175-3
SUPERSEDED BY 87175-2	OBsolete	RED .054	0	0	.108	1	3-87175-2	3-87175-2	3-87175-2
	OBsolete	BROWN .054	0	0	.108	1	3-87175-2	3-87175-2	3-87175-2
	OBsolete	BLACK .058	1.300	13	1.416	14	3-87175-0	3-87175-0	3-87175-0
	OBsolete	BLACK .058	1.200	12	1.316	13	2-87175-8	2-87175-8	2-87175-8
	OBsolete	BLACK .058	1.100	11	1.216	12	2-87175-6	2-87175-6	2-87175-6
	OBsolete	BLACK .058	1.000	10	1.116	11	2-87175-4	2-87175-4	2-87175-4
	OBsolete	BLACK .058	.900	9	1.016	10	2-87175-2	2-87175-2	2-87175-2
	OBsolete	BLACK .058	.800	8	.916	9	2-87175-0	2-87175-0	2-87175-0
	OBsolete	BLACK .058	.700	7	.816	8	1-87175-8	1-87175-8	1-87175-8
	OBsolete	BLACK .058	.600	6	.716	7	1-87175-6	1-87175-6	1-87175-6
	OBsolete	BLACK .058	.500	5	.616	6	1-87175-4	1-87175-4	1-87175-4
	OBsolete	BLACK .058	.400	4	.516	5	1-87175-2	1-87175-2	1-87175-2
	OBsolete	BLACK .058	.300	3	.416	4	1-87175-0	1-87175-0	1-87175-0
	OBsolete	BLACK .058	.200	2	.316	3	87175-8	87175-8	87175-8
	OBsolete	BLACK .058	.100	1	.216	2	87175-6	87175-6	87175-6
	OBsolete	BLACK .058	1.400	14	1.516	15	87175-4	87175-4	87175-4
	OBsolete	BLACK .054	0	0	.108	1	87175-2	87175-2	87175-2

DO NOT SCALE PRINT. UNLESS SPECIFIED, DIMENSIONS IN INCHES. TOLERANCES: .01" ± .005" DEC. # .005" MAXES. 4 8 10"	OR 11-16-89 6 KEYS	OR 11-28-89 3 KEYS	OR 11-28-89 3 KEYS	OR 11-28-89 3 KEYS	OR 11-28-89 3 KEYS	OR 11-28-89 3 KEYS	OR 11-28-89 3 KEYS	OR 11-28-89 3 KEYS	OR 11-28-89 3 KEYS
SEE TABLE	OR 11-28-89 3 KEYS	OR 11-28-89 3 KEYS	OR 11-28-89 3 KEYS	OR 11-28-89 3 KEYS	OR 11-28-89 3 KEYS	OR 11-28-89 3 KEYS	OR 11-28-89 3 KEYS	OR 11-28-89 3 KEYS	OR 11-28-89 3 KEYS
FINISH	APPLICATION SPEC	114-25006	114-25006	114-25006	114-25006	114-25006	114-25006	114-25006	114-25006

CUSTOMER DRAWING