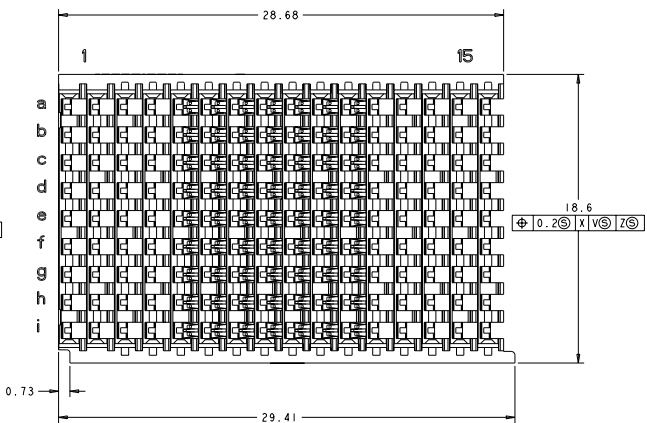
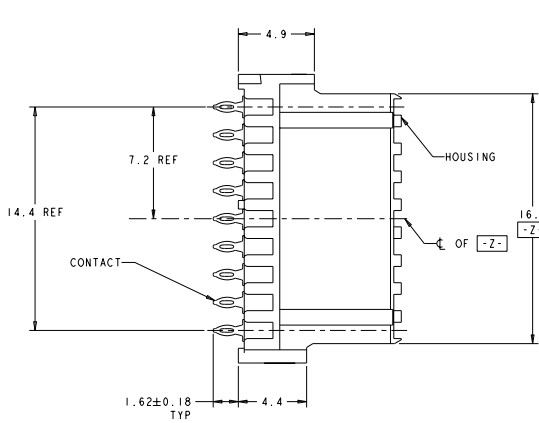
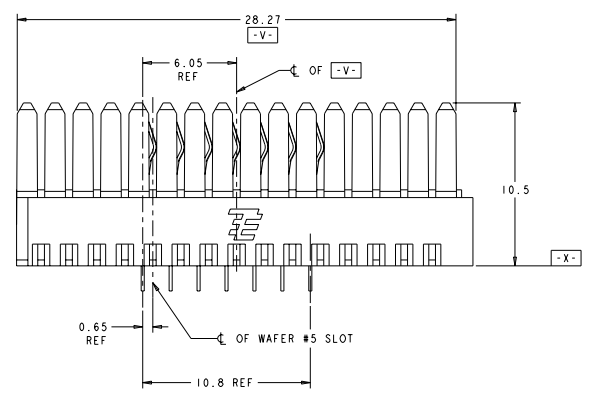
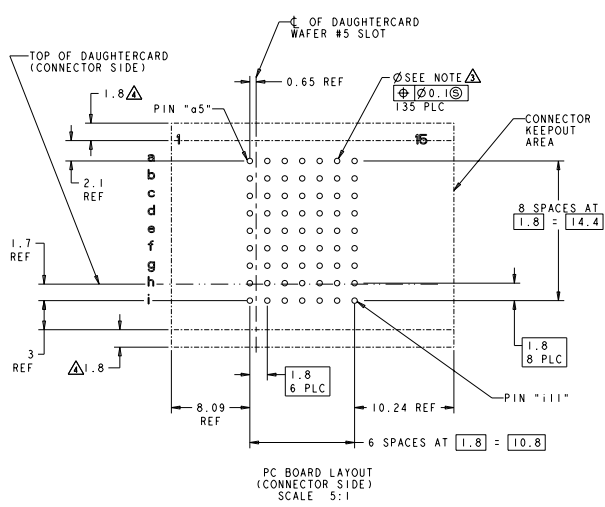


REVISED PER ECO-11-003271		DATE	BY	CHKD	APPD
B					



- △ HOUSING: LCP, UL94V0, COLOR: BLACK. CONTACT: PHOSPHOR BRONZE.
- △ FINISH: 1.27µm GOLD IN CONTACT AREA 1.27µm MIN. TIN-LEAD ON PCB TAIL OVER 3.81µm MIN. NICKEL OVER ALL.
- △ MANUFACTURING TOLERANCE FOR $\varnothing 0.56 \pm 0.05$ DIAMETER FINISHED HOLE WITH Sn /PB PLATING:
 DRILLED HOLE = $\varnothing 0.65 \pm 0.02$
 COPPER PLATING = 0.025-0.050
 Sn PB PLATING = 0.0038-0.0124
- OR
- △ MANUFACTURING TOLERANCE FOR $\varnothing 0.575 \pm 0.05$ DIAMETER FINISHED HOLE WITHOUT Sn /PB PLATING:
 DRILLED HOLE = $\varnothing 0.65 \pm 0.02$
 COPPER PLATING = 0.025-0.050
- △ ADDITIONAL CONNECTOR-SIDE KEEPCUT AREA REQUIRED IF CONNECTOR-SIDE EXTRACTION TOOL IS TO BE USED.



FOR USE WITH DAUGHTERCARDS ONLY

NOTES

1410992-3 PART NO

TE Connectivity

CONNECTOR ASSEMBLY, BACKPLANE, 15 COLUMN (7) COLUMNS, VERTICAL RECEPTACLE, CENTER 20 STAMP, MULTIGRID RT 2

DATE: 2006-06-28

REVISED PER ECO-11-003271

100-2012

114-13056

100779-1410992

CUSTOMER DRAWING