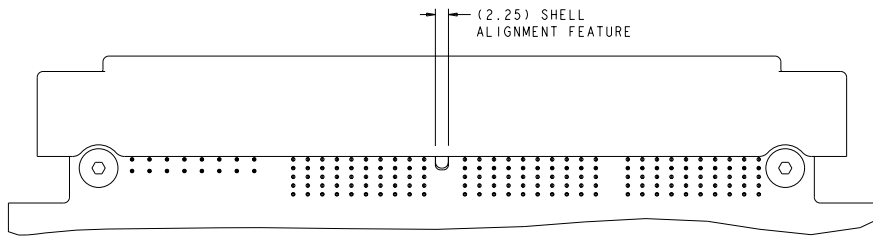
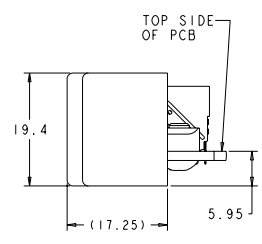
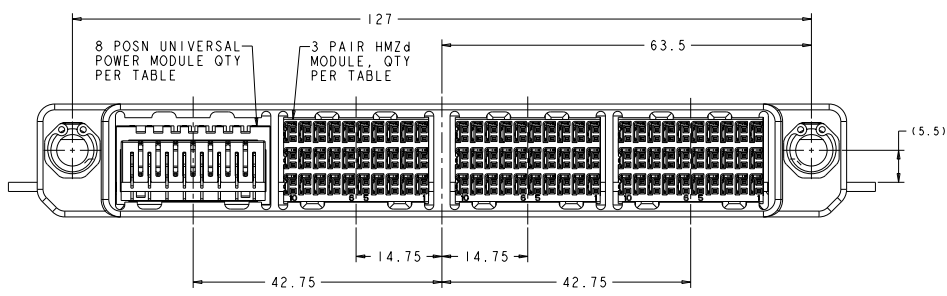
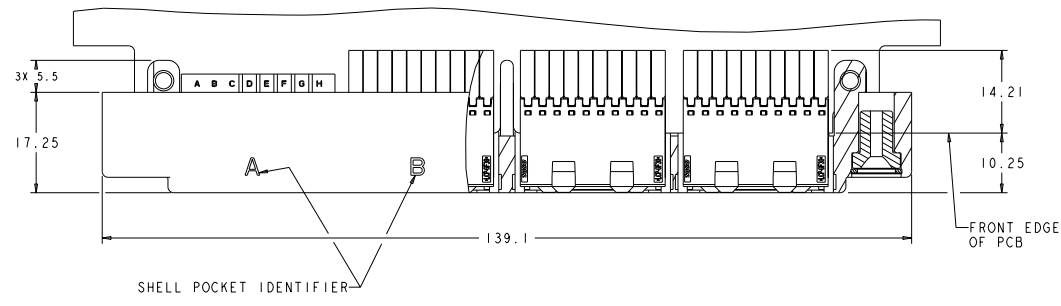


REV	DATE	DESCRIPTION	BY	CHK	APP
D	REV PER ECO 11-004119		J-20-11	CT	DM

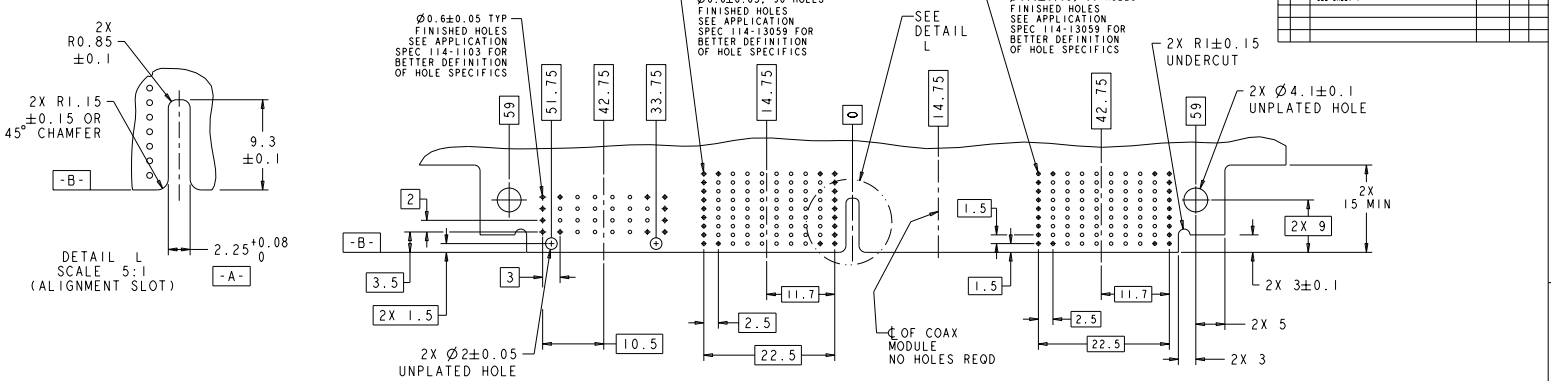


△	TIN-LEAD	1	-	1	2	2000667-5
△	--	--	-	-	-	2000667-4
△	TIN-LEAD	--	-	1	3	2000667-3
△	TIN	--	-	-	4	2000667-2
△	--	--	-	-	-	2000667-1
	TAIL PLATING	4 MT FIBER OPTIC MODULE	COAX	8 POSN UPM	3 PAIR HMZd	PART NUMBER
MODULE QTY PER ASSY						

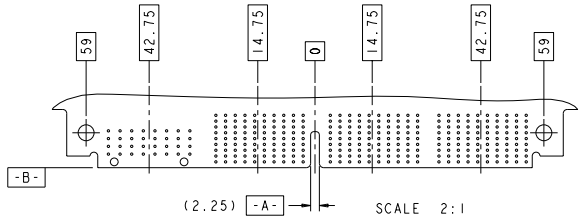
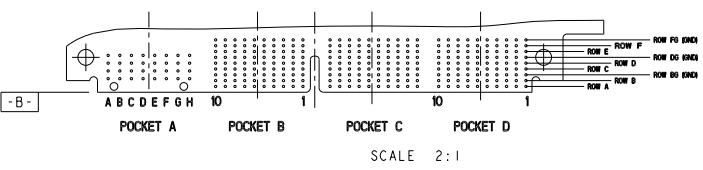
1. MATING CONNECTOR FOR THIS CONNECTOR IS 2000668.
 △ PRELIMINARY- NOT RELEASED FOR PRODUCTION.

DATE: 11/19/00 DRAWN BY: J. B. BROWN CHECKED BY: J. B. BROWN APPROVED BY: J. B. BROWN		DATE: 11/19/00 DESIGNED BY: J. B. BROWN CHECKED BY: J. B. BROWN APPROVED BY: J. B. BROWN		DATE: 11/19/00 CUSTOMER DRAWING: A PART NUMBER: 2000667	
TITLE: DAUGHTER CARD CONNECTOR HIGH SPEED RUGGEDIZED (HSR) 4 BAY, UNSCALED, RIGHT ANGLE		STATE: PA COUNTY: ALLEGANY CITY: HARRISBURG		CUSTOMER: [] DRAWN: [] CHECKED: [] APPROVED: []	

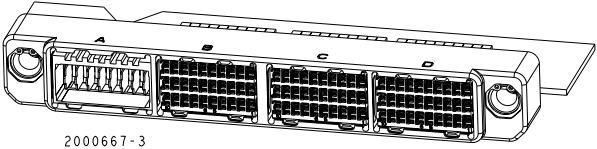
REVISONS		DATE	BY	APP
1	SEE SHEET 1			



RECOMMENDED PC BOARD HOLE LAYOUT AS VIEWED FROM TOP OF PC BOARD NO SPECIFIC PART NUMBER SHOWN



RECOMMENDED PC BOARD HOLE LAYOUT AS VIEWED FROM TOP OF PCB 2000667-3 SHOWN (3 HM-Zd MODULES AND 1 UPM MODULE)



2000667-3 SCALE 2:1

TYPH ELECTRONICS COMPANY		DATE: 08/24/78		BY: TYPH ELECTRONICS COMPANY	
PROJECT: 2000667-3		DRAWING: 110C2089		REV: 1	
DESCRIPTION: DAUGHTER CARD CONNECTOR, HIGH SPEED RUGGEDIZED (MSRP) 4 WAY, UNSALED, RIGHT ANGLE		SCALE: AS SHOWN TO		SHEET: 2 OF 2	
CUSTOMER DRAWING: A		PART NUMBER: 2000667		REV: 1	