

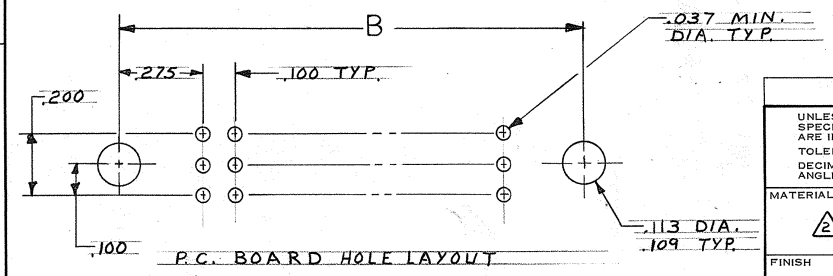
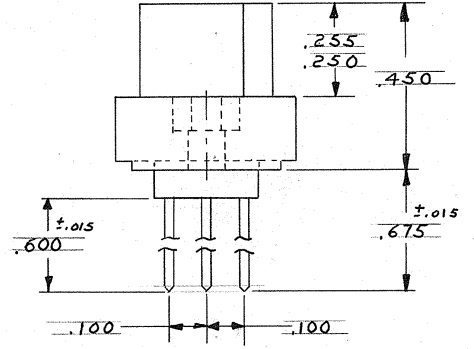
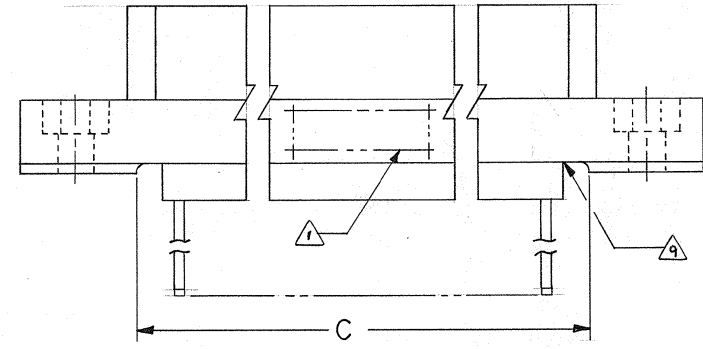
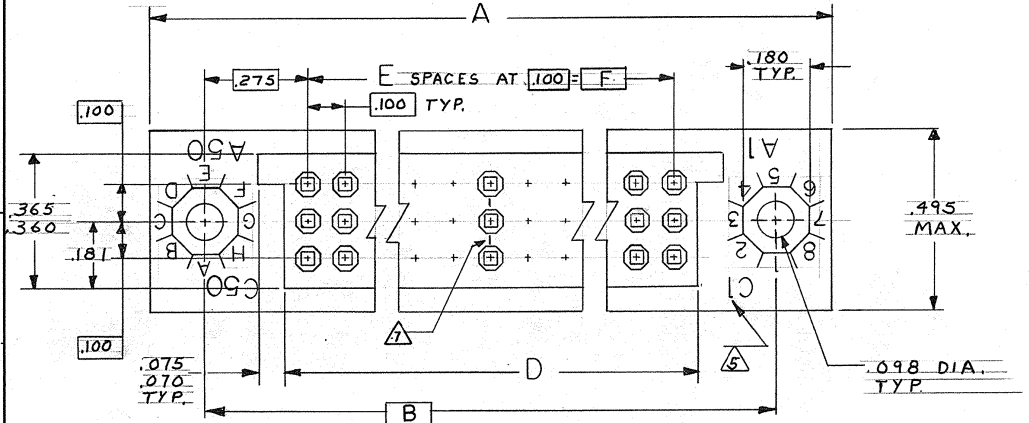
DRAWING MADE IN THIRD ANGLE PROJECTION

THIS DRAWING IS UNPUBLISHED. RELEASED FOR PUBLICATION

© COPYRIGHT 19 BY AMP INCORPORATED, HARRISBURG, PA. ALL INTERNATIONAL RIGHTS RESERVED. AMP PRODUCTS MAY BE COVERED BY U.S. AND FOREIGN PATENTS AND/OR PATENTS PENDING.

LOC DIST
AB 139

REVISIONS				DATE	APPROVED
P	F	Z	L	TR	
✓	✓	0	RELEASED	M.S.	2-86
		A	REV PER ECO-05-013297	VI-05	PY



UNLESS OTHERWISE SPECIFIED DIMENSIONS ARE IN INCHES. TOLERANCES ON: DECIMALS ±.010 ANGLES ±.010	CONTRACT NO	AMP AMP INCORPORATED Harrisburg, Pa. 17105
	DR <i>M. Smith</i> 2-26-86 CHK <i>E. A. Mc Dougle</i> 2-27-86 APPD <i>E. J. Mc Dougle</i> 2-27-86 APPD <i>J. Smith</i> 3/12/86	NAME RECEPTACLE ASSEMBLY .100 G, 3-ROW, W/MTG. EARS, BOX CONT. WIRE WRAP POSTS
	MATERIAL Δ Δ FINISH Δ	SIZE C FSCM NO 00779 DRAWING NO 534173
	OTHER APPD	SCALE 5:1 SHEET 1 OF 2

CUSTOMER DRAWING

AMP 1471-6 REV 2-81

DRAWING MADE IN THIRD ANGLE PROJECTION

3

2

1

LOC AB DIST 39

THIS DRAWING IS UNPUBLISHED. RELEASED FOR PUBLICATION . 19
© COPYRIGHT 19 BY AMP INCORPORATED, HARRISBURG, PA. ALL INTERNATIONAL RIGHTS RESERVED. AMP PRODUCTS MAY BE COVERED BY U.S. AND FOREIGN PATENTS AND/OR PATENTS PENDING.

P		ZONE	LTR	DESCRIPTION	DATE	APPROVED
✓				A SEE SHT. 1		

- △ AMP PART NUMBER AND DATE CODE INK STAMPED WHITE THIS AREA
- △ HOUSING: VAPOR PHASEABLE THERMOPLASTIC COLOR: BROWN
- △ CONTACT: BERYLLIUM COPPER OR COPPER-NICKEL-SILICONE
- △ .000050 GOLD OVER .000030 NICKEL
- △ LETTERS INDICATING OUTSIDE ROWS AND NUMBERS INDICATING END CAVITIES STAMPED WHITE THIS SURFACE.
- 6. MIL-C-55302 INSPECTION REQUIRED.
- △ LINES INDICATING EVERY FIVE CAVITIES STAMPED ON MATING FACE.
- 8. MOLD BEING USED IS NOT PRODUCTION TOOLED.
- △ STABILIZERS ARE EPOXIED TO HOUSING.

4.900	49	5.024	5.125	5.450	5.750	150	534173-1	
REMARKS							No. of Pos.	PART NO
UNLESS OTHERWISE SPECIFIED DIMENSIONS ARE IN INCHES. TOLERANCES ON: DECIMALS $\pm .010$ ANGLES \pm		CONTRACT NO		AMP AMP INCORPORATED Harrisburg, Pa. 17105				
MATERIAL		DR <i>M. Smith</i> 2-26-86 CHK <i>F. A. McDougle</i> 2-27-86 APPD <i>E. V. McNamee</i> 2-27-86 APPD <i>J. Hoff</i> 3/10/86		NAME RECEPTACLE ASSEMBLY, 100 9, 3-ROW, W/ MTG EARS, BOX CONT, WIRE WRAP POSTS.				
FINISH		DSGN APPD		SIZE C	FSCM NO 00779	DRAWING NO 534173		
		OTHER APPD		SCALE		SHEET 2 of 2		

AMP 1471-6 REV 2-81

CUSTOMER DRAWING