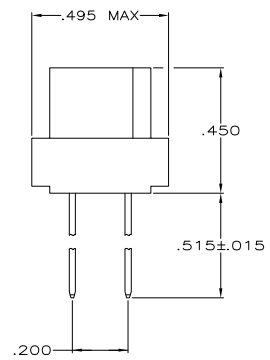
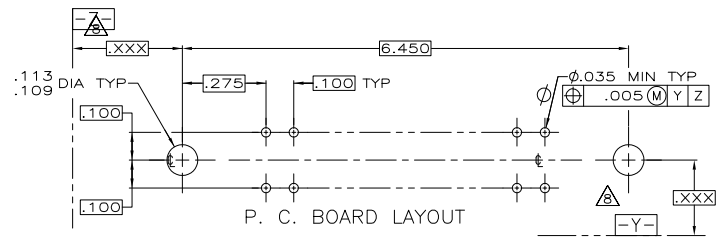


LOC		DST		REVISIONS			
DF	FO	F	LR	DESCRIPTION	DATE	MIN	APD
		C		REV PER ECO 05-013561	06DEC05	VF	CT

- △ (774444-7), AMP, DATE CODE, AMP P/N, MARKED THIS AREA.
- △ HOUSING MATERIAL: POLYPHENYLENE SULFIDE, GST-40F COLOR: BROWN
- △ CONTACT MATERIAL: BERYLLIUM COPPER (BeCu) OR COPPER-NICKEL-SILICON (CuNiSi).
- △ CONTACT FINISH: .000030 GOLD OVER .000030 NICKEL IN CONTACT AREA .000150 MIN BRIGHT TIN-LEAD (93/7) ON POSTS.
- △ LETTERS INDICATING OUTSIDE ROWS AND NUMBERS INDICATING END CAVITIES MARKED THIS AREA.
- △ LINES INDICATING EVERY FIVE CAVITIES MARKED ON MATING FACE.
- 7. ONLY ROWS A AND C ARE LOADED WITH CONTACTS.
- △ DATUM AND BASIC DIMENSIONS ESTABLISHED BY CUST.
- △ CONTACT FINISH: .000030 GOLD OVER .000030 NICKEL IN CONTACT AREA .000150 MIN MATTE TIN PER ASTM-B-545 ON POSTS.



△	5-448006-1
△	448006-1
FINISH	PART NO.



THIS DRAWING IS A CONTROLLED DOCUMENT.

DESIGNED BY: T. ALEXANDER	DATE: 5-27-92		Tyco Electronics Corporation Harrisburg, PA 17105-3608	
DRAWN BY: D. MILLER	DATE: 6-1-92			
APPROVED BY: W. FOLEY	DATE: 6-1-92	RECEPTACLE ASSEMBLY, 3-ROW BOX 100C/L, W/MOUNTING EARS, SELECT LOAD, AND 2-HIGH WIRE WRAP POSTS		
MATERIAL: -△△△	FINISH: -△	SIZE: A2	CAGE CODE: 00779	REV: C

CUSTOMER DRAWING SCALE: 4:1 SHEET: 1 of 1

AMP 1471-9 REV 31MAR2000