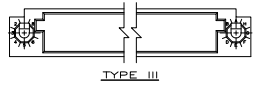
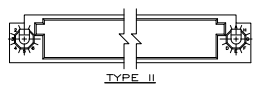
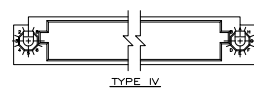
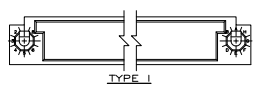
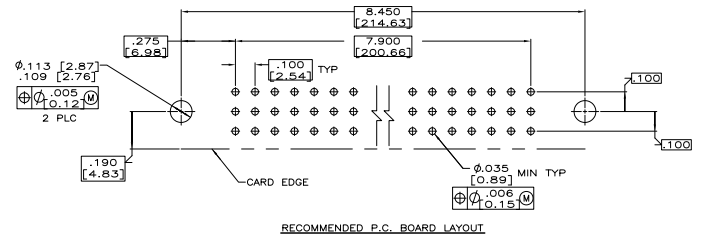
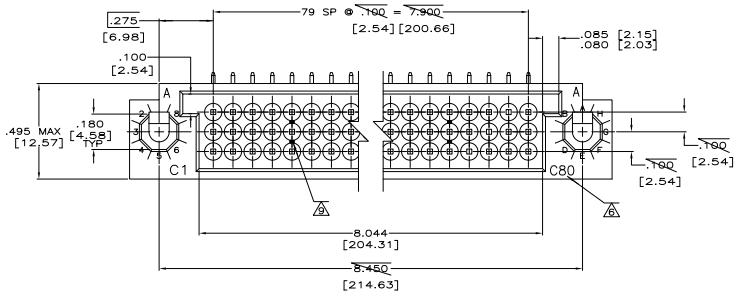
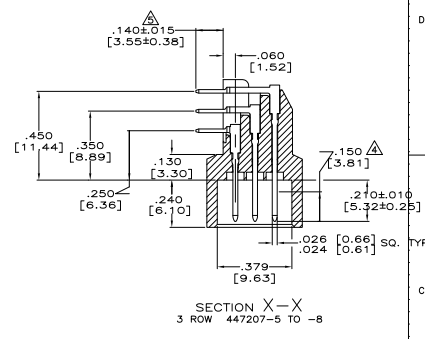
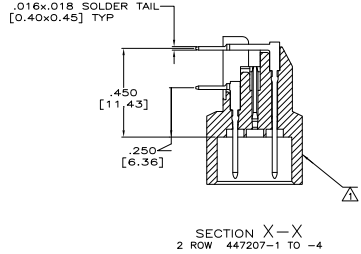
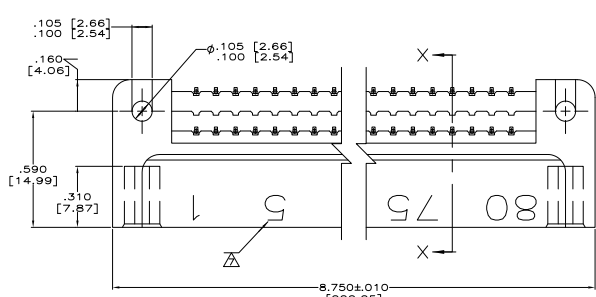


REV. NO.		DATE	BY	APP.
DF	F0			
C				



- △ MILITARY PART NO., 00779, DATE CODE, PART NO. AND AMP MARKED THIS SIDE.
- △ HOUSING MAT'L: POLYPHENYLENE SULFIDE, GST-40F PER MIL-M-24519.
- △ CONTACT MAT'L: BRASS PER QQ-B-626.
- △ CONTACT FINISH: .000050" [0.00127] GOLD OVER .000050" [0.00127] NICKEL IN CONTACT AREA.
- △ CONTACT FINISH: .000100" [0.00254] TIN-LEAD OVER .000050" [0.00127] NICKEL.
- △ LETTERS INDICATING OUTSIDE ROWS AND NUMBERS INDICATING END CAVITIES (ROW C ONLY) MARKED ON THIS SURFACE.
- △ NUMBERS INDICATING EVERY FIVE CAVITIES MARKED, BOTH SIDES.
- 8. MEETS ALL REQUIREMENTS OF MIL-C-55302.
- △ LINES INDICATING EVERY FIVE CAVITIES MARKED ON MATING FACE EXCEPT END CAVITIES STARTING FROM POSN. #1.

MILITARY P/N	NO. OF CONTACTS	TYPE	NO. OF POSN	PART NO.
M55302-129-08	240	IV	240	447207-8
M55302-129-07	240	I I	240	447207-7
M55302-129-06	240	I I	240	447207-6
M55302-129-05	240	I	240	447207-5
M55302-129-04	160	IV	240	447207-4
M55302-129-03	160	I I I	240	447207-3
M55302-129-02	160	I I	240	447207-2
M55302-129-01	160	I	240	447207-1

THIS DRAWING IS A CONTROLLED DOCUMENT. I.C. THOMAS 1-18-70
 MILLER 1-28-70
 THE ELECTRONICS CORPORATION
 HARRISBURG, PA 17105-2608

DESIGNER: J. MILLER
 CHECKED: J. MILLER
 APPROVED: J. MILLER

REVISED: 1-18-70
 BY: J. MILLER
 REASON: REVISED TO MEET MIL-C-55302

DATE: 1-18-70
 DRAWING NO: 447207
 SHEET: 1 OF 1

CUSTOMER DRAWING: YES