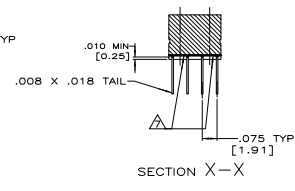
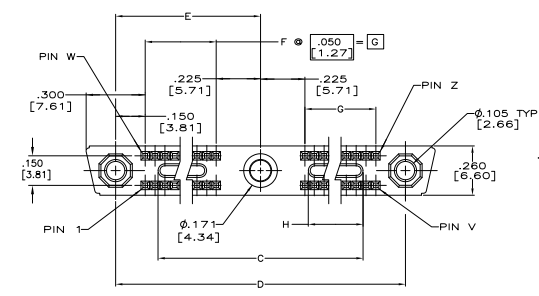
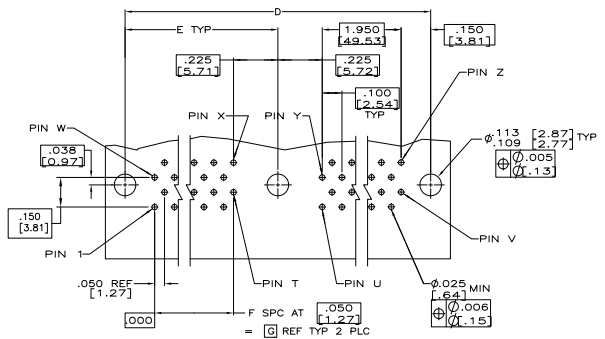
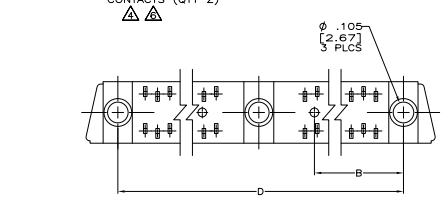
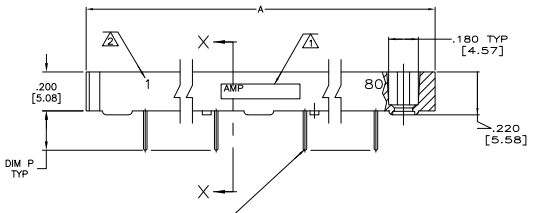


THIS DRAWING IS UNPUBLISHED
 ALL RIGHTS RESERVED

REV	DATE	DESCRIPTION	BY	CHK	APP
0		REV PER ECD 11-02284			



- ▲ AMP, AMP PART NO. AND DATE CODE MARKED IN THIS APPROXIMATE AREA.
- ▲ NUMBERS INDICATING END POSITIONS MARKED THIS SIDE ONLY.
- 3. MEETS ALL APPLICABLE REQUIREMENTS OF MIL-C-55302.
- ▲ FINISH: .00050 [0.0012] GOLD PER MIL-C-45204 OVER NICKEL PER QQ-299 IN CONTACT AREA. REMAINDER OF CONTACT TIN-LEAD OVER NICKEL.
- ▲ HOUSING MATERIAL: LIQUID CRYSTAL POLYMER PER MIL-M-24519, GLCP-30F, COLOR: GRAY.
- ▲ CONTACT MATERIAL: PHOS BRONZE PER QQ-B-750
- ▲ EPOXY IS ADDED TO BOTTOM OF HOUSING TO PREVENT MIGRATION OF FLUXES AND CONFORMAL COATING INTO THE CONTACT ENGAGEMENT AREA.



RECOMMENDED PRINTED CIRCUIT BOARD LAYOUT
 (CONNECTOR SIDE)

REMARKS	Z	Y	X	W	V	U	T	H	G	F	E	D	C	B	A	NUMBER OF CONTACTS	PART NUMBER			
160	121	120	81	80	41	40	1 & 80	.300 [7.62]	.230 [5.84]	1.800 [45.72]	1.950 [49.53]	39	2.325 [59.06]	4.650 [118.11]	4.200 [106.68]	1.162 [29.51]	4.950 [125.73]	160	1218531-2	
.200 [5.08]	160	121	120	81	80	41	40	1 & 80	.300 [7.62]	.230 [5.84]	1.800 [45.72]	1.950 [49.53]	39	2.325 [59.06]	4.650 [118.11]	4.200 [106.68]	1.162 [29.51]	4.950 [125.73]	160	1218531-1

THIS DRAWING IS A CONTROL DOCUMENT		BY: C. THOMAS #32-10	DATE: 11-17-11
DRAWN BY: J. MILLER #32-10		DATE: 11-17-11	
CHECKED BY: J. MILLER #32-10		DATE: 11-17-11	
APPROVED BY: J. MILLER #32-10		DATE: 11-17-11	
REVISIONS:		REV: 0	DATE: 11-17-11
DESCRIPTION: RECEPTACLE ASSEMBLY, EXTENDED MINI-BOX WITH LOW FORCE CONTACTS, SPECIAL		REV: 0	DATE: 11-17-11
DRAWING NO: A100779		REV: 0	DATE: 11-17-11
CUSTOMER DRAWING		REV: 0	DATE: 11-17-11