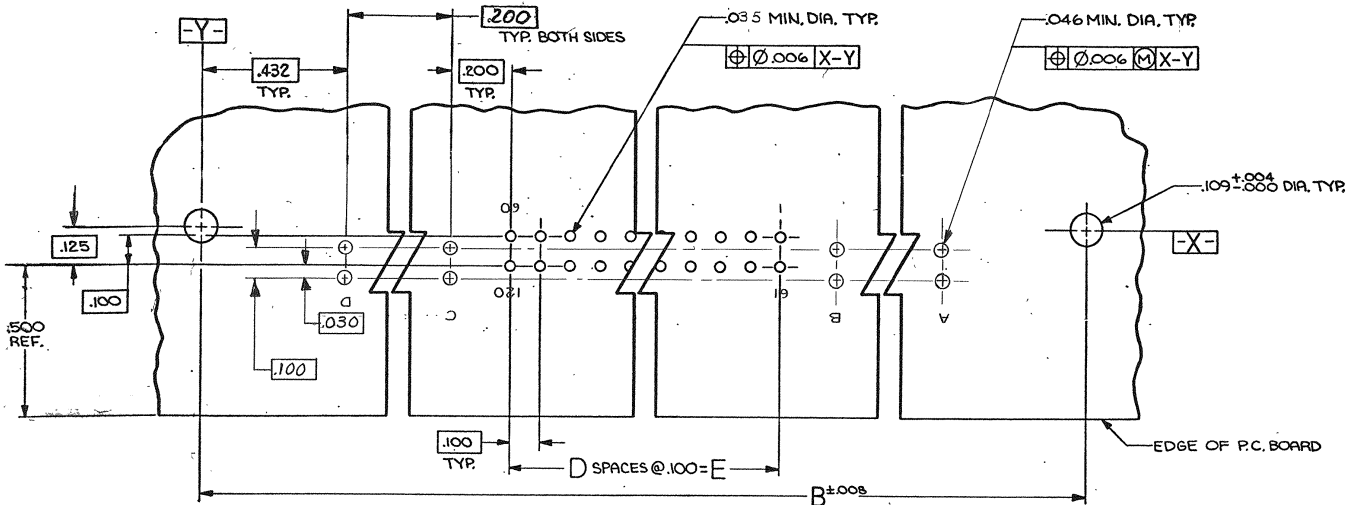


DRAWING MADE IN THIRD ANGLE PROJECTION

THIS DRAWING IS UNPUBLISHED. RELEASED FOR PUBLICATION 19
 © COPYRIGHT 19 BY AMP INCORPORATED, HARRISBURG, PA. ALL INTERNATIONAL RIGHTS RESERVED. AMP PRODUCTS MAY BE COVERED BY U.S. AND FOREIGN PATENTS AND/OR PATENTS PENDING.

P		Z		L		R		REVISIONS	
NO.	DATE	NO.	DATE	NO.	DATE	NO.	DATE	DESCRIPTION	DATE APPROVED
1								(SEE SHEET 1 OF 2)	



RECOMMENDED P.C. BOARD LAYOUT

- ⚠ COAX POS. (A, B, C & D) MARKED ON OPPOSITE SIDE ONLY
- ⚠ CONT. POS. MARKED ON OPPOSITE SIDE ONLY. NUMBERS INDICATING EVERY FIFTH CAVITY MARKED ON SIDE. NUMBERS INDICATING END CAVITIES MARKED ON MATING FACE.
- ⚠ AMP, P/N & DATE CODE MARKED THIS AREA
- ⚠ CONTACT FINISH: .000050 NICKEL UNDERPLATE ALL OVER, .000050 GOLD IN THIS AREA, .000100 TIN ON TAIL

⚠	1.900	19	3.175	3.565	3.855	4	40	5-533182-3
⚠	5.900	59	7.175	7.565	7.855	4	120	1-533182-0
⚠	OBS 4.900	49	6.175	6.565	6.855	4	100	7-9
⚠	OBS 4.400	44	5.675	6.065	6.355	4	90	7
⚠	OBS 3.900	39	5.175	5.565	5.855	4	80	7-6
⚠	OBS 3.400	34	4.675	5.065	5.355	4	70	7-5
⚠	OBS 2.400	24	3.675	4.065	4.355	4	50	7-4
⚠	1.900	19	3.175	3.565	3.855	4	40	7-3
⚠	1.400	14	2.675	3.065	3.355	4	30	7-2
⚠	OBS 2.900	29	4.175	4.565	4.855	4	60	533182-1

UNLESS OTHERWISE SPECIFIED DIMENSIONS ARE IN INCHES. TOLERANCES ON: DECIMALS ±.010 ANGLES ±	CONTRACT NO		AMP INCORPORATED Harrisburg, Pa. 17108		NO. OF COAX POS.	NO. OF CONT. POS.	PART NO.
	MATERIAL	DR <i>M. Smith</i> 6-7-84	NAME	BOX 1001 SERIES, PIN HEADER ASSEMBLY WITH COAX			
FINISH	CHK <i>D. Ryan</i> 4/1/84	ABPD <i>P. Ryan</i> 6/1/84	SIZE	FSCM NO.	DRAWING NO.	REV	
	OTHER APPD		C	00779	533182	H	
			SCALE				SHEET 2 OF 2

CUSTOMER DRAWING