

DRAWING MADE IN THIRD ANGLE PROJECTION

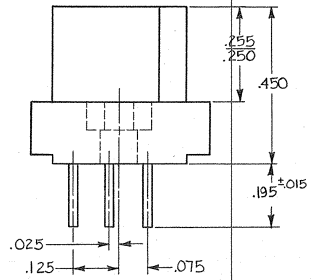
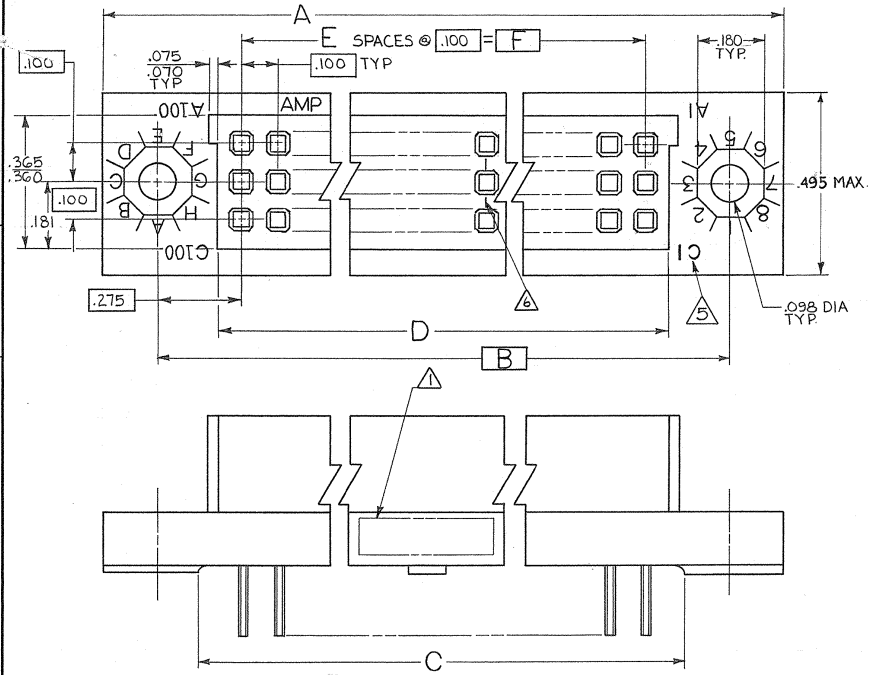
3

1

© COPYRIGHT 19 BY AMP INCORPORATED, HARRISBURG, PA.
ALL INTERNATIONAL RIGHTS RESERVED. AMP INCORPORATED PRODUCTS
COVERED BY U. S. AND FOREIGN PATENTS AND/OR PATENTS PENDING.

LOC DIST
DF

REV	ZONE	LTR	DESCRIPTION	DATE	APPROVED
01			ADDED 1-1 6499 m.s.	2-20-80	UBP
02			REVISED 6924 m.s.	10-80	PAO
A			REVISED FINISH 7226 m.s.	2-81	PAO
A1			ECN 7979 & 7982 WL	6-82	EAM
B			REV PER ECN AB0522 db	2-85	LAH
C			REV PER ECN AB-1454 db	3-86	EAM
D			REV PER DF-0117 IS	9/88	LAH
E			REV PER DF-6374 TA	9/97	LAH
F			REV 0600-5641-96 TT	9-97	LAH
G			REV PER DH14-0208-05	1-06	PY
H			REV PER ECD-07-004569	3-07	PY



- ▲ AMP, DATE CODE, AND PART NUMBER MARKED THIS AREA.
- ▲ HOUSING MATERIAL: POLYPHENYLENE SULFIDE GST-40F, PER MIL-M-2451B.
- ▲ CONTACT MATERIAL: BERYLLIUM COPPER (BeCu) OR COPPER NICKEL SILICONE (CuNiSi)
- ▲ FINISH: .000030 GOLD OVER .000030 NICKEL IN CONTACT AREA, .0001 TIN-LEAD ON SOLDER TAILS.
- ▲ LETTERS INDICATING OUTSIDE ROWS AND NUMBERS INDICATING END CAVITIES MARKED THIS SURFACE.
- ▲ LINES INDICATING EVERY FIVE CAVITIES MARKED ON MATING FACE.
- ▲ FINISH: .000030 GOLD OVER .000030 NICKEL IN CONTACT AREA, .0001 TIN ON SOLDER TAILS.

UNLESS OTHERWISE SPECIFIED DIMENSIONS ARE IN INCHES. TOLERANCES ON: DECIMALS ± .010 ANGLES ± .015		CONTRACT NO DR Debra Kelly 8-6-79	PART NO	
MATERIAL ▲▲	CHK W.A. Richardson Jr. 9/4/79	AMP AMP INCORPORATED Harrisburg, Pa.		
FINISH ▲▲	APPD W.A. Richardson Jr. 9/4/79	NAME RECEPTACLE ASSY, .100", 3 ROW W/ MOUNTING EARS, BOX CONTACT, SOLDER TAIL		
	DSGN APPD C.S. Richardson 9/10/79	SIZE CODE IDENT NO DRAWING NO C 00779 531138	REV H	
	OTHER APPD	SCALE 5:1	SHEET 1 OF 2	

CUSTOMER DRAWING

AMP 1471-6 REV 12-78

531138

DRAWING MADE IN THIRD ANGLE PROJECTION

3

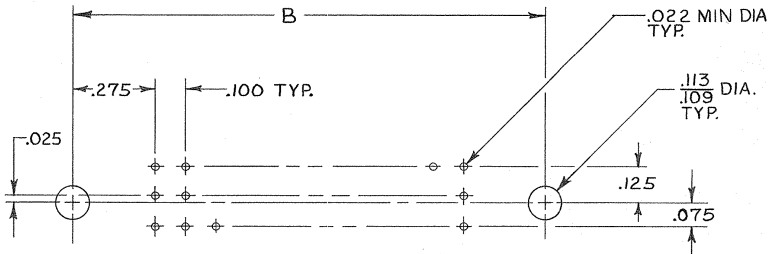
2

1

LOC DIST
DF 10

© COPYRIGHT 19 BY AMP INCORPORATED, HARRISBURG, PA.
ALL INTERNATIONAL RIGHTS RESERVED, AMP INCORPORATED PRODUCTS
COVERED BY U. S. AND FOREIGN PATENTS AND/OR PATENTS PENDING.

REVISIONS					
F	ZONE	LTR	DESCRIPTION	DATE	APPROVED
C SEE SHEET 1 J					



P.C. BOARD LAYOUT
(FLOW SOLDER TYPE)

4.900	49	5.024	5.125	5.450	5.750	150	5-531138-4
3.400	34	3.524	3.625	3.950	4.250	105	5-531138-2
2.900	29	3.024	3.125	3.450	3.750	90	5-531138-1
1.500	15	1.624	1.725	2.050	2.350	48	1-531138-6
9.900	99	10.024	10.125	10.450	10.750	300	1-531138-5
8.500	85	9.024	9.125	9.450	9.750	270	1-531138-4
6.400	64	6.524	6.625	6.950	7.250	195	1-531138-3
4.400	44	4.524	4.625	4.950	5.250	135	1-531138-2
3.200	32	3.324	3.425	3.750	4.050	99	1-531138-1
4.100	41	4.224	4.325	4.650	4.950	126	1-531138-0
4.000	40	4.124	4.225	4.550	4.850	123	-9
7.900	79	8.024	8.125	8.450	8.750	240	-8
6.900	69	7.024	7.125	7.450	7.750	210	-7
5.900	59	6.024	6.125	6.450	6.750	180	-6
5.400	54	5.524	5.625	5.950	6.250	165	-5
4.900	49	5.024	5.125	5.450	5.750	150	-4
3.900	39	4.024	4.125	4.450	4.750	120	-3
3.400	34	3.524	3.625	3.950	4.250	105	-2
2.900	29	3.024	3.125	3.450	3.750	90	531138-1

		F	E	D	C	B	A	NO. OF POSITIONS	PART NO
UNLESS OTHERWISE SPECIFIED DIMENSIONS ARE IN INCHES. TOLERANCES ON: DECIMALS ± .010 ANGLES		CONTRACT NO						AMP AMP INCORPORATED Harrisburg, Pa.	
MATERIAL		DR Debra Kelly 8-6-79						NAME	
FINISH		CHK M. P. Richard Jr. 9/1/79						RECEPTACLE ASSY .100¢, 3 ROW W/ MOUNTING EARS, BOX CONTACT SOLDER TAIL	
		APPD M. P. Richard Jr. 9/1/79						SIZE CODE IDENT NO DRAWING NO	
		APPD M. P. Richard Jr. 9/1/79						C 00779 531138	
		DSGN APPD						REV H	
		OTHER APPD						SCALE 5:1 SHEET 2	

CUSTOMER DRAWING