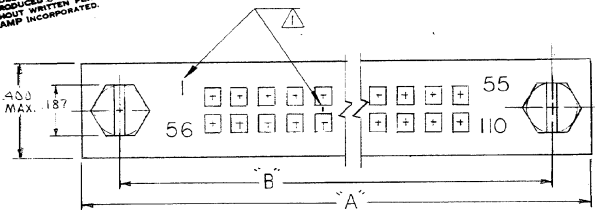


DRAWING MADE IN THIRD ANGLE PROJECTION

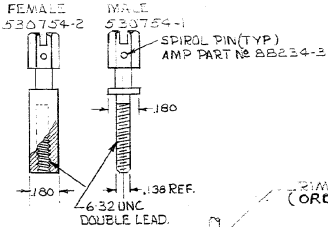
© COPYRIGHT 1977 BY AMP INCORPORATED, HARRISBURG, PA.  
ALL INTERNATIONAL RIGHTS RESERVED. AMP INCORPORATED PRODUCTS  
COVERED BY U. S. AND FOREIGN PATENTS AND/OR PATENTS PENDING.

UNPUBLISHED COPY NOT TO BE  
REPRODUCED FOR PUBLISHED  
WITHOUT WRITTEN PERMISSION  
OF AMP INCORPORATED.

REVISIONS			
P	ZONE/LTR	DESCRIPTION	DATE APPROVED
F		ECO-08-020831	PY 10-08 BW

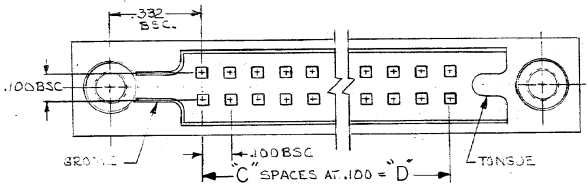
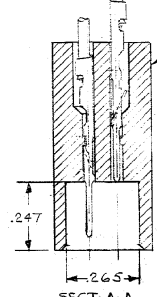
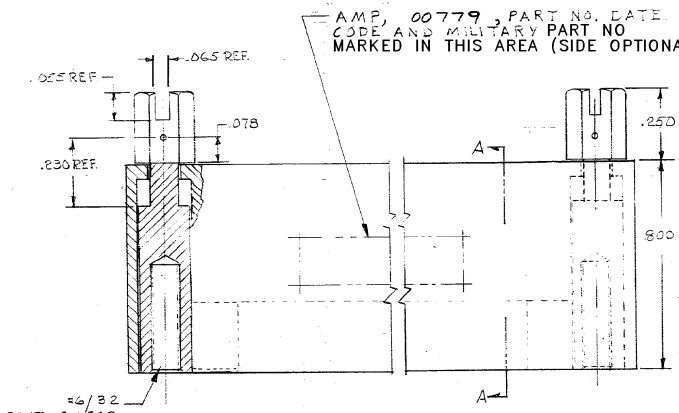


REPLACEMENT JACKSCREEN KIT



PIMP-SNAP CONTACT P/N 530750#22#26 AWG.  
(ORDERED SEPARATELY)

HOUSING MAT'L: GLASS FILLED POLYESTER  
COLOR: BLUE



- NUMBERS (SEE TABLE SHEET 2) AND LINES INDICATING EVERY 3 CAVITIES MARKED WHERE SHOWN
  - MEETS PERFORMANCE REQUIREMENTS MIL-C-55302
  - MATES WITH EXTERNAL KEY TYPE RECEPTACLE ASSY. 1000 SERIES, WITH JSC MOUNTING HARDWARE P/N 532484 (2 REQ'D) TO ENGAGE JACKSCREWS.
- △ OBS PART NO.

UNLESS OTHERWISE SPECIFIED DIMENSIONS ARE IN INCHES.		CONTRACT NO		PART NO	
TOLERANCES ON: DECIMALS ±.010 ANGLES ±		DR	4-1576	AMP INCORPORATED Harrisburg, Pa.	
MATERIAL		CHK	4-1576	NAME	
SEE CALL-OUT		APPD	4-1576	PIN HEADER HOUSING ASSEMBLY, CRIMP-SNAP BOX PIN CONTACTS.	
FINISH		APPD	4-1576	SIZE	CODE IDENT NO DRAWING NO
SEE CALL-OUT		DSGN APPD		C	00779 530752
		OTHER APPD		SCALE	1-1 SHEET 1 of 2

CUSTOMER DRAWING

AMP 1471-6 (7-73)

530752

DRAWING MADE IN THIRD ANGLE PROJECTION

© COPYRIGHT 1977 BY AMP INCORPORATED, HARRISBURG, PA.  
 ALL INTERNATIONAL RIGHTS RESERVED. AMP INCORPORATED PRODUCTS  
 COVERED BY U. S. AND FOREIGN PATENTS AND/OR PATENTS PENDING.

UNPUBLISHED COPY NOT TO BE REPRODUCED OR TRANSMITTED IN ANY FORM OR BY ANY MEANS WITHOUT WRITTEN PERMISSION OF AMP INCORPORATED.

LOC DIST		REVISONS	
ZONE	LTR	DESCRIPTION	DATE APPROVED
SEE SHEET 1			

M55302/113-87	M	M	1/32	55/110	5.400	54	6.065	6.355	5-530752-8
-84	M	F	↓	↓	↓	↓	↓	↓	3-
-85	F	M	↓	↓	↓	↓	↓	↓	5-
-84	F	F	1/32	55/110	5.400	54	6.065	6.355	5-
-79	M	M	1/31	55/100	4.900	49	5.565	5.855	5-
-78	M	F	↓	↓	↓	↓	↓	↓	3-
-77	F	M	↓	↓	↓	↓	↓	↓	3-
-76	F	F	1/31	55/100	4.900	49	5.565	5.855	2-
-71	M	M	1/46	45/90	4.400	44	5.065	5.355	2-
-70	M	F	↓	↓	↓	↓	↓	↓	2-
-69	F	M	↓	↓	↓	↓	↓	↓	2-
-68	F	F	1/46	45/90	4.400	44	5.065	5.355	2-
-63	M	M	1/41	47/80	3.900	39	4.565	4.855	2-
-62	M	F	↓	↓	↓	↓	↓	↓	2-
-61	F	M	↓	↓	↓	↓	↓	↓	2-
-60	F	F	1/41	49/80	3.900	39	4.565	4.855	2-
-55	M	M	1/31	37/60	2.900	29	3.565	3.855	2-
-54	M	F	↓	↓	↓	↓	↓	↓	1-
-53	F	M	↓	↓	↓	↓	↓	↓	1-
-52	F	F	1/31	39/60	2.900	29	3.565	3.855	1-
-47	M	M	1/26	25/50	2.400	24	3.065	3.355	1-
-46	M	F	↓	↓	↓	↓	↓	↓	1-
-45	F	M	↓	↓	↓	↓	↓	↓	1-
-44	F	F	1/26	25/50	2.400	24	3.065	3.355	1-
-39	M	M	1/21	29/40	1.900	19	2.565	2.855	1-
-38	M	F	↓	↓	↓	↓	↓	↓	1-
-37	F	M	↓	↓	↓	↓	↓	↓	1-
-36	F	F	1/21	20/40	1.900	19	2.565	2.855	1-
-31	M	M	1/16	15/30	1.400	14	2.065	2.355	1-
-30	M	F	↓	↓	↓	↓	↓	↓	1-
-29	F	M	↓	↓	↓	↓	↓	↓	1-
-28	F	F	1/16	15/30	1.400	14	2.065	2.355	1-
-10	M	M	1/36	25/70	3.400	34	4.065	4.355	1-
-09	M	F	↓	↓	↓	↓	↓	↓	1-
-08	F	M	↓	↓	↓	↓	↓	↓	1-
M55302/113-07	F	F	1/36	37/70	3.400	34	4.065	4.355	530752-1

UNLESS OTHERWISE SPECIFIED DIMENSIONS ARE IN INCHES. TOLERANCES ON: DECIMALS ± ANGLES ±		CONTRACT NO 7-11-77	AMP INCORPORATED Harrisburg, Pa.	
MATERIAL	DR CHK M. Smith	APPD R. Williams 7-10-77	NAME PIN HEADER HOUSING ASSY. FOR CRIMP-SNAP BOX PIN CONTACTS.	
FINISH	DSGN APPD K. Schuman 7-10-77	OTHER APPD	SIZE CODE IDENT NODRAWING NO C 00779 530752	REV F
SCALE			SHEET 2 OF 2	

CUSTOMER DRAWING