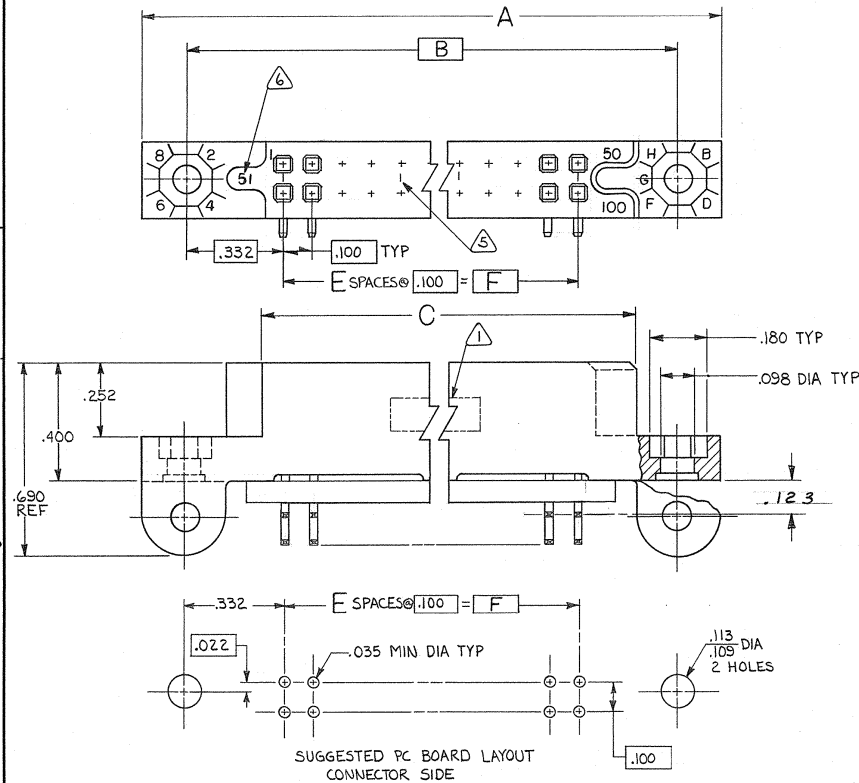


DRAWING MADE IN THIRD ANGLE PROJECTION

© COPYRIGHT 19 BY AMP INCORPORATED, HARRISBURG, PA.  
ALL INTERNATIONAL RIGHTS RESERVED. AMP INCORPORATED PRODUCTS  
COVERED BY U. S. AND FOREIGN PATENTS AND/OR PATENTS PENDING.



REVISIONS						
P	F	ZONE	LTR	DESCRIPTION	DATE	APPROVED
				O WAS 5085-747		
				A REVISED 7801 MS	8-82	WHP
				A1 REV PER ECN 8619 20P	8-83	EAH
				B REV PER ECN AB-0535	1-85	EAH
				B1 REVISED ECN AB-1096	9-85	EAH
				C REVISED PER AB-1674	11-86	EAH
				D REV PER DF-0089 & DF-0174	11-88	JLB
				E REV PER ECN DF-1546	NF 4-28-89	D.S.
				F REACT-S PER DF-3250	T.W. 4-23-90	B.H.
				G REV 0600-5631-96	TT 8-98	RAM
				H REV PER 0600-6466-97	TT 10-98	RAM
				K REV PER ECN 05-013289	11-05	PY
				L REV PER DH14-0208-05	1-06	PY

- △ AMP, PART NUMBER, AND DATE CODE INK STAMPED WHITE IN THIS AREA.
- △ HOUSING MATERIAL-DIALLYL PHTHALATE, COLOR-BLUE.
- △ CONTACT MATERIAL-BERYLLIUM COPPER OR COPPER-NICKEL-SILICONE
- △ CONTACT FINISH-.000030 GOLD WITH TIN-LEAD PLATED TAILS.
- △ LINES INDICATING EVERY FIVE CAVITIES INK STAMPED WHITE THIS SURFACE.
- △ CAVITY IDENTIFICATION NUMBERS INK STAMPED WHITE.
- △ THE TWO ROWS OF CONTACT TAILS WILL NOT BE OF EQUAL LENGTH.
- △ A TRANSPARENT MYLAR STRIP IS PLACED ON THE RIGHT-ANGLE TAILS TO IMPROVE CONTACT ALIGNMENT AND STABILITY.
- △ CONTACT FINISH-.000030 GOLD WITH TIN PLATED TAILS

UNLESS OTHERWISE SPECIFIED DIMENSIONS ARE IN INCHES. TOLERANCES ON: DECIMALS ±.010 ANGLES		CONTRACT NO DR 12-11-81 CHK D.L. Kelly M. Smith 12-18-81 APP'D W. Pritchard Jr 12/29/81 E.T. Peterson 12-28-81	PART NO
MATERIAL △ 3	FINISH △ 3	AMP INCORPORATED Harrisburg, Pa.	NAME RECEPTACLE ASSEMBLY, .100x.100 GRID, RIGHT ANGLE, SNAP IN BOX CONTACTS
DSGN APPD		SIZE C	CODE IDENT NO 00779
OTHER APPD		DRAWING NO 532469	
SCALE 4:1		SHEET 1 OF 2	

AMP 1471-6 REV 12-78

CUSTOMER DRAWING

532469

DRAWING MADE IN THIRD ANGLE PROJECTION

THIS DRAWING IS UNPUBLISHED. RELEASED FOR PUBLICATION . 19 .

© COPYRIGHT 19 BY AMP INCORPORATED, HARRISBURG, PA. ALL INTERNATIONAL RIGHTS RESERVED. AMP PRODUCTS MAY BE COVERED BY U.S. AND FOREIGN PATENTS AND/OR PATENTS PENDING.

LOC DEF		DIST FO	
REVISIONS			
P	F	ZONE	LTR
DESCRIPTION			DATE APPROVED
L SEE SHEET 1			

	△	4.900	49	5.165	5.565	5.855	100	5-532469-9	
	△	4.400	44	4.665	5.065	5.355	90	5-532469-3	
OBSOLETE	△	6.900	69	7.165	7.565	7.855	140	1-532469-3	
	△	6.600	66	6.865	7.265	7.555	134	1-	-2
OBSOLETE	△	6.400	64	6.665	7.065	7.355	130	1-	-1
		5.400	54	5.665	6.065	6.355	110	1-	-0
		4.900	49	5.165	5.565	5.855	100		-9
OBSOLETE		3.900	39	4.165	4.565	4.855	80		-8
OBSOLETE		3.400	34	3.665	4.065	4.355	70		-7
		1.900	19	2.165	2.565	2.855	40		-6
		1.400	14	1.665	2.065	2.355	30		-5
		5.900	59	6.165	6.565	6.855	120		-4
		4.400	44	4.665	5.065	5.355	90		-3
		2.900	29	3.165	3.565	3.855	60		-2
OBSOLETE	△	2.400	24	2.665	3.065	3.355	50	532469-1	

UNLESS OTHERWISE SPECIFIED DIMENSIONS ARE IN INCHES. TOLERANCES ON: DECIMALS ±.010 ANGLES ±	CONTRACT NO		AMP   AMP INCORPORATED Harrisburg, Pa. 17105	
	DR D. Evans 12-17-81	NAME RECEPTACLE ASS Y, 100 X 100 GRID, RIGHT ANGLE, SNAP IN BOX CONTACT		
MATERIAL	CHK M. Smith 12-18-81	APPR W. P. [Signature] 12/28/81	APPR E. T. [Signature] 12-28-81	
FINISH	DSGN APPD	SIZE C	FSCM NO 00779	DRAWING NO 532469
	OTHER APPD	SCALE 4:1	SHEET 2 of 2	