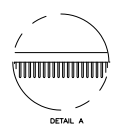
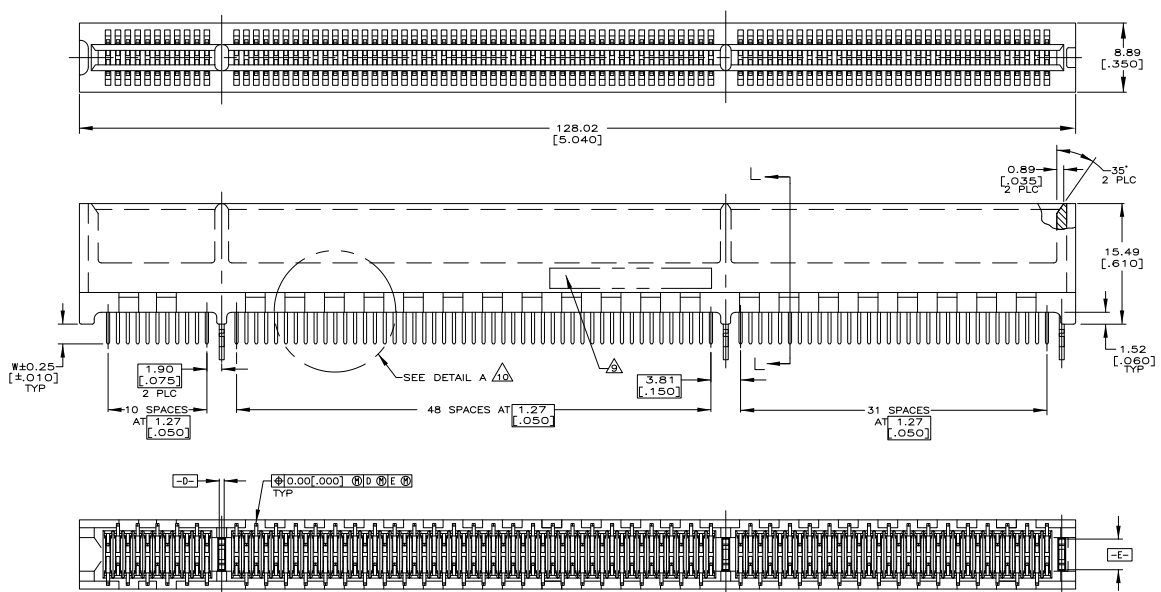


REV	DATE	DESCRIPTION	BY	CHK
AA	00			
B2		REVISED PER EDD-11-005033	24MM11	RK HMR



- △ HOUSING: HIGH TEMPERATURE THERMOPLASTIC. COLOR - NATURAL. SEE SHEET 2 FOR HOLE PATTERN
- △ CONTACT: PHOSPHOR BRONZE.
- △ METAL HOLD DOWN: BRASS
- △ CONTACT FINISH: .001269[.000050] MIN NICKEL ALL OVER. GOLD FLASH OVER NICKEL IN CONTACT AREA. .002537[.000100] MIN MATTE TIN OVER NICKEL ON SOLDER TAILS.
- △ CONTACT FINISH: .001269[.000050] MIN NICKEL ALL OVER. .000375[.000015] GOLD OVER NICKEL IN CONTACT AREA. .002537[.000100] MIN MATTE TIN OVER NICKEL ON SOLDER TAILS.
- △ CONTACT FINISH: .001269[.000050] MIN NICKEL ALL OVER. .000757[.000030] GOLD OVER NICKEL IN CONTACT AREA. .002537[.000100] MIN MATTE TIN OVER NICKEL ON SOLDER TAILS.
- △ DISTANCE FROM CONTACT POINT TO BOTTOM OF CARD SLOT.
- △ METAL HOLD DOWN FINISH: .001269[.000050] MIN NICKEL ALL OVER. .003809[.000150] MIN MATTE TIN ALL OVER.
- △ AMP PART NUMBER, DATE CODE AND CSA LOGO MARKED IN APPROXIMATE LOCATION SHOWN.
- △ CORED OR SOLID SIDE WALLS ARE AT DISCRETION OF AMP INCORPORATED.
- △ HOUSING: HIGH TEMPERATURE THERMOPLASTIC. COLOR - GREEN, PANTONE COLORS 355C OR 365C
- △ HOUSING: HIGH TEMPERATURE THERMOPLASTIC. COLOR: BLACK
- △ OBSOLETE PARTS: OBSOLETE CIS STREAMLINING PER D.RENAUD/D.SINISI

REV	DATE	DESCRIPTION	BY	CHK
△	2.54	.100	△	2-5145168-9
△	3.18	.125	△	2-5145168-6
△	3.56	.140	△	1-5145168-3
△	3.18	.125	△	5145168-B
△	2.54	.100	△	5145168-4
△	2.54	.100	△	5145168-2
△	2.54	.100	△	5145168-1

MISC MATL: W FINISH: PART NUMBER

THIS DRAWING IS A CONTROLLED DOCUMENT. DATE: 22 JUN 93

FRONTMOUNT DATE: 22 JUN 93

REVISIONS: 108-14034

114-26012

DATE: 114-26012

SIZE: 100779

CONNECTIONS: 92 DUAL POSITION, 1.27 (0.050) SERIES

CONNECTOR ASSEMBLY, 92 DUAL POSITION, 1.27 (0.050) SERIES

CUSTOMER DRAWING

