

REVISIONS			DATE	APPROVED
LTR	DESCRIPTION			
K1	REVISED PER ECO-11-005139		29MAR11	HWR

IF THIS DOCUMENT IS PRINTED IT BECOMES UNCONTROLLED.  
CHECK FOR THE LATEST REVISION.

DK-621-14XX-XX CONNECTORS ARE NOT AVAILABLE FOR NEW ORDERS. ORDER EQUIVALENT DK-621-04XX-XX CONNECTOR.

PART NUMBER	CONNECTOR	CONTACT	CONNECTOR INTERFACE	COLOR CODE	PART NUMBER	CONNECTOR	CONTACT	CONNECTOR INTERFACE	COLOR CODE
DK-621-0433	PLUG	—	A	RED	DK-621-1433	PLUG	—	A	RED
DK-621-0433-1P	PLUG	PIN	A	RED	DK-621-1433-1P	PLUG	PIN	A	RED
DK-621-0433-1UP	PLUG	PIN	A	RED	DK-621-1433-1S	PLUG	—	A	RED
DK-621-0433-1S	PLUG	SOCKET	A	RED	DK-621-1433-1S	PLUG	SOCKET	A	RED
DK-621-0433-1US	PLUG	SOCKET	A	RED	DK-621-1434	JACK	—	A	RED
DK-621-0434	JACK	—	A	RED	DK-621-1434-1P	JACK	PIN	A	RED
DK-621-0434-1P	JACK	PIN	A	RED	DK-621-1434-1S	JACK	SOCKET	A	RED
DK-621-0434-1UP	JACK	PIN	A	RED	DK-621-1435	PLUG	—	B	WHITE
DK-621-0434-1S	JACK	SOCKET	A	RED	DK-621-1435-2P	PLUG	PIN	B	WHITE
DK-621-0434-1US	JACK	SOCKET	A	RED	DK-621-1435-2S	PLUG	SOCKET	B	WHITE
DK-621-0435	PLUG	—	B	WHITE	DK-621-1436	JACK	—	B	WHITE
DK-621-0435-2P	PLUG	PIN	B	WHITE	DK-621-1436-2P	JACK	PIN	B	WHITE
DK-621-0435-2UP	PLUG	PIN	B	WHITE	DK-621-1436-2S	JACK	SOCKET	B	WHITE
DK-621-0435-2S	PLUG	SOCKET	B	WHITE	DK-621-1437	PLUG	—	C	GREEN
DK-621-0435-2US	PLUG	SOCKET	B	WHITE	DK-621-1437-3P	PLUG	PIN	C	GREEN
DK-621-0436	JACK	—	B	WHITE	DK-621-1437-3S	PLUG	SOCKET	C	GREEN
DK-621-0436-2P	JACK	PIN	B	WHITE	DK-621-1438	JACK	—	C	GREEN
DK-621-0436-2UP	JACK	PIN	B	WHITE	DK-621-1438-3P	JACK	PIN	C	GREEN
DK-621-0436-2S	JACK	SOCKET	B	WHITE	DK-621-1438-3S	JACK	SOCKET	C	GREEN
DK-621-0436-2US	JACK	SOCKET	B	WHITE	DK-621-1439	PLUG	—	D	N/A
DK-621-0437	PLUG	—	C	GREEN	DK-621-1439-4P	PLUG	PIN	D	N/A
DK-621-0437-3P	PLUG	PIN	C	GREEN	DK-621-1439-4S	PLUG	SOCKET	D	N/A
DK-621-0437-3UP	PLUG	PIN	C	GREEN	DK-621-1440	JACK	—	D	N/A
DK-621-0437-3S	PLUG	SOCKET	C	GREEN	DK-621-1440-4P	JACK	PIN	D	N/A
DK-621-0437-3US	PLUG	SOCKET	C	GREEN	DK-621-1440-4S	JACK	SOCKET	D	N/A
DK-621-0438	JACK	—	C	GREEN	DK-621-1438-3P	JACK	PIN	C	GREEN
DK-621-0438-3P	JACK	PIN	C	GREEN	DK-621-1438-3S	JACK	SOCKET	C	GREEN
DK-621-0438-3UP	JACK	PIN	C	GREEN	DK-621-1439-4P	PLUG	—	D	N/A
DK-621-0438-3S	JACK	SOCKET	C	GREEN	DK-621-1439-4S	PLUG	SOCKET	D	N/A
DK-621-0438-3US	JACK	SOCKET	C	GREEN	DK-621-1440	JACK	—	D	N/A
DK-621-0439	PLUG	—	D	N/A	DK-621-1440-4P	JACK	PIN	D	N/A
DK-621-0439-4P	PLUG	PIN	D	N/A	DK-621-1440-4S	JACK	SOCKET	D	N/A
DK-621-0439-4UP	PLUG	PIN	D	N/A					
DK-621-0439-4S	PLUG	SOCKET	D	N/A					
DK-621-0439-4US	PLUG	SOCKET	D	N/A					
DK-621-0440	JACK	—	D	N/A					
DK-621-0440-4P	JACK	PIN	D	N/A					
DK-621-0440-4UP	JACK	PIN	D	N/A					
DK-621-0440-4S	JACK	SOCKET	D	N/A					
DK-621-0440-4US	JACK	SOCKET	D	N/A					

© 2009,2011 Tyco Electronics Corporation, a TE Connectivity Ltd. company All Rights Reserved.

## CUSTOMER DRAWING



TE Connectivity

Roychem Datobus  
300 Constitution Drive  
Menlo Park, CA 94025 U.S.A.

TITLE

KITS FOR DK-621-0433/0440  
TRIAxIAL CONNECTORS

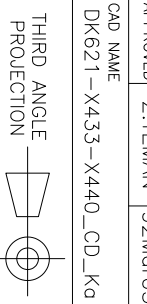
UNLESS OTHERWISE SPECIFIED  
DIMENSIONS ARE IN INCHES  
AND METRIC DIMENSIONS  
ARE IN BRACKETS.

DRAWN	J.B.K.	92Mar03
CHECKED	G.Rostiano	09Mar12
APPROVED	Z.TEMAN	92Mar03

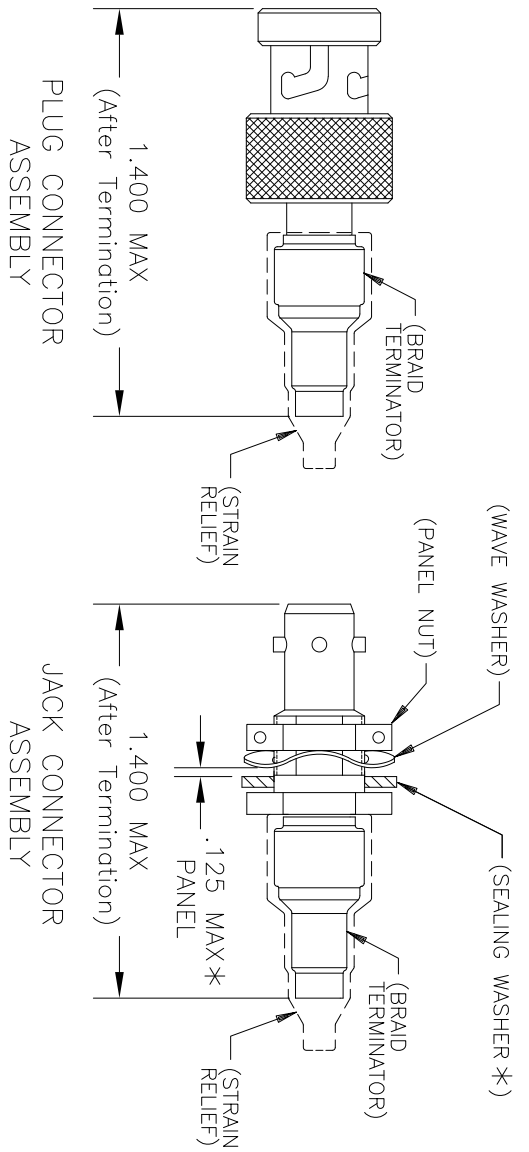
CAD NAME  
DK621-X433-X440\_CD\_Kd

DECIMALS [---mm]  
XXX ± ---  
.XX ± --- [---mm]  
ANGLES ± ---

WEIGHT ---lbs [---g]



SIZE	CODE	IDENT. NO.	DWG. NO.
A	06090	DK-621-X433/X440-XX	
DO NOT SCALE THIS DRAWING			
			SHEET 1 OF 2



NOTES:  
 1.0 REFER TO THE FOLLOWING TE CONNECTIVITY CUSTOMER DRAWINGS (CD) FOR INDIVIDUAL COMPONENT DETAILS:

- D-621-0433/0440 CONNECTOR, TRIAXIAL, BAYONET COUPLED
- D-602-0126 CONTACT, PIN, TWISTED PAIR
- D-602-0127 CONTACT, SOCKET, TWISTED PAIR
- (D-600-0030) BRAID TERMINATOR
- (D-600-0019) STRAIN RELIEF
- (D-600-0053) SEALING WASHER (JACK ONLY)

\* SEALING WASHER MAY BE INSTALLED IF THE PANEL THICKNESS IS LESS THAN 0.093 INCH.

2.0 CONNECTORS ARE QUALIFIED TO RAYCHEM SPECIFICATION D-6025.  
 3.0 TERMINATION PROCEDURE: RAYCHEM ES 61162.

IF THIS DOCUMENT IS PRINTED IT BECOMES UNCONTROLLED.  
 CHECK FOR THE LATEST REVISION.

<b>CUSTOMER DRAWING</b>		<b>STE</b> TE Connectivity		Raychem Databus	
DRAWN J.B.K.	DATE 9/1Apr/03	SIZE CAGE CODE	DWG. NO.	300 Constitution Drive	
CAD FILE		A 06090	DK-621-X433/X440-XX	Menlo Park, CA 94025 U.S.A.	
DK621-X433-X440_CD_Kb		DO NOT SCALE THIS DRAWING		SHEET 2 OF 2	