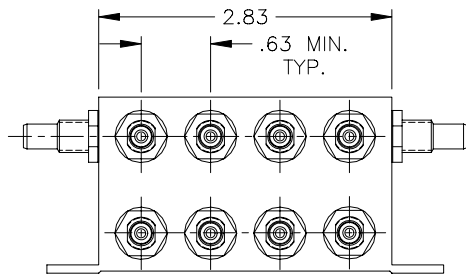
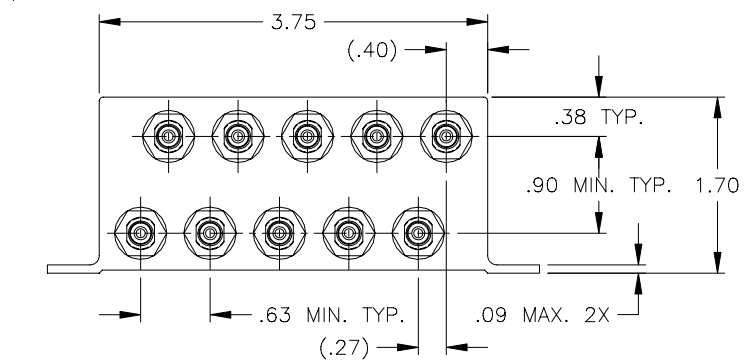
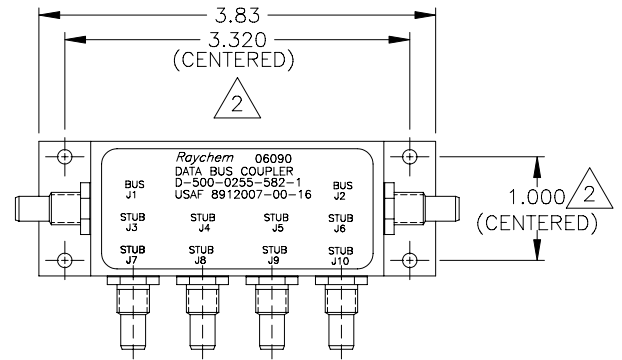
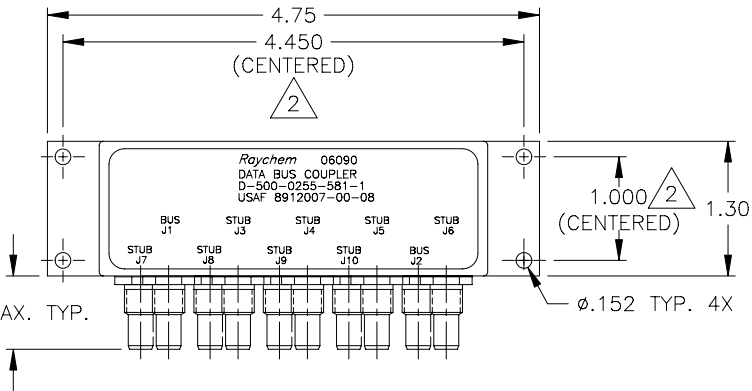


REVISIONS			
LTR	DESCRIPTION	DATE	APPROVED
B	REVISED PER PER DCR NO. T-25169	7/14/00	GMR



FACE MOUNT BUS CONFIGURATION
D-500-0255-581-1

SIDE MOUNT BUS CONFIGURATION
D-500-0255-582-1

SPECIFICATION CONTROL DRAWING

- 3 WEIGHT: D-500-0255-581-1 264 grams MAX.
D-500-0255-582-1 235 grams MAX.
 - 2 HOLE PATTERN MACHINED SYMMETRIC TO MOUNTING FLANGE.
 - 1. ORIENTATION OF CONNECTORS IS APPROXIMATELY AS SHOWN.
- NOTES:

UNLESS OTHERWISE SPECIFIED DIMENSIONS ARE IN INCHES. METRIC DIMENSIONS ARE IN BRACKETS.	DRAWN	J.B.K.	92 FEB 25	Tyco Electronics Corporation 300 Constitution Drive Menlo Park, CA, 94025 U.S.A.		
	CHECKED					
	DECIMALS	.XXX ± .010	[— mm]	TITLE 8 STUB DATA BUS BOX COUPLER WITH THREADED TRIAXIAL CONNECTORS (FACE MOUNT & SIDE MOUNT BUS CONFIGURATION)		
	ANGLES	.XX ± .03	[— mm]			
APPROVED	Z.TEMAN	92 MAR 17	SIZE	CODE IDENT. NO.	DWG. NO.	REV
CAD NAME	T25169A		A	06090	D-500-0255-581/582-1	B
THIRD ANGLE PROJECTION			DO NOT SCALE THIS DRAWING			
WEIGHT	3		SHEET 1 OF 2			

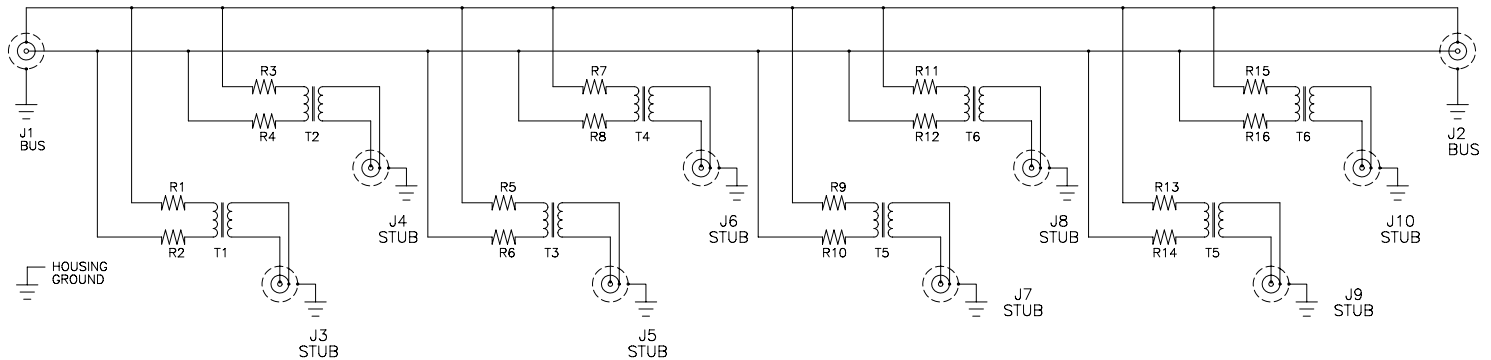
1.0 INTERMATEABILITY

BUS JACKS J1 AND J2	MATING PLUG
DK-621-0412-P (8340711-00-01)	DK-621-0411-S (8340709-00-02)

STUB JACK J3 THRU J10	MATING PLUG
DK-621-0412-S (8340711-00-02)	DK-621-0411-P (8340709-00-01)

2.0 PERFORMANCE

- 2.1 THIS COUPLER IS DESIGNED TO MEET THE APPLICABLE FUNCTIONAL REQUIREMENT OF RAYCHEM SPECIFICATION D-6021 AND USAF 8912007.
- 2.2 THE COUPLER SHALL OPERATE UNDER ANY OF THE ENVIRONMENTAL SERVICE CONDITIONS AS SPECIFIED IN MIL-E-5400, CLASS ∇ UPGRADED TO 125°C CONTINUOUS OPERATION.
- 2.3 ALTITUDE: SEA LEVEL TO 75,000 FEET

SCHEMATIC DIAGRAM

CAD NAME: T25169B	DRAWN J.B.K.	DATE 92 FEB 25	SIZE A	CODE IDENT. NO. 06090	DWG. NO. D-500-0255-581/582-1	REV B
	ISSUED	DATE	DO NOT SCALE THIS DRAWING		SHEET 2 OF 2	