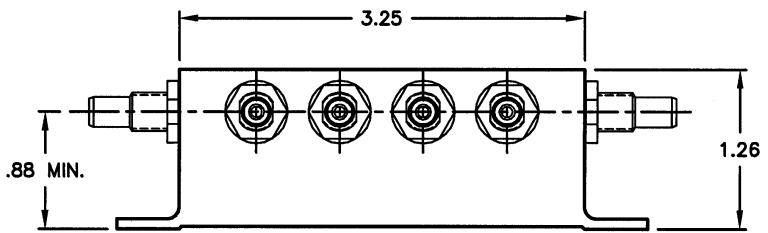
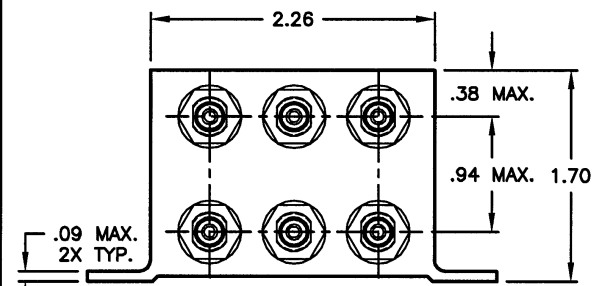
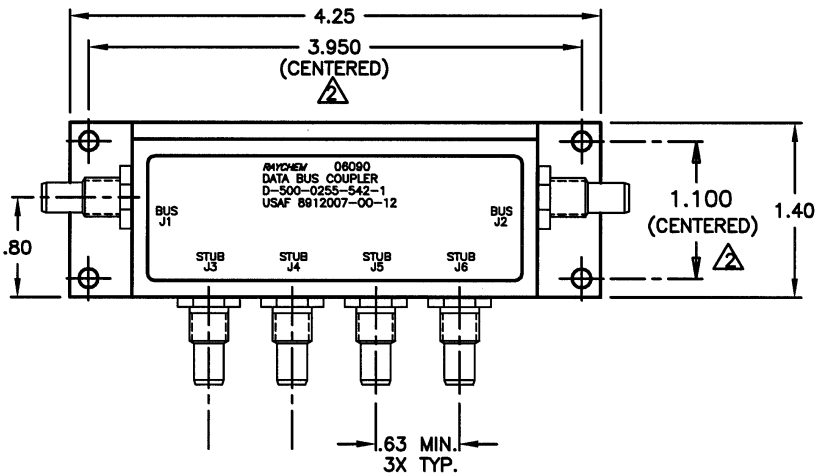
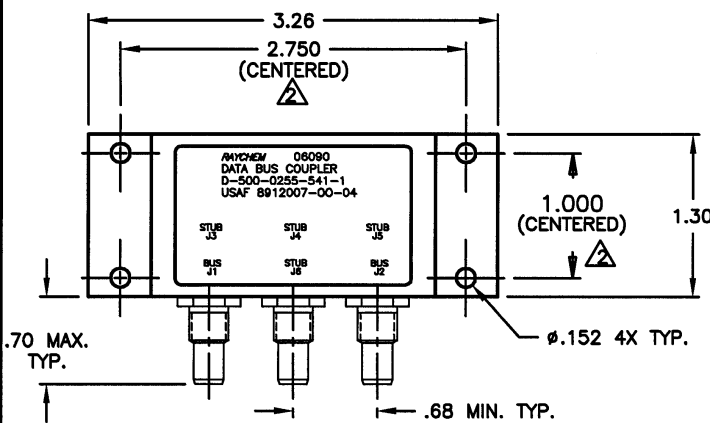


REVISIONS			
LTR	DESCRIPTION	DATE	APPROVED
N/A	INITIAL RELEASE PER ECNF T-10983	92 JAN 15	Z. TEMAN
A	REVISED PER ECNF T-20120	95 JUL 7	Z. TEMAN



FACE MOUNT BUS CONFIGURATION
D-500-0255-541-1

SIDE MOUNT BUS CONFIGURATION
D-500-0255-542-1

SPECIFICATION CONTROL DRAWING

- ③ WEIGHT: D-500-0255-541-1 150 grams MAX.
D-500-0255-542-1 170 grams MAX.
- ⚠ HOLE PATTERN MACHINED SYMMETRIC TO MOUNTING FLANGE.
- 1. ORIENTATION OF CONNECTORS IS APPROXIMATELY AS SHOWN.

NOTES:

UNLESS OTHERWISE SPECIFIED DIMENSIONS ARE IN INCHES. METRIC DIMENSIONS ARE IN BRACKETS.	DRAWN	J.B.K.	91 NOV 4	tyco <small>Tyco Electronics Corporation 200 Constitutional Drive Menlo Park, CA 94025 USA</small> Raychem
	CHECKED			
	APPROVED			
	APPROVED	Z. TEMAN	92 JAN 15	
DECIMALS .XXX ± .010 [— mm] .XX ± .03 [— mm]	CAD NAME	009153-1		TITLE 4 STUB DATA BUS BOX COUPLER WITH THREADED TRIAXIAL CONNECTORS
ANGLES .X ± —	THIRD ANGLE PROJECTION			SIZE A
WEIGHT	③		CODE IDENT. NO. 06090	DRG. NO. D-500-0255-541/542-1
			DO NOT SCALE THIS DRAWING	REV A
			SHEET 1 OF 2	

ORIGINAL COPY

1.0 INTERMATEABILITY

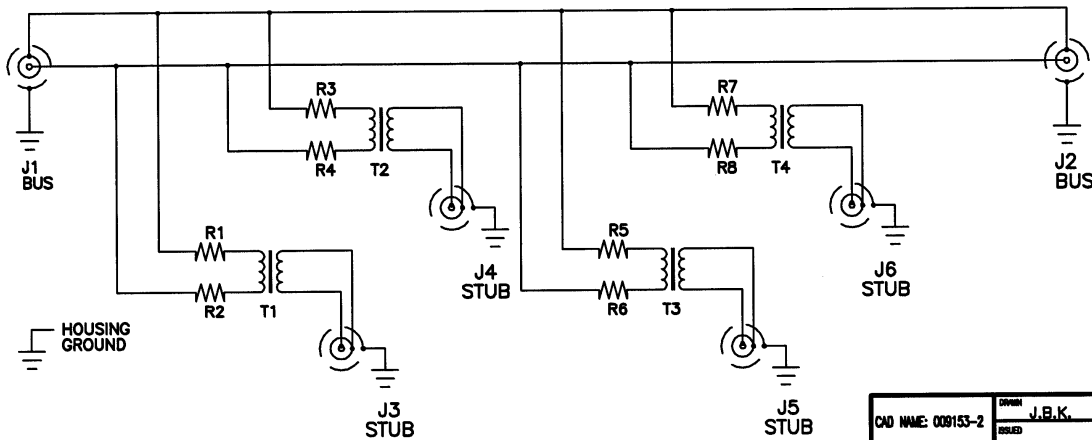
BUS JACKS J1 AND J2	MATING PLUG
DK-621-0412-P (8340711-00-01)	DK-621-0411-S (8340709-00-02)

STUB JACK J3, J4, J5 & J6	MATING PLUG
DK-621-0412-S (8340711-00-02)	DK-621-0411-P (8340709-00-01)

2.0 PERFORMANCE

- 2.1 THIS COUPLER IS DESIGNED TO MEET THE APPLICABLE FUNCTIONAL REQUIREMENT OF RAYCHEM SPECIFICATION D-6021 AND USAF 8912007.
- 2.2 THE COUPLER SHALL OPERATE UNDER ANY OF THE ENVIRONMENTAL SERVICE CONDITIONS AS SPECIFIED IN MIL-E-5400, CLASS ∇ UPGRADED TO 125°C CONTINUOUS OPERATION.
- 2.3 ALTITUDE: SEA LEVEL TO 75,000 FEET

SCHEMATIC DIAGRAM



CAD NAME: 009153-2	DESIGN: J.B.K.	DATE: 91 NOV 5	SIZE: A	CODE IDENT. NO.: 06090	DWG. NO.: D-500-0255-541/542-1
	ISSUED:	DATE:	DO NOT SCALE THIS DRAWING		SHEET 2 OF 2