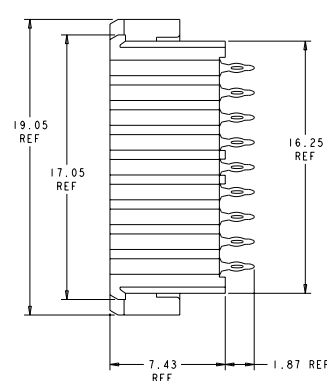
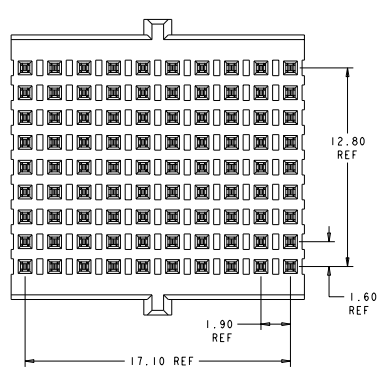
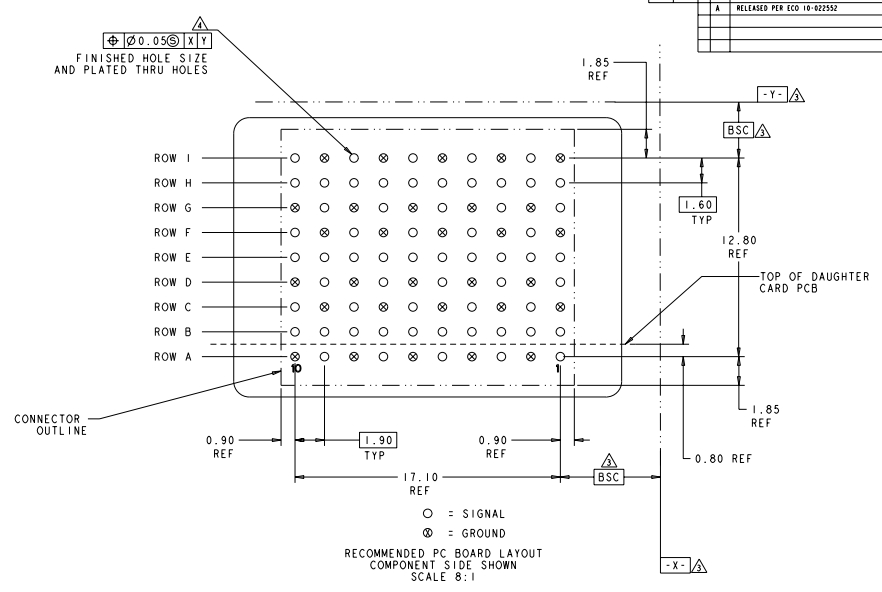
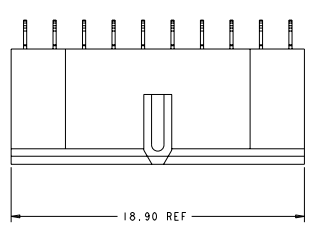


REVISIONS			
REV	DATE	DESCRIPTION	BY
A		RELEASED PER ECO 10-022552	



- △ MATERIAL: CONTACT - COPPER ALLOY HOUSING - LCP, COLOR - BLACK
- △ FINISH: MATING AREA: 1.27μm MIN GOLD OVER 3.81μm MIN NICKEL COMPLIANT PIN AREA: 0.5μm MIN SnPb OVER 1.27μm MIN NICKEL
- △ DATUMS AND BASIC DIMENSIONS ESTABLISHED BY CUSTOMER.
- △ REFERENCE APPLICATION SPEC 114-13267 FOR RECOMMENDED PLATING THRU HOLE DIAMETER AND PLATING THICKNESSES.

THIS PRODUCT HAS NOT COMPLETED VALIDATION TESTING

DATE: 08/11/2009		BY: PFC ELECTRONICS COMPANY	
REV: A	DATE: 08/11/2009	DESCRIPTION: For this 2d, 10-COLUMN, 3-PAIR, VERTICAL CENTER MODULE ASSEMBLY	BY: PFC ELECTRONICS COMPANY
REV: A	DATE: 08/11/2009	DESCRIPTION: For this 2d, 10-COLUMN, 3-PAIR, VERTICAL CENTER MODULE ASSEMBLY	BY: PFC ELECTRONICS COMPANY
REV: A	DATE: 08/11/2009	DESCRIPTION: For this 2d, 10-COLUMN, 3-PAIR, VERTICAL CENTER MODULE ASSEMBLY	BY: PFC ELECTRONICS COMPANY

2000896-1 PART NUMBER