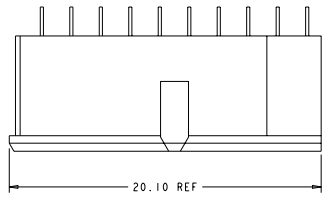
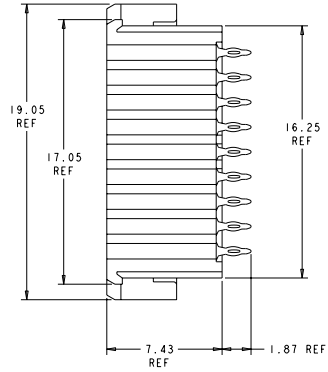
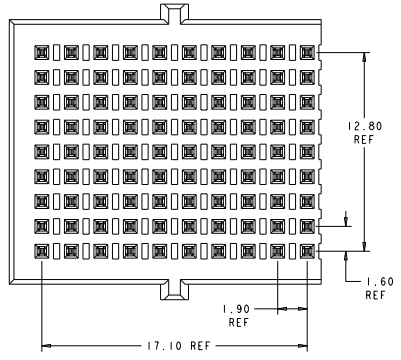


REVISONS		DATE	BY	APP
1	PROPOSED	21/06/2022	DCB	-
2	NAME CHANGE	1/08/21	DCB	MM
3	ADDED PLATING DESCRIPTION	08/08/21	DCB	-
4	ADDED RECOMMENDED BOARD LAYOUT 2	04/08/21	AT	AT
5	ADDED WEIGHT TO TITLE BLOCK	08/07/21	DCB	-
6	REMOVED PRELIMINARY STAMP	02/02/21	DCB	-



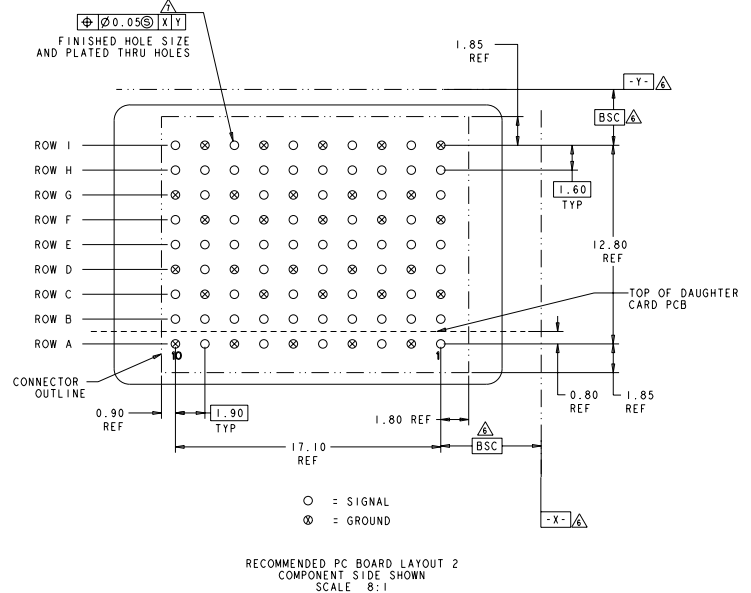
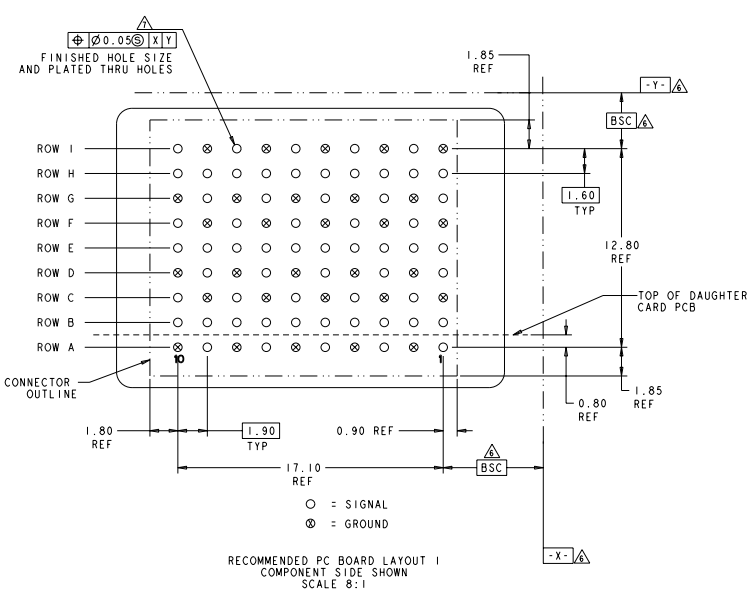
- △ MATERIAL:
CONTACT - COPPER ALLOY
HOUSING - LCP, COLOR - BLACK
- △ FINISH:
MATING AREA: 1.27µm MIN GOLD OVER
1.25µm MIN NICKEL
- △ FINISH:
COMPLIANT PIN AREA: 0.38µm MIN BRIGHT TIN LEAD
OVER 1.27µm MIN NICKEL
- △ FINISH:
COMPLIANT PIN AREA: 0.38µm MIN MATTE TIN
OVER 1.27µm MIN NICKEL
- △ FINISH:
COMPLIANT PIN AREA: 0.38µm MIN GOLD
OVER 1.27µm MIN NICKEL
- △ DATUMS AND BASIC DIMENSIONS ESTABLISHED BY CUSTOMER.
- △ REFERENCE APPLICATION SPEC 114-13267 FOR RECOMMENDED
PLATING THRU HOLE DIAMETER AND PLATING THICKNESS.



△	2000895-3
△	2000895-2
△	2000895-1
FINISH	PART NUMBER

DATE: 24 JUN 2025 BY: ALKAC FOR: ISANG		Tech Electronics Harrisburg, PA 17105-3600	
PART: 100-2489 DESCRIPTION: VERTICAL END MODULE ASSEMBLY		For this 2d, 10-COLUMN, 3-PAIR, VERTICAL END MODULE ASSEMBLY	
WEIGHT: ~3.60 g CUSTOMER DRAWING		STATE: CA PART NUMBER: 00779-2000895 SHEET: 1 OF 2	

REVISED		REVISIONS			
NO.	DATE	DESCRIPTION	BY	CHK	APP
1		SEE SHEET 1			



DATE: 06/24/2005	BY: TPA ELECTRONICS COMPANY	ALL RIGHTS RESERVED	DATE: 06/24/2005	BY: TPA ELECTRONICS COMPANY	ALL RIGHTS RESERVED
DESIGNER: mm	DATE: 06/24/2005	BY: TPA ELECTRONICS COMPANY	DATE: 06/24/2005	BY: TPA ELECTRONICS COMPANY	ALL RIGHTS RESERVED
PROJECT: 100-2409	DESCRIPTION: VERTICAL END MODULE ASSEMBLY	DATE: 06/24/2005	BY: TPA ELECTRONICS COMPANY	ALL RIGHTS RESERVED	DATE: 06/24/2005
SCALE: 8:1	CUSTOMER DRAWING	100-2409	100-2409	100-2409	100-2409