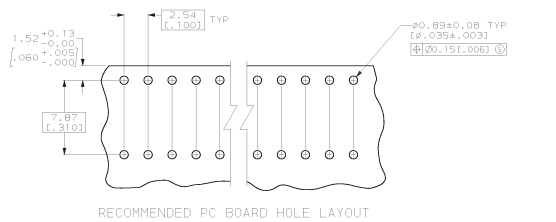
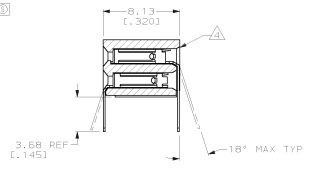
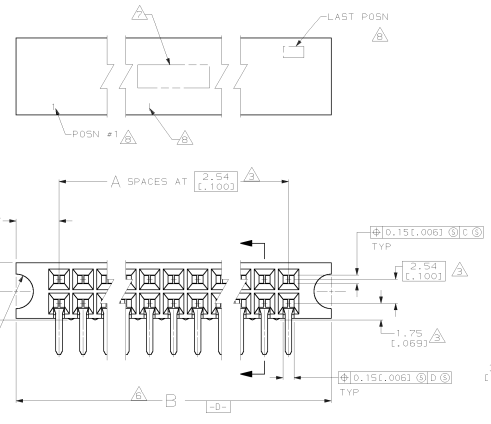


DRAWING MADE IN THIRD ANGLE PROJECTION
 THIRD ANGLE PROJECTION
 © COPYRIGHT 19 BY AMP INCORPORATED. ALL INTERNATIONAL RIGHTS RESERVED.

| REV | DF | ZO | DATE | DESCRIPTION | DATE | APP |
|-----|----|----|------|----------------------|------|------|
| | | | | REV PER DS3D-0408-00 | 01 | 1-01 |

1. QUALITY CONFORMANCE INSPECTION PER MIL-C-55302 (GROUP A, B & C).
 2. PACKAGED PER MIL-C-55302
- ⚠ THESE DIMENSIONS PERTAIN TO CAVITY CENTERLINES ONLY, NOT TO CONTACT LOCATIONS.
 - ⚠ SLOT OPTIONAL AT INDICATED AREA OF HOUSING.
 - ⚠ CONTACTS, 0.00127 (.00050) GOLD OVER 0.000762 TO 0.00381 (.00030 TO .000150) NICKEL ENTIRE CONTACT.
 - ⚠ TOLERANCE TO CENTER OR RADIUS IS $\pm 0.15 (.006)$, TO END OF BLOCK $\pm 0.51 (.020)$.
 - ⚠ MARK IN APPROXIMATE AREA SHOWN
 EXAMPLE AMP PART NO
 DATE CODE MILITARY PART NUMBER
 - ⚠ CHARACTERS MARKED IN AREA SHOWN, EVERY FIFTH POSITION MARKED WITH A BAR
9. "CSA" LOGO MARKED ON HOUSING.



| MILITARY PART NUMBER | B | A | NO OF POSN | PART NUMBER |
|----------------------|----------------|----|------------|-------------|
| M55302/128-DL2D | 158.95 [6.259] | 59 | 120 | 1-102196-1 |
| M55302/128-DA2D | 133.55 [5.259] | 49 | 100 | 1-102196-0 |
| M55302/128-C62D | 108.15 [4.259] | 39 | 80 | 102196-9 |
| M55302/128-BH2D | 70.05 [2.759] | 24 | 50 | 102196-8 |
| M55302/128-DB2D | 136.08 [5.359] | 50 | 102 | 102196-7 |
| M55302/128-AM2D | 39.57 [1.559] | 12 | 26 | 102196-6 |
| M55302/128-AK2D | 34.49 [1.359] | 10 | 22 | 102196-5 |
| M55302/128-BN2D | 82.75 [3.259] | 29 | 60 | 102196-4 |
| M55302/128-BK2D | 75.13 [2.959] | 26 | 54 | 102196-3 |
| M55302/128-BM2D | 80.21 [3.159] | 28 | 58 | 102196-2 |
| M55302/128-CJ2D | 113.23 [4.459] | 41 | 84 | 102196-1 |

| | | |
|--|--|---|
| DO NOT SCALE PRINT. UNLESS SPECIFIED DIMENSIONS IN mm (INCHES) POLYMERES ON P. 10-24-91 3 P.C. DEC # 0.251.010 NOTES # 1 | DR 5-1-91 J. GALLUCI 86 CHK 10-24-91 R. BRONOFF APPD 10-24-91 R. BRONOFF | AMP Incorporated Harrisburg, PA 17105-9608 |
| MATERIAL: POLYETHYLENE SULFIDE NATURAL CONTACTS, PH BRZ | NAME: ASSEMBLY, HOUSING, MOD 11, DOUBLE ROW, WITH GUIDE PIN EARS, SHORT POINT CONTACTS | |
| FINISH: ⚠ | APPLICATION SPEC: - | SIZE: D 00779 SCALE: 5:1 |
| | | DRAWING NO: 102196 SHEET: 1 OF 1 |

CUSTOMER DRAWING